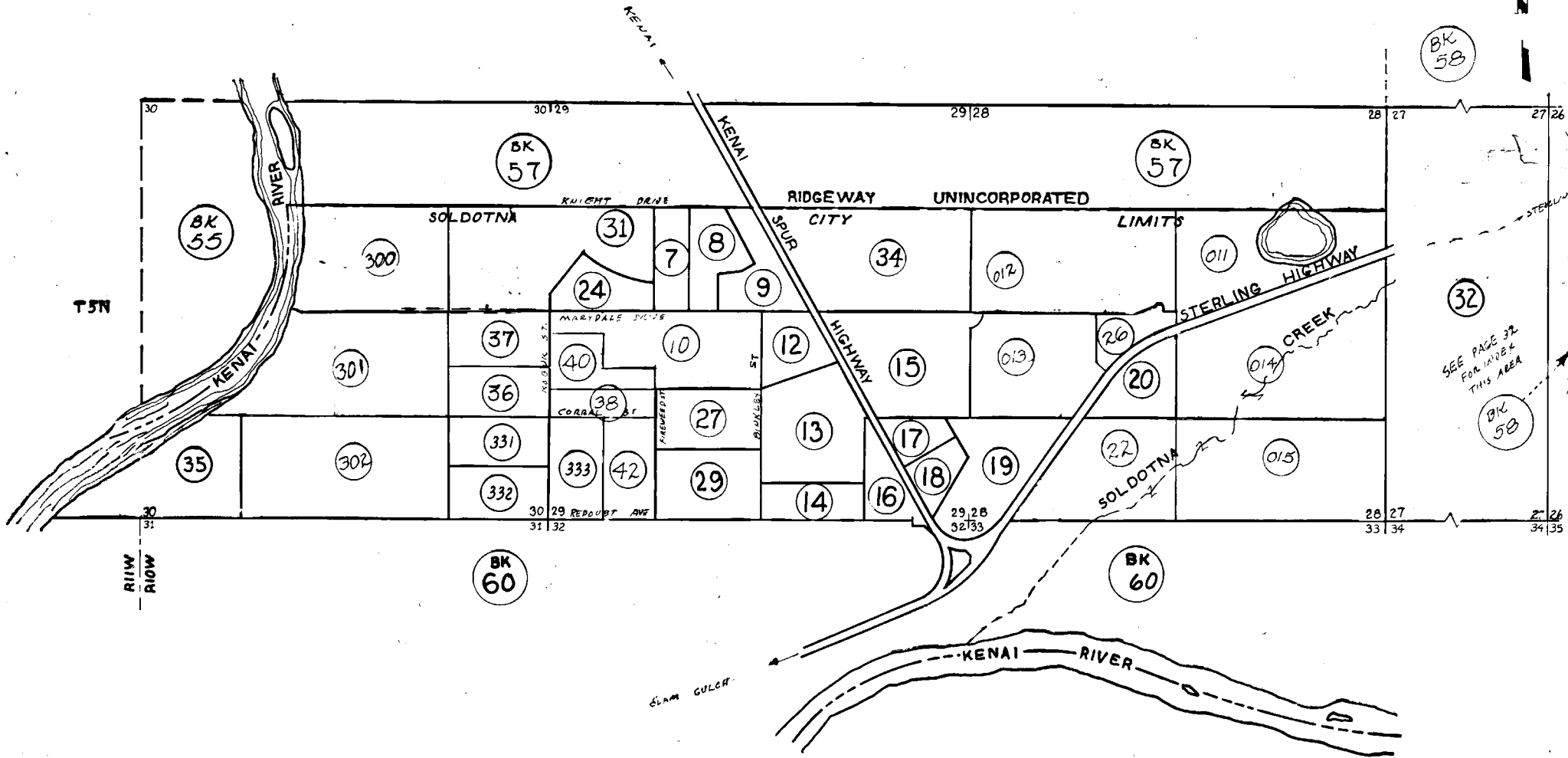


SEC. 27, 28, 29, 30, T5N, R10W, S.B.&M.



**INDEX BOOK 59**  
Kenai Peninsula Borough, Alaska

NOTE - Assessor's Block Numbers Shown in Ellipses  
Assessor's Parcel Numbers Shown in Circles

THIS BOOK BROUGHT TO DATE 6/20/84 DE