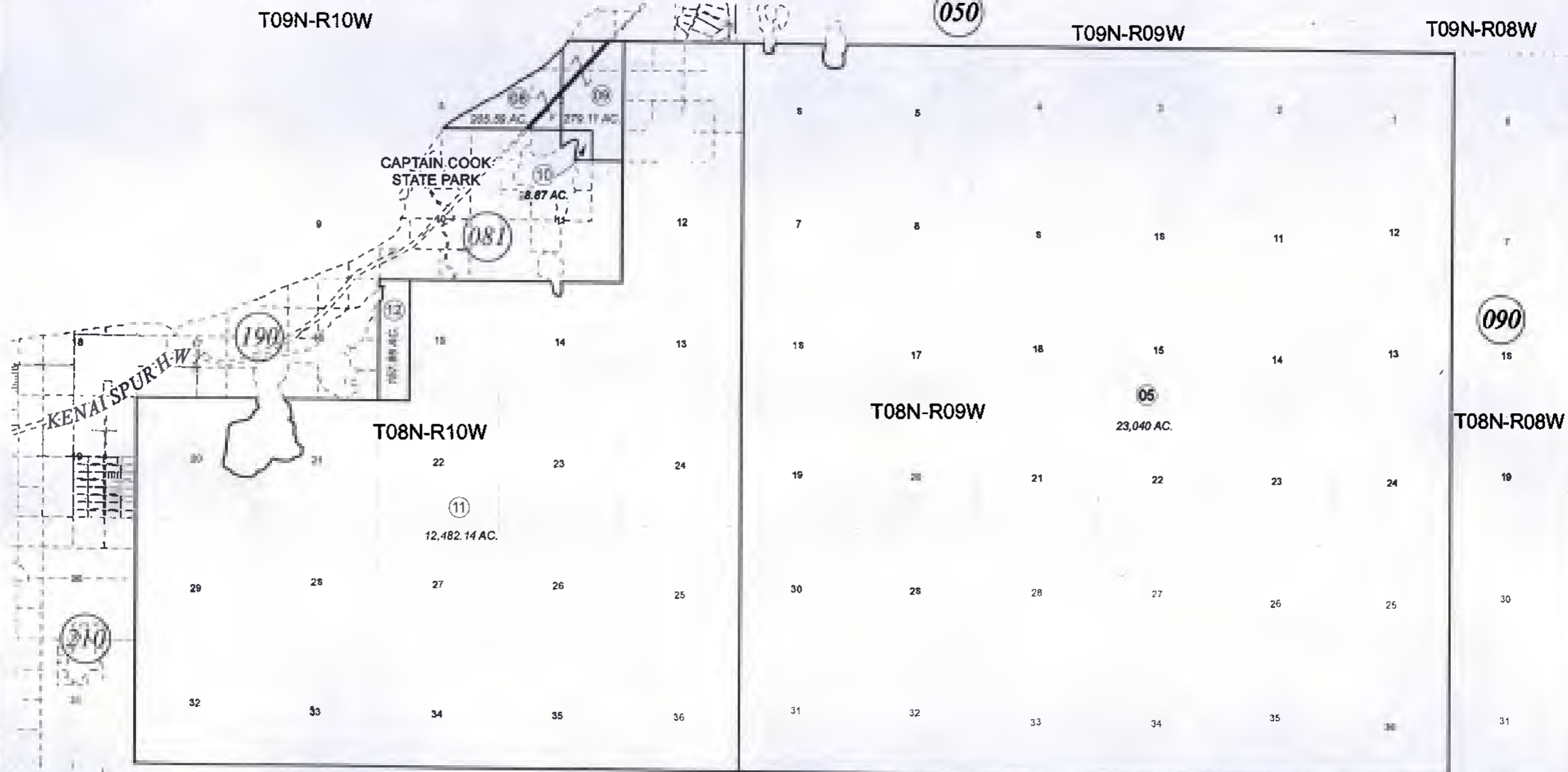


T08N, R09W, R10W, S.M.
T09N-R10W

025-080

T09N-R09W

T09N-R08W



T07N-R10W

T07N-R09W

T07N-R08W

APRIL 14, 2011

| For 2012 assessment roll | | |
|--------------------------|-----|--------|
| Delete | Add | Revise |
| To | | |
| | 12 | 11 |
| (ACREAGE CHANGE) | | |

Assessor's Map
Kenai Peninsula Borough



This map is prepared for Kenai Peninsula Borough Assessing Dept. use only and is not intended for conveyance nor is it a survey.

Note- Assessor's block Numbers Shown in Ellipses
Assessor's Parcel Numbers Shown in Circles