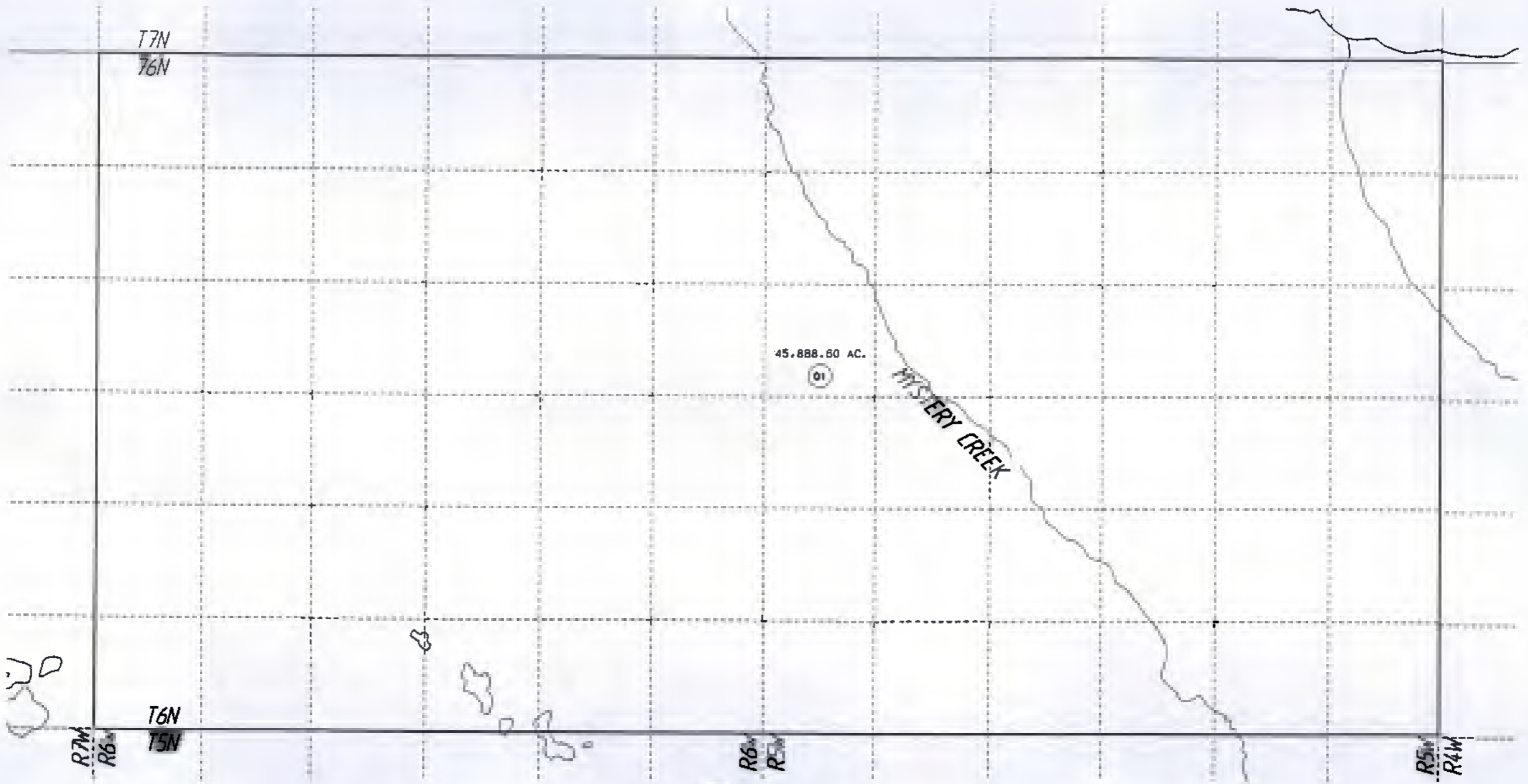


13

5

BK
35



DATE: DEC. 20, 1993

FOR 17 84 ASSESSMENT ROLL
DELETE ADD REVISED

18

NOTE - Assessor's Block Numbers Shown In Ellipses Assessor's Map
 Assessor's Parcel Numbers Shown In Circles Kenai Peninsula Borough

THIS MAP IS PREPARED FOR KENAI PENINSULA BOROUGH ASSESSING DEPT. USE ONLY AND IS NOT INTENDED FOR ANY OTHER USE OR REPRESENTATION

