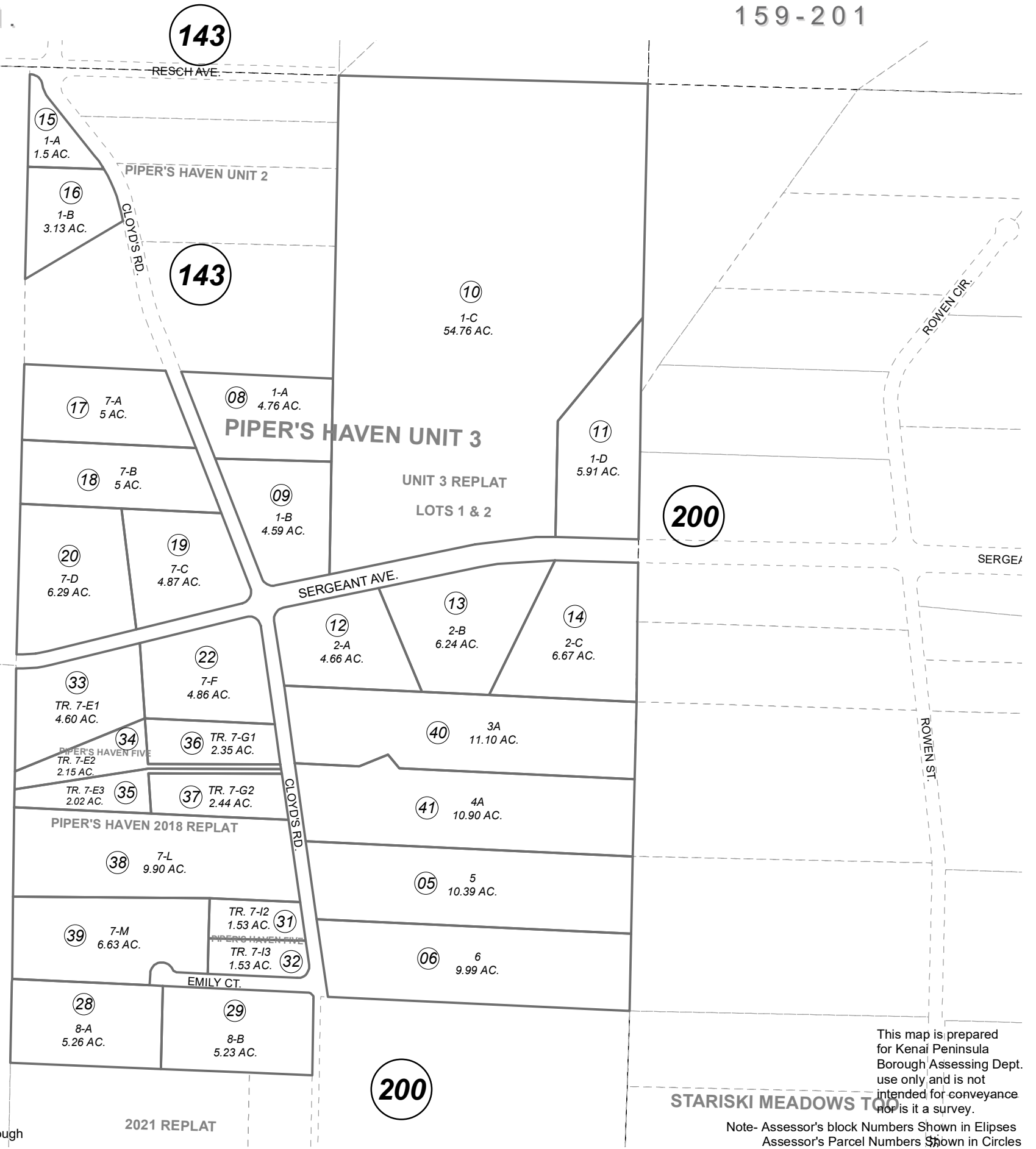


POR. SEC. 30, T03S, R14W, S.M.

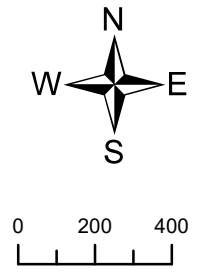
159-201

SEC. 19
SEC. 30

PIPERS HAVEN UNIT 3 HM0980009
 PIPER'S HAVEN UNIT 3 REPLAT HM2000013
 PIPER'S HAVEN 2000 HM2000029
 PIPERS HAVEN FIVE HM2003074
 PIPER'S HAVEN 2018 REPLAT HM2018041
 PIPER'S HAVEN UNIT 3 2021 REPLAT HM2022026



ANCHOR MILL SUBDIVISION



NOVEMBER 17, 2022

| For 2023 assessment roll | | |
|--------------------------|-------|--------|
| Delete | Add | Revise |
| To | | |
| 03,04 | 40,41 | |

Assessor's Map
Kenai Peninsula Borough

2021 REPLAT

This map is prepared for Kenai Peninsula Borough Assessing Dept. use only and is not intended for conveyance nor is it a survey.

STARISKI MEADOWS TWP

Note- Assessor's block Numbers Shown in Ellipses
Assessor's Parcel Numbers Shown in Circles