

173-520

POR. SE 1/4 SW 1/4 SEC. 4 &
POR. NE 1/4 SW 1/4 SEC. 9, T06S, R14W, S.M.

022

STERLING HWY

CUNDIFF CT

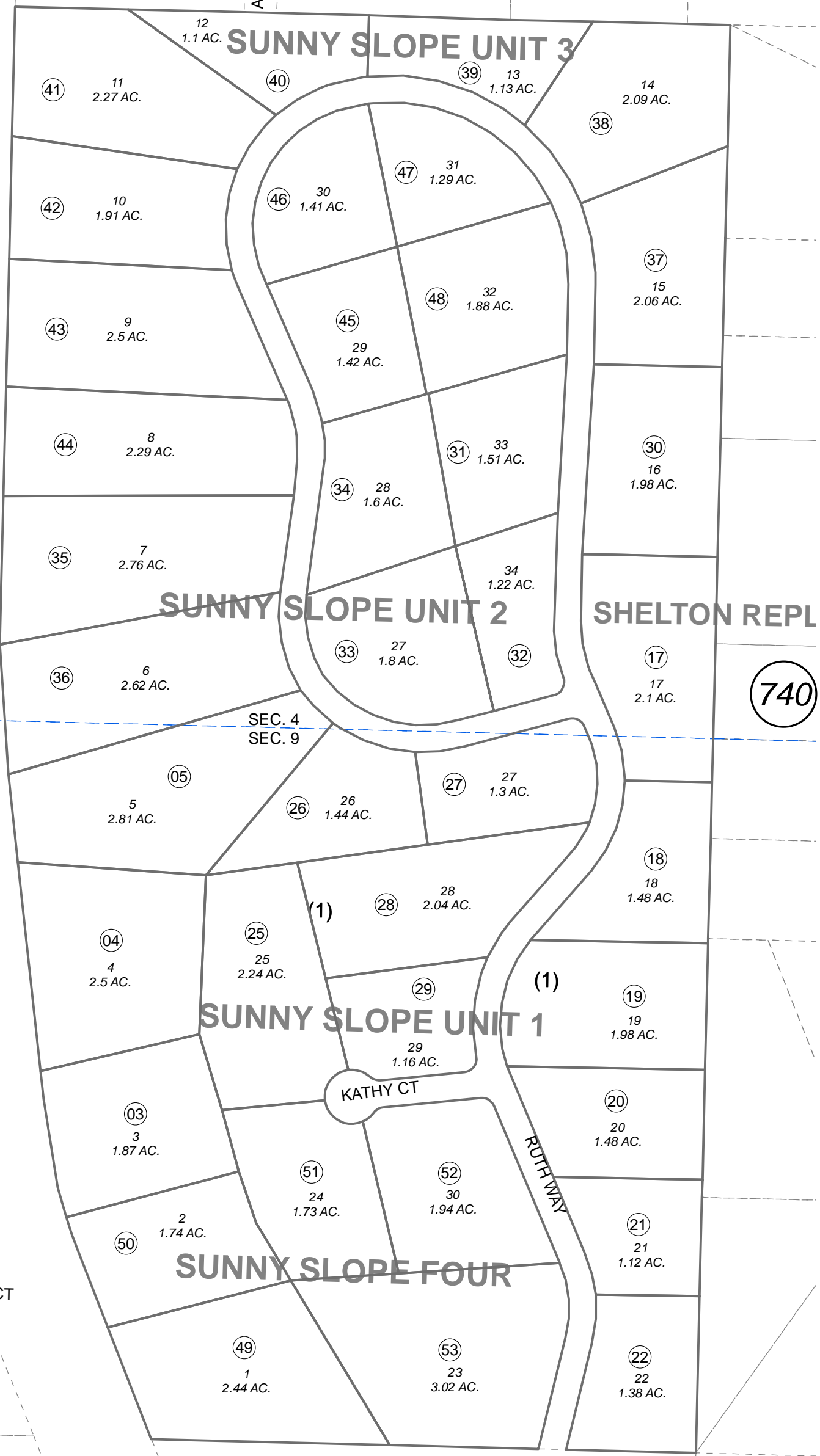
022

AGUSTA LN

471

470

UNIT 3

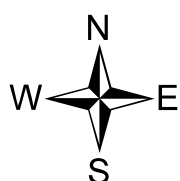


This map is prepared for Kenai Peninsula Borough Assessing Dept. use only and is not intended for conveyance nor is it a survey.

Note- Assessor's block Numbers Shown in Ellipses Assessor's Parcel Numbers Shown in Circles

SUNNY SLOPE SUB UNIT 1 HM0750033
SUNNY SLOPE SUB UNIT 2 HM0780061
SUNNY SLOPE SUB UNIT 3 HM0850060
SUNNY SLOPE FOUR HM2006058
RECORD OF SURVEY HM2013011

Assessor's Map Kenai Peninsula Borough



0 100 200 Feet

FEBRUARY 12, 2014

For 2014 assessment roll	
Delete	Add
	Revise
To	22, 37, 49
(ACREAGE CHANGE)	