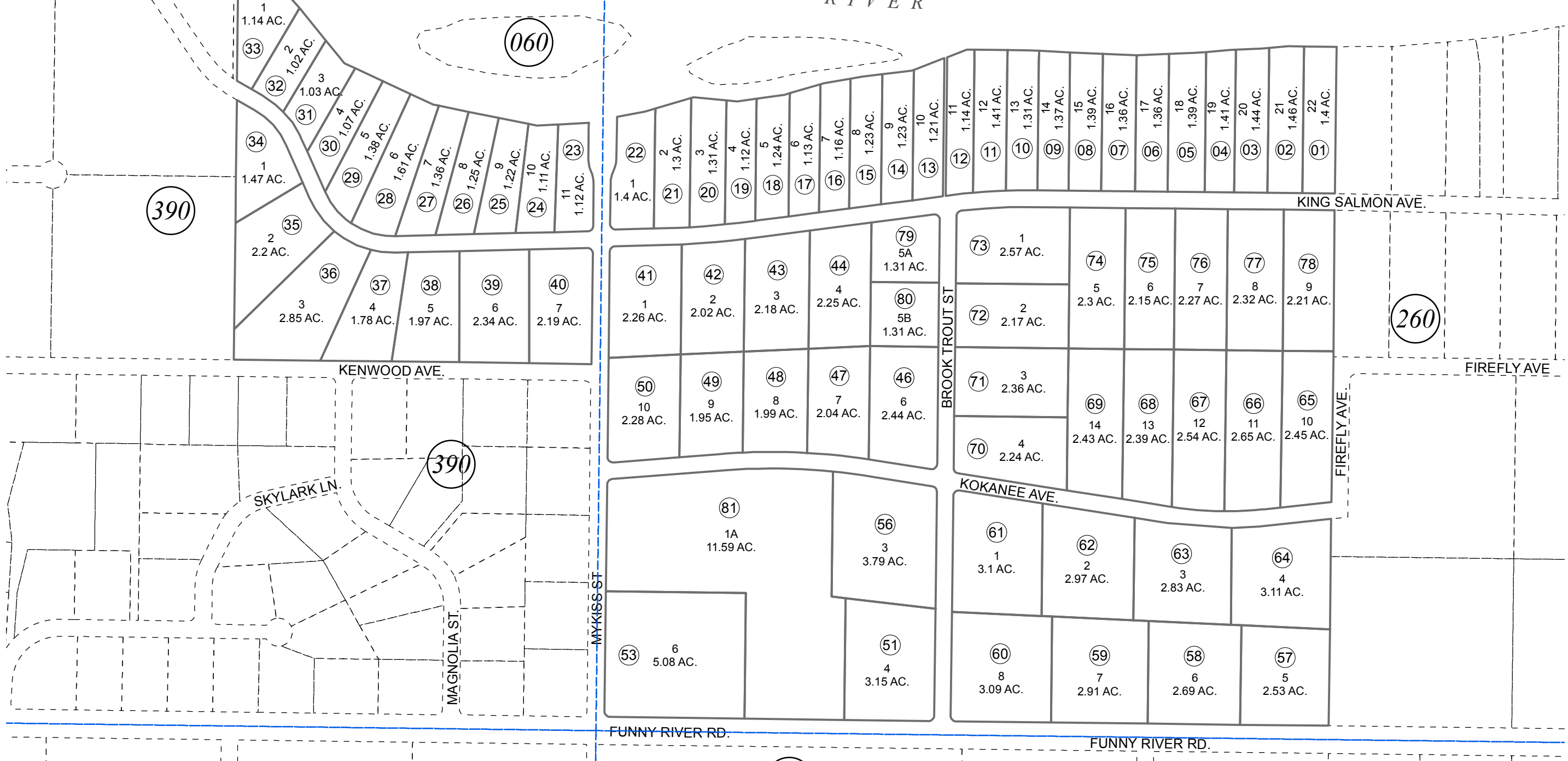


KENAI RIVER

COWAN RD.



390

060

260

390

040

041



0 100 200 400 Feet

DECEMBER 22, 2015

For 2016 assessment roll		
Delete	Add	Revise
To		
52,54		
55	81	

Assessor's Map
Kenai Peninsula Borough

BEND IN THE RIVER SUB KN0750114
 BEND IN THE RIVER SUB SOLAND ADDN KN0950063
 BEND IN THE RIVER SUB HEAD REPLAT KN2015084

This map is prepared for Kenai Peninsula Borough Assessing Dept. use only and is not intended for conveyance nor is it a survey.

Note- Assessor's block Numbers Shown in Ellipses
 Assessor's Parcel Numbers Shown in Circles