

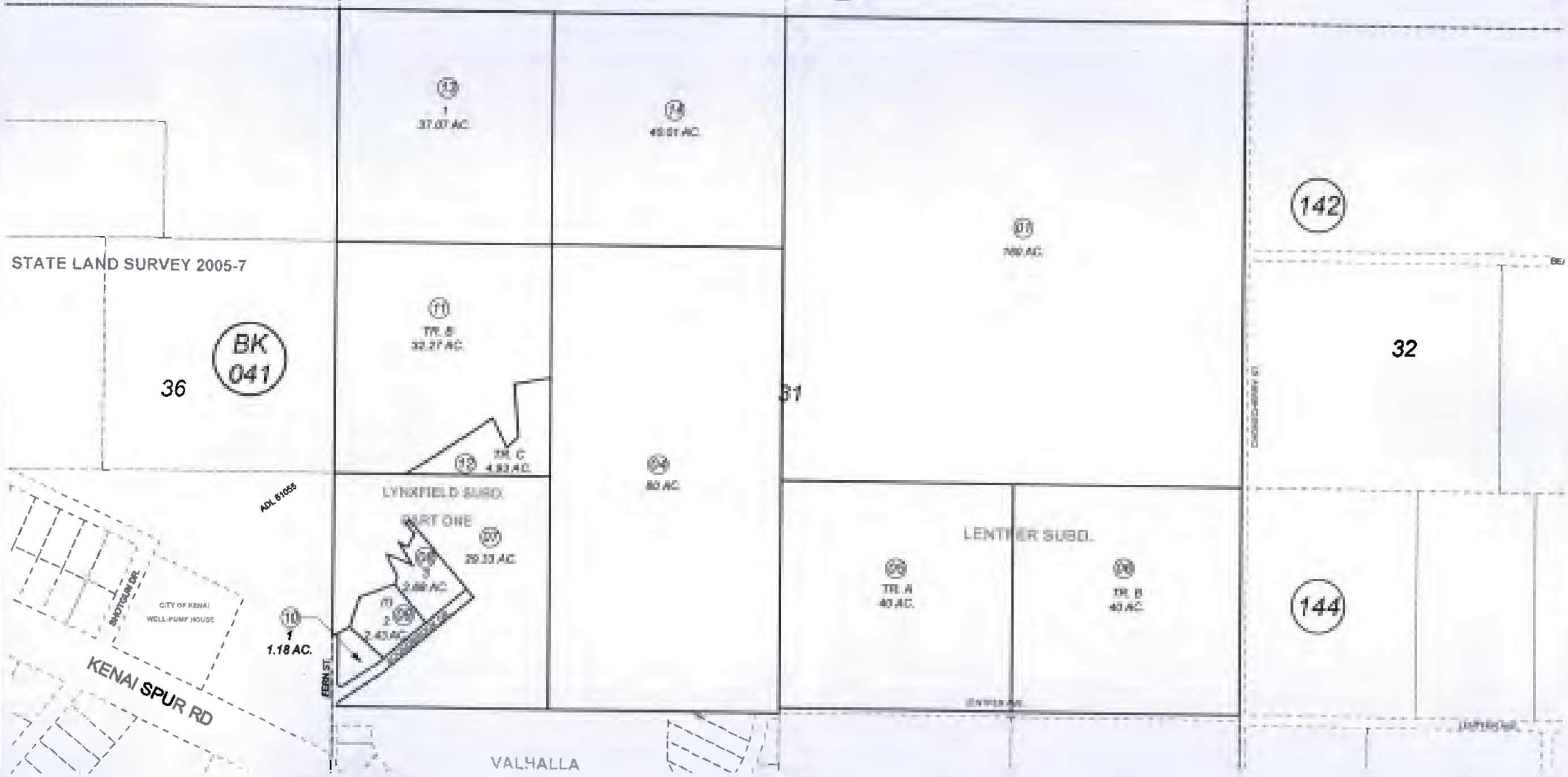
POR. SEC. 31, T06N, R10W, S.M.

025-141

25

30 (140)

29



BK 041

142

32

144

BK 049



MAY 29, 2007

For 2008 assessment roll		
Delete	Add	Revise
To		
2	11-14	

Assessor's Map  
Kenai Peninsula Borough

LENTFER SUB KN0850030  
LYNXFIELD SUB PART ONE KN0860232  
ALASKA STATE LAND SURVEY 2005-7 KN2007001

This map is prepared for Kenai Peninsula Borough Assessing Dept. use only and is not intended for conveyance nor is it a survey.  
Note- Assessor's block Numbers Shown in Ellipses  
Assessor's Parcel Numbers Shown in Circles