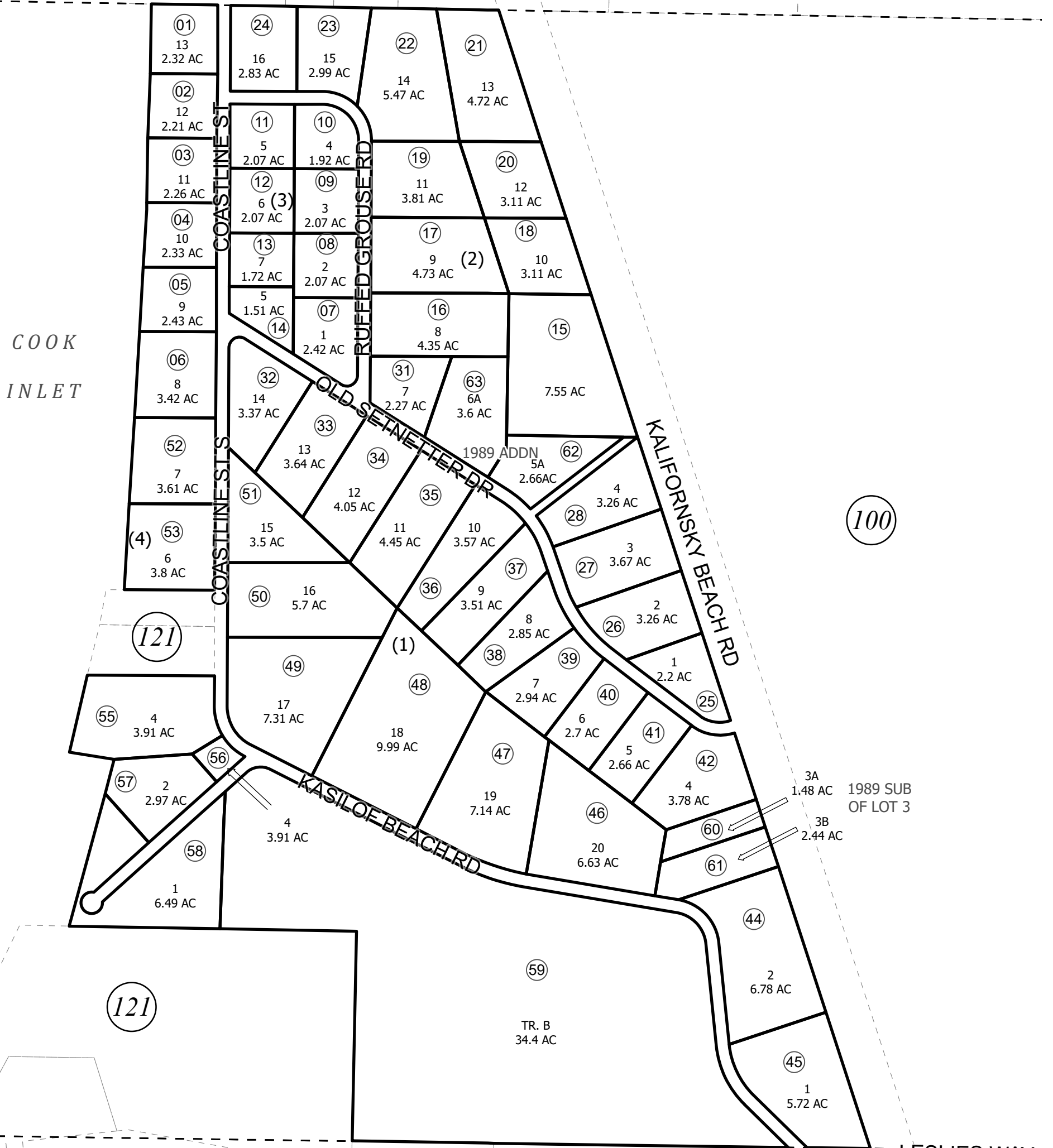


DAYTON AVE (110)  
**KASILOF ALASKA SUB AMENDED**



100

121

121

BK  
133

This map is prepared for Kenai Peninsula Borough Assessing Dept. use only and is not intended for conveyance nor is it a survey.

Note- Assessor's block Numbers Shown in Elipses  
 Assessor's Parcel Numbers Shown in Circles

JUNE 11, 2022

For 2023 assessment roll		
Delete	Add	Revise
To		
54	131-121+	



0 100 200 400 Feet

Assessor's Map  
 Kenai Peninsula Borough

KASILOF ALASKA SUB AMENDED KN0830166  
 RECORD OF SURVEY KN0830166  
 KASILOF ALASKA SUB 1989 SUB OF LOT 3 KN0890034  
 KASILOF ALASKA SUB 1989 ADDN KN0980094