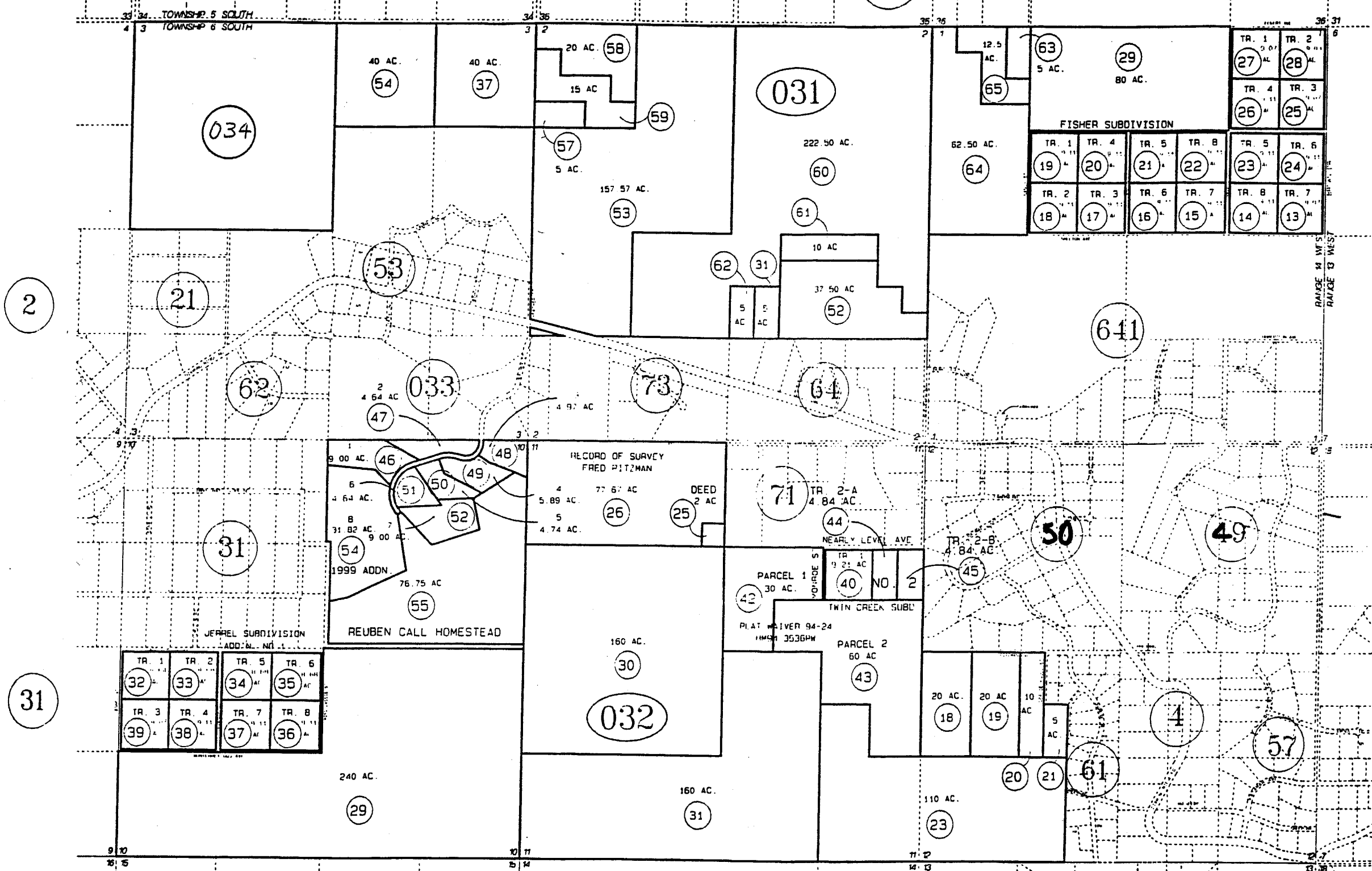


SECTIONS 1-3, 10-12, T6S, R14W, SEWARD MERIDIAN

BK 171

173-030



DATE: DEC 18, 2001

FOR 20... ASSESSMENT ROLL		
DELETE	ADD	REVISED

TO  
17308139 173034+

Assessor's Map  
Kenai Peninsula Borough

FISHER SUBDIVISION  
BERSCH SUBDIVISION  
JERREL SUBD. ADDN. NO. 1  
TWIN CREEK SUBDIVISION  
PLAT WAIVER 91-36  
PLAT WAIVER 94-24  
PITZMAN RECORD OF SURVEY  
TWIN CREEK NO. 2  
REUBEN CALL HMSTD.  
REUBEN CALL HMSTD. 1999 ADDN.

HM760044  
HM760095  
HM770021  
HM780038  
HM91XXXX  
HM943536PW  
HM960036RS  
HM960046  
HM980047  
HM990046

THIS MAP IS PREPARED FOR KENAI PENINSULA BOROUGH ASSESSING DEPT. USE ONLY AND IS NOT INTENDED FOR CONVEYANCE NOR IS IT A SURVEY

NOTE - Assessor's Block Numbers Shown in Ellipses  
Assessor's Parcel Numbers Shown in Circles

