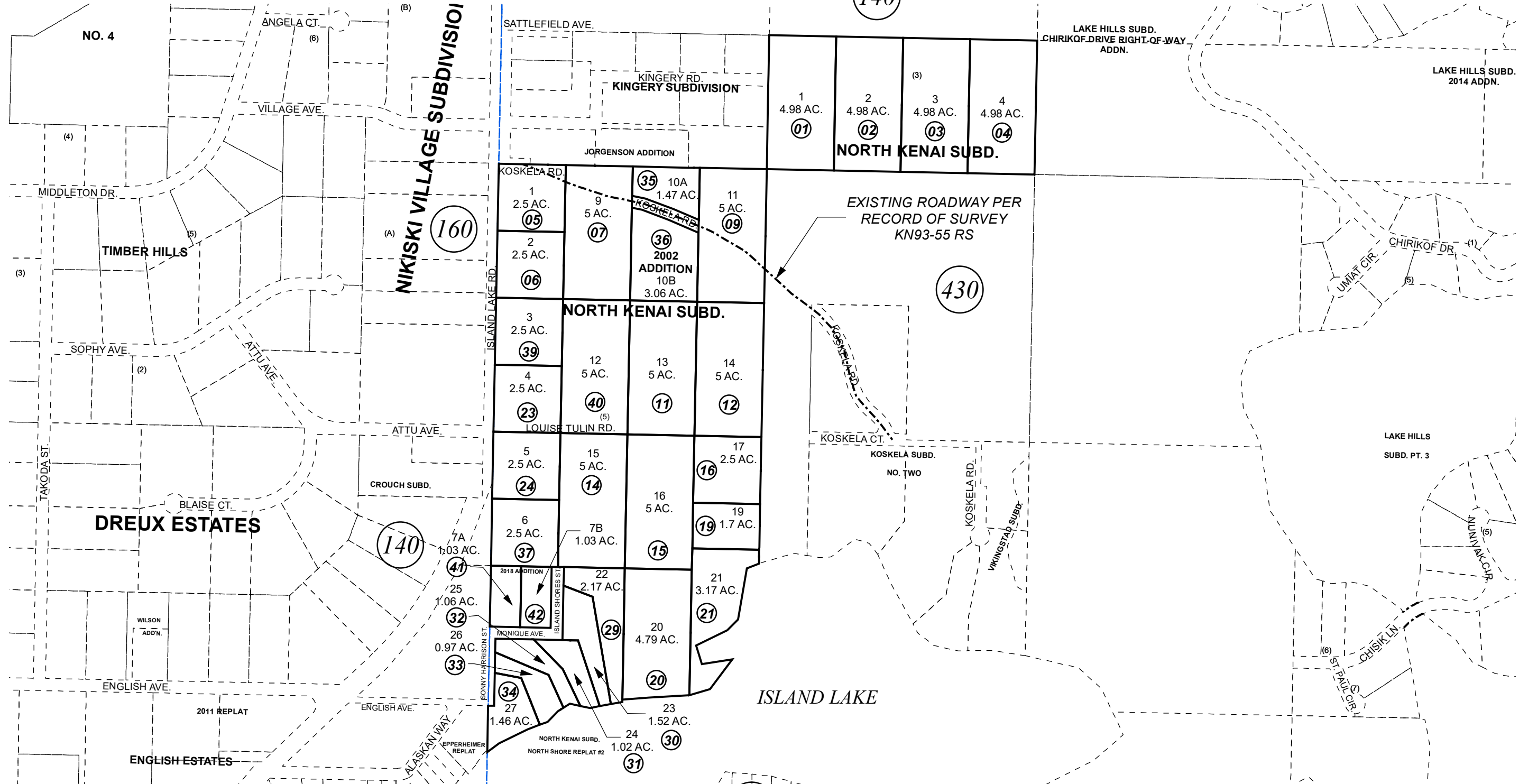


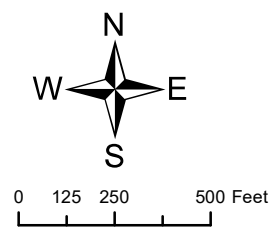
POR. SEC. 12, T07N, R12W, S.M.

140

012-170



NOVEMBER 15, 2018



For 2019 assessment roll		
Delete	Add	Revise
To		
38	41,42	

Assessor's Map
Kenai Peninsula Borough

- KN0020330 NORTH KENAI SUB
- KN0910023 NORTH KENAI SUB LOT 21
- KN2002007 NORTH KENAI SUB NORTH SHORE REPLAT # 2 AMENDED
- KN2003014 NORTH KENAI SUB 2002 ADDN
- KN2018064 NORTH KENAI SUB 2018 ADDN

This map is prepared for Kenai Peninsula Borough Assessing Dept. use only and is not intended for conveyance nor is it a survey.
Note- Assessor's block Numbers Shown in Ellipses
Assessor's Parcel Numbers Shown in Circles