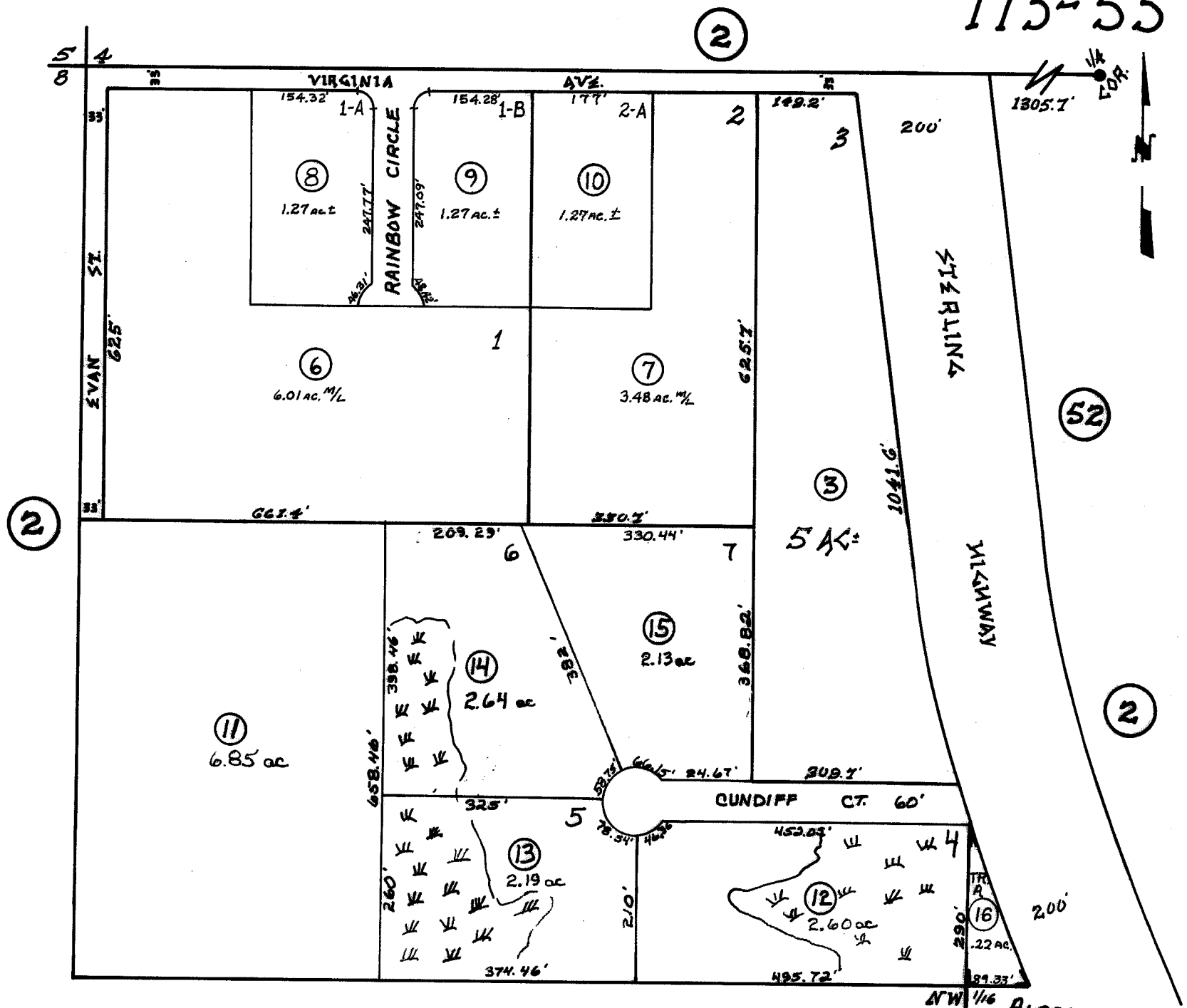


NW 1/4 NW 1/4 & PTN. NE 1/4 NW 1/4 W. OF HWY
SEC. 9, T6S, R.14W, S.B. & M.



CUNDIFF SUB. 76-22
 Addition No. 1 77-90
 " " 2 H-79-27

Kenai Peninsula Borough, Alaska

NOTE - Assessor's Block Numbers Shown in Ellipses
Assessor's Parcel Numbers Shown in Circles