

NE1/4 SEC. 5, T06S, R13W, S.M.

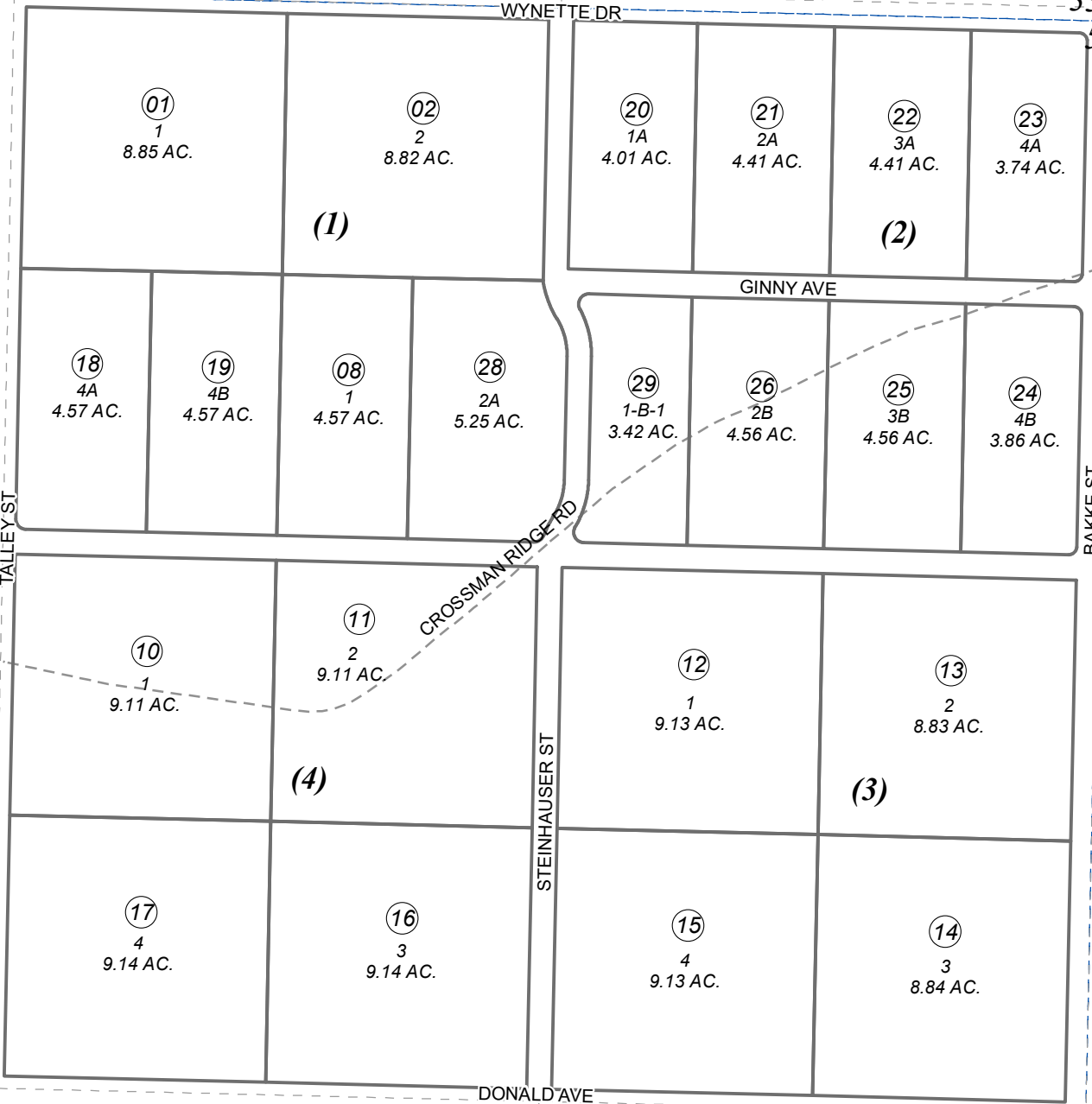
173-680

102

051

052

052

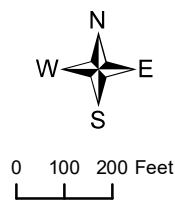


OCTOBER 11, 2023

For 2024 assessment roll		
Delete	Add	Revise
To		01
(ACREAGE REVISION)		

Assessor's Map
Kenai Peninsula Borough

BAKKE SUB □ HM0760032
 MEDICINE MEADOWS SUB □ HM0800081
 BAKKE SUB NO 3 □ HM0840168
 BAKKE SUB NO 2 □ HM0860048
 BAKKE SUB 2003 ADDN □ HM2003081
 RECORD OF SURVEY HM2010006
 RECORD OF SURVEY HM2010044
 RECORD OF SURVEY HM2023028



This map is prepared for Kenai Peninsula Borough Assessing Dept. use only and is not intended for conveyance nor is it a survey.

Note- Assessor's block Numbers Shown in Elipses
Assessor's Parcel Numbers Shown in Circles