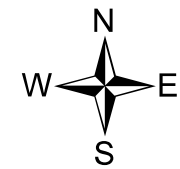
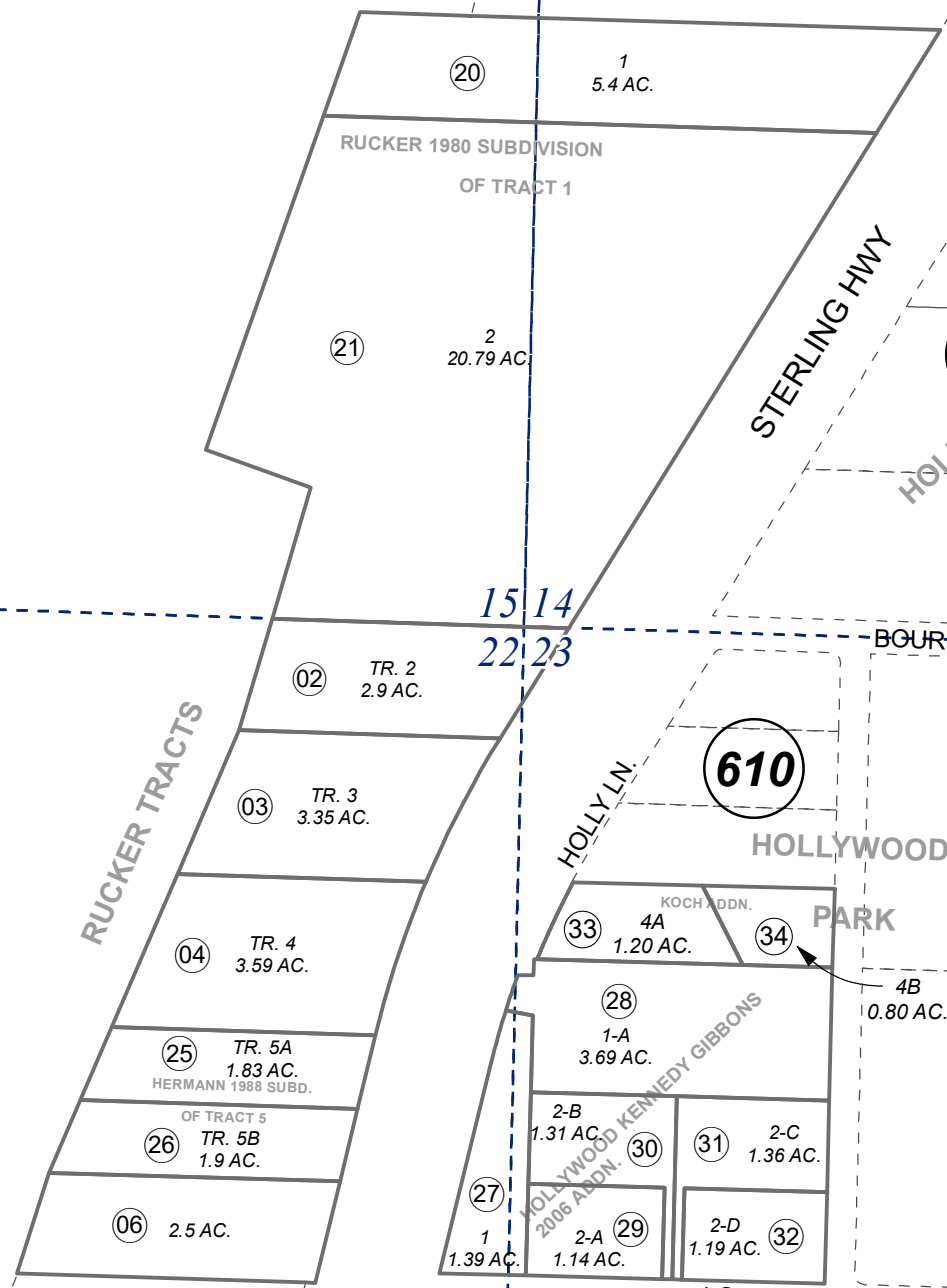


POR. SEC. 14, 15, 22 & 23, T04S, R15W, S.M.

165-630

COOK
INLET

UBDIVISION
RES ADD'N.



0 200 400 Feet

DECEMBER 6, 2021

For 2022 assessment roll		
Delete	Add	Revise
To		
610-04	33,34	

631

Assessor's Map
Kenai Peninsula Borough

RUCKER TRACTS SUB HM0800029
 RUCKER 1980 SUB OF TRACT 1 HM0800110
 RUCKER TRACTS HM0880038
 HOLLYWOOD KENNEDY GIBBONS 2006 ADDN HM2007108
 RECORD OF SURVEY HOLLYWOOD KENNEDY GIBBONS
 2006 ADDN LOTS 1 AND 1-A HM2008019
 HOLLYWOOD PARK KOCH ADDN HM2021055

610

610

610

620

620

This map is prepared for Kenai Peninsula Borough Assessing Dept. use only and is not intended for conveyance nor is it a survey.

Note- Assessor's block Numbers Shown in Elipses
Assessor's Parcel Numbers Shown in Circles