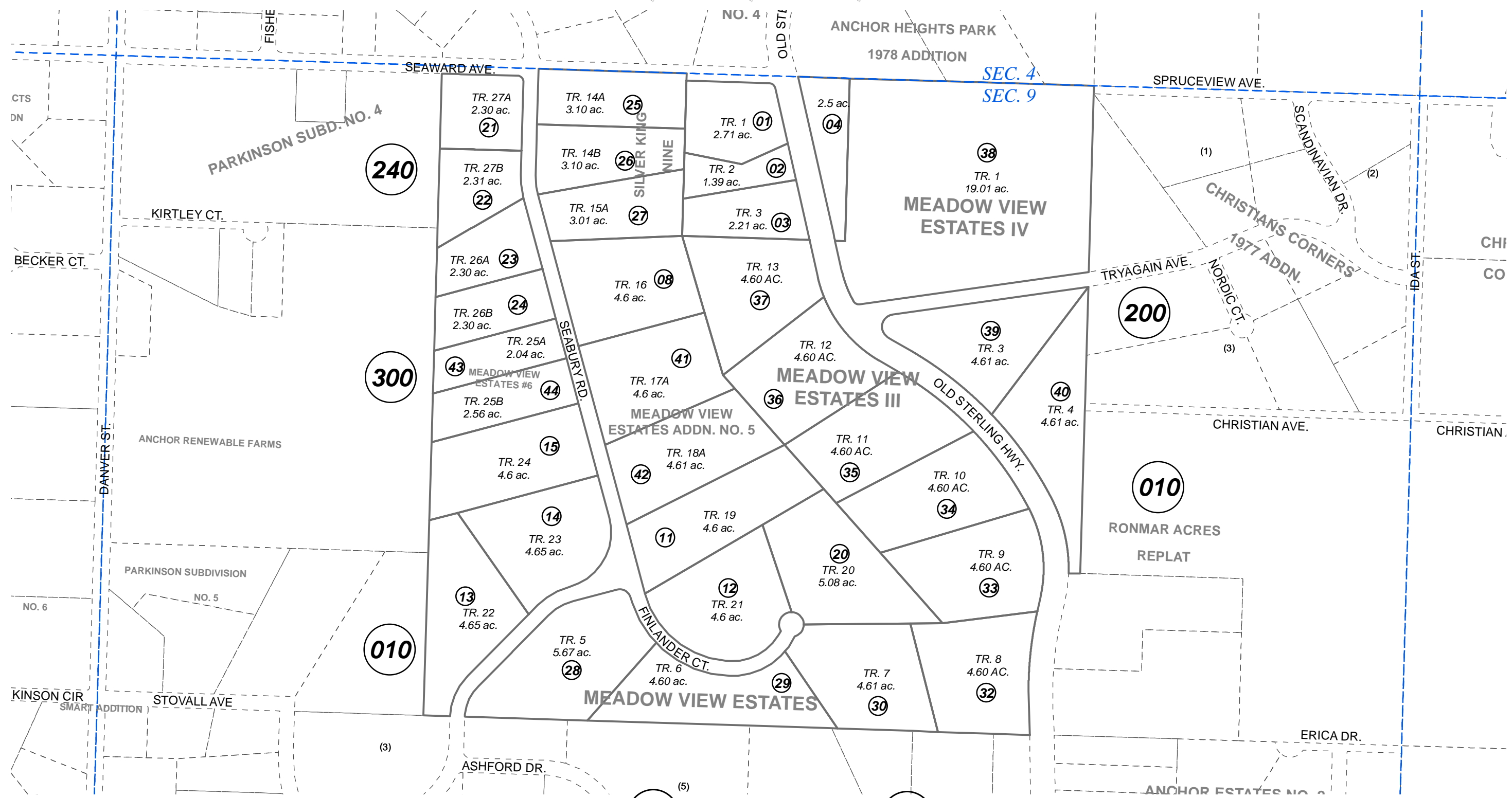


W 1/2 NE 1/4 & E 1/2 NW 1/4 SEC. 9, T05S, R15W, S.M.

169-360



DECEMBER 3, 2013

| For 2014 assessment roll | | |
|--------------------------|-------|--------|
| Delete | Add | Revise |
| To | | |
| 16 | 43,44 | |

Assessor's Map
Kenai Peninsula Borough

- SILVER KING NINE SUB HM0970008
- MEADOW VIEW ESTATES HM0990065
- MEADOW VIEW ESTATES II HM2001035
- MEADOW VIEW ESTATES III HM2005049
- MEADOW VIEW ESTATES IV HM2006059
- MEADOW VIEW ESTATES ADDN NO 5 HM2008089
- MEADOW VIEW ESTATES #6 HM2013031

This map is prepared for Kenai Peninsula Borough Assessing Dept. use only and is not intended for conveyance nor is it a survey.

Note- Assessor's block Numbers Shown in Elipses
Assessor's Parcel Numbers Shown in Circles

