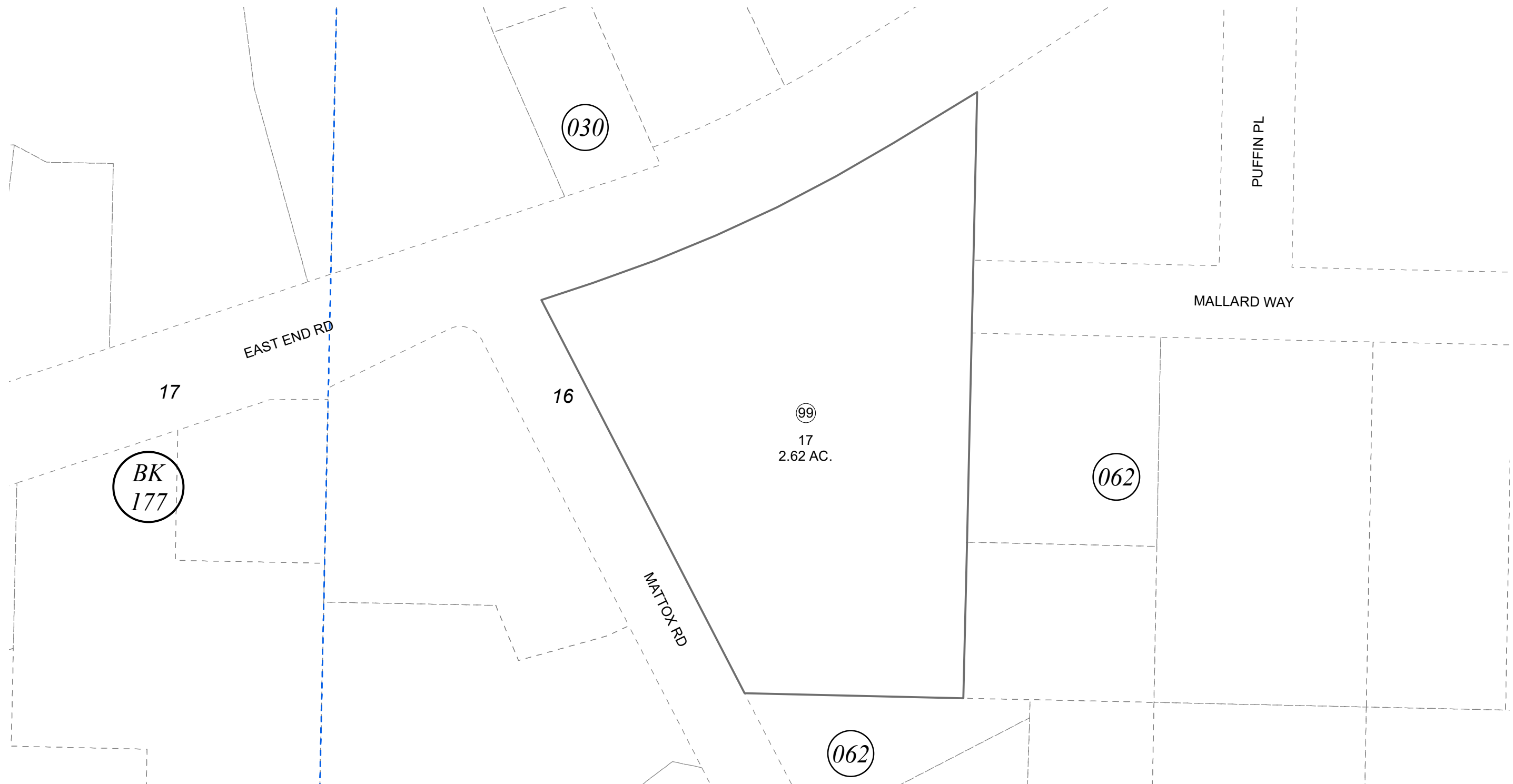
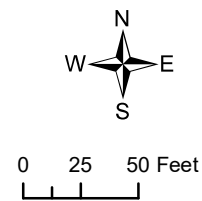


POR. OF SW1/4 SW1/4 SEC. 16, T06S, R13W, S.M.

179-064



AUGUST 23, 2023



For 2024 assessment roll		
Delete	Add	Revise
	To	99
(ACREAGE REVISION)		

Assessor's Map
Kenai Peninsula Borough

MATTOX SUB LOT 17 HM0030017
RECORD OF SURVEY HM2023026

This map is prepared for Kenai Peninsula Borough Assessing Dept. use only and is not intended for conveyance nor is it a survey.

Note- Assessor's block Numbers Shown in Elipses
Assessor's Parcel Numbers Shown in Circles