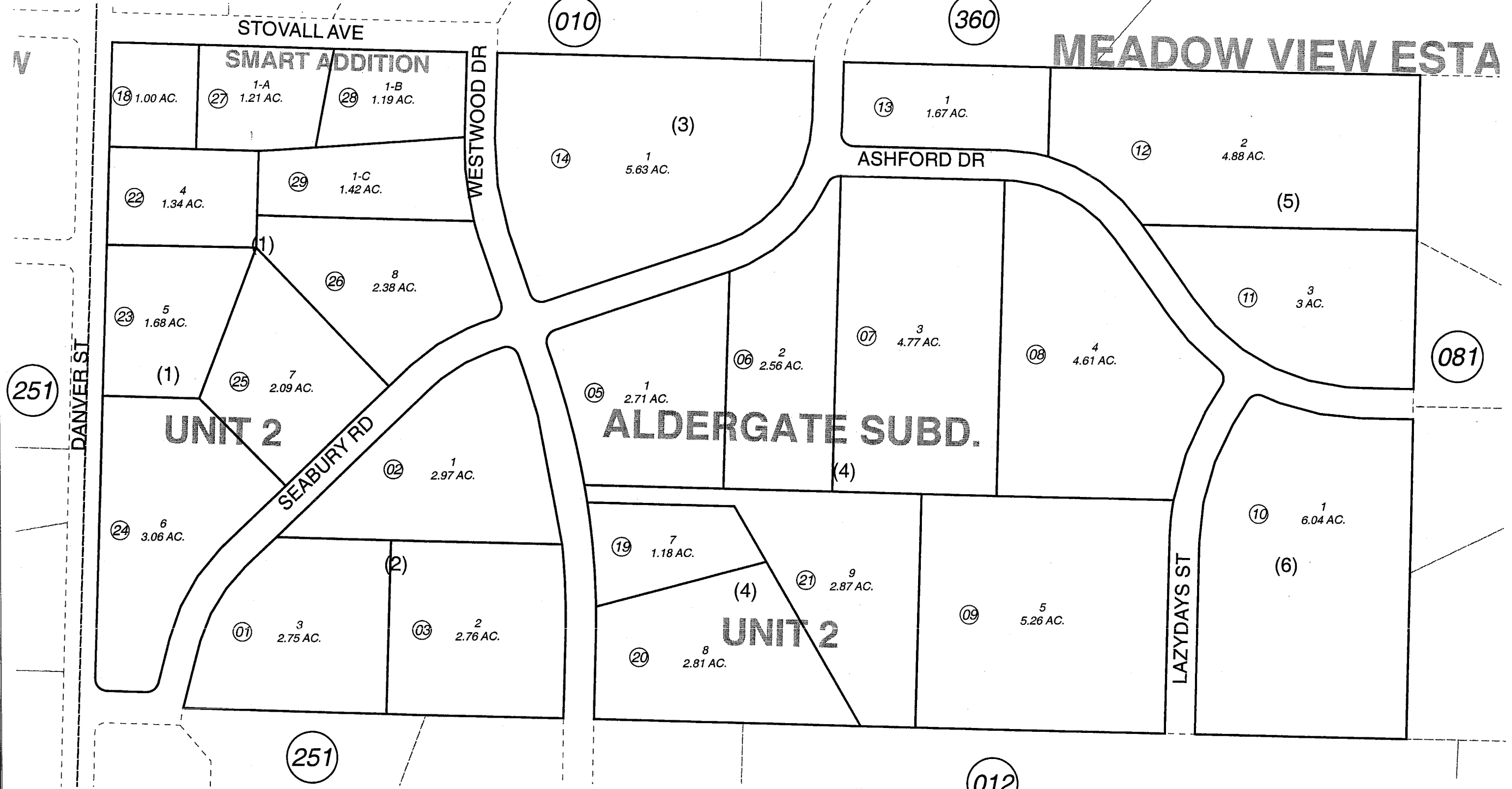


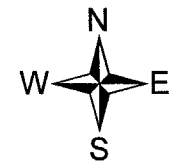
N1/2 SW1/4 SEC. 9, T05S, R15W, S.M.

169-180



NOVEMBER 13, 2006

For 2007 assessment roll		
Delete	Add	Revise
To		
15	27-29	



Assessor's Map  
Kenai Peninsula Borough

ALDERGATE SUB HM0760066  
ALDERGATE SUB UNIT 2 HM0850025  
ALDERGATE SUB SMART ADDN HM2006076

This map is prepared for Kenai Peninsula Borough Assessing Dept. use only and is not intended for conveyance nor is it a survey.

Note- Assessor's block Numbers Shown in Elipses  
Assessor's Parcel Numbers Shown in Circles