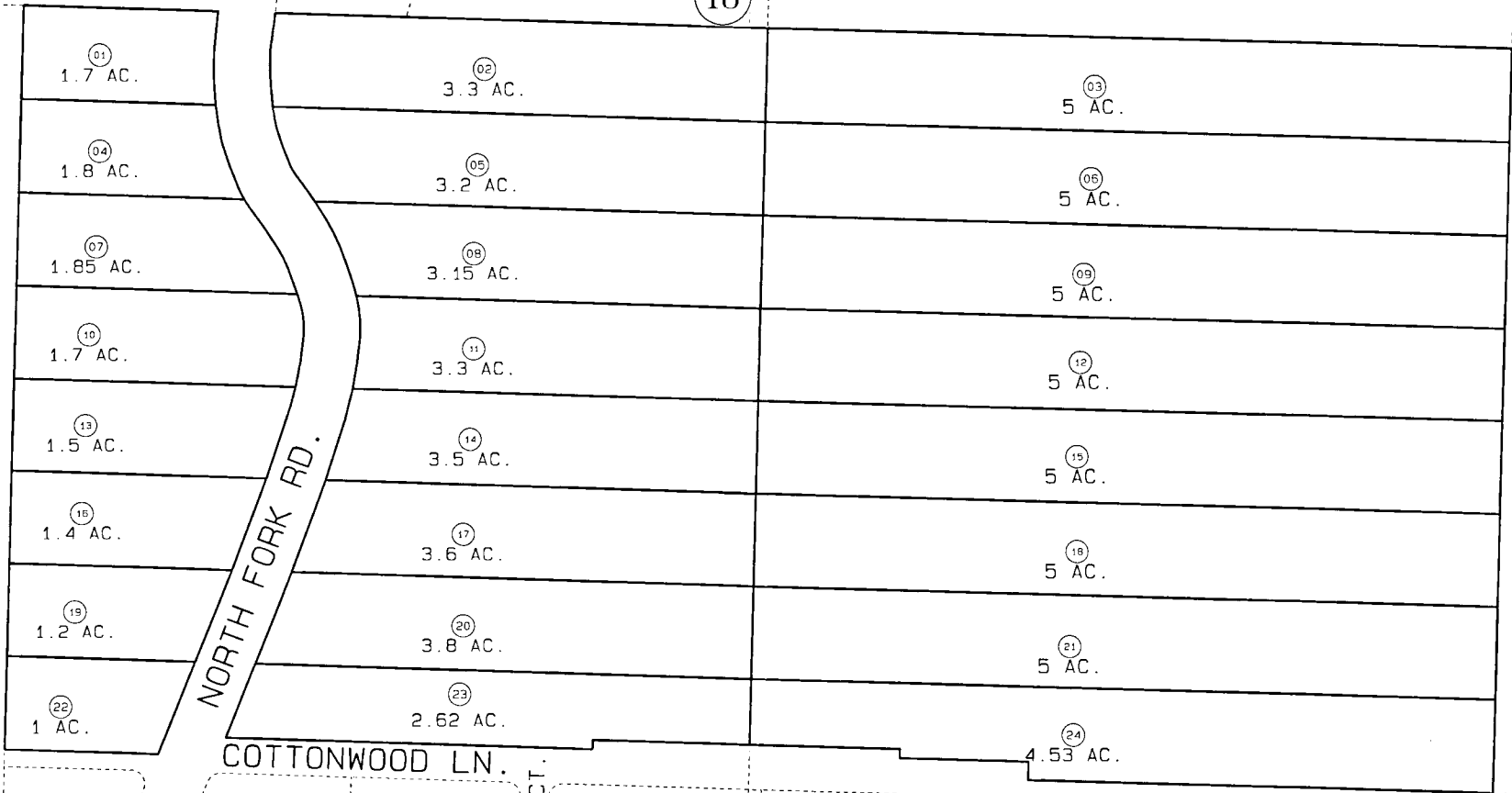


PORTION OF SEC. 30 & 31, T4S, R14W, SEWARD MERIDIAN

165-190

18



18

18

DATE MARCH 18, 1997
 FOR 1997 ASSESSMENT ROLL
 DELETE ADD REVISED
 TO 23,24
 (ACREAGE CHANGE)

Assessor's Map
 Kenai Peninsula Borough

18

CHRIS CT.

THIS MAP IS PREPARED FOR KENAI PENINSULA BOROUGH ASSESSING DEPT. USE ONLY AND IS NOT INTENDED FOR ANY OTHER USE OR REPRESENTATION

NOTE - Assessor's Block Numbers Shown in Ellipses
 Assessor's Parcel Numbers Shown in Circles

