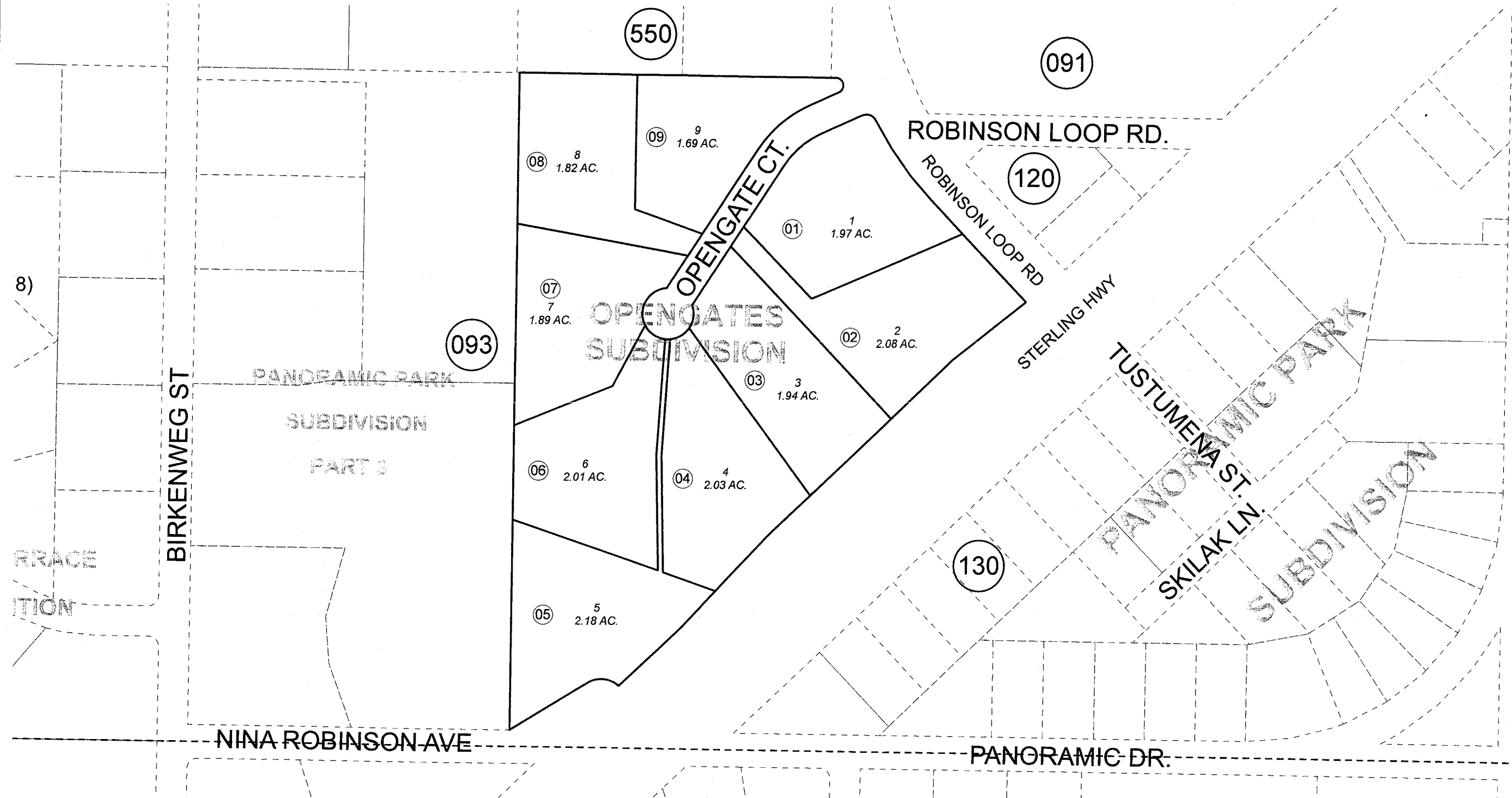


POR. S 1/2 SE 1/4 SEC. 17, T05N, R09W, S.M.

063-098



DECEMBER 21, 2007

For 2008 assessment roll		
Delete	Add	Revise
To		
NEW PAGE		



Assessor's Map  
Kenai Peninsula Borough

OPENGATES SUB KN2007108

This map is prepared for Kenai Peninsula Borough Assessing Dept. use only and is not intended for conveyance nor is it a survey.

Note- Assessor's block Numbers Shown in Ellipses  
Assessor's Parcel Numbers Shown in Circles