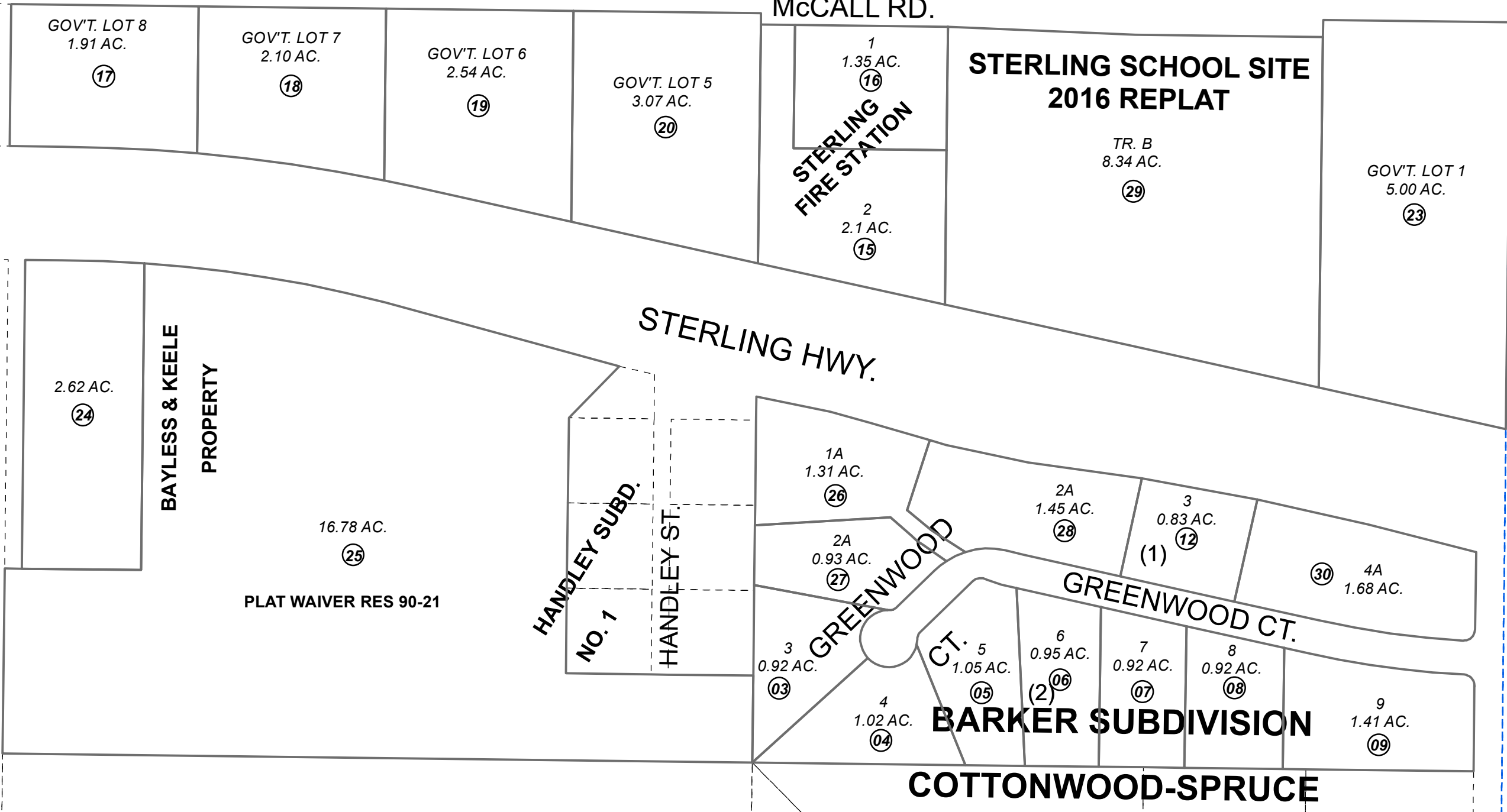


N1/2 SE1/4 SEC. 11, T05N, R09W, S.M.

063-680

490

ROI



620

770

640



0 50 100 200 Feet

DECEMBER 12, 2022

For 2023 assessment roll		
Delete	Add	Revise
	To	
10,11	30	

Assessor's Map
Kenai Peninsula Borough

BARKER SUB KN0780199
 STERLING FIRE STATION KN0860139
 BARKER SUB STERLING DRIVE VACATION KN0940063
 STERLING SCHOOL SITE 2016 REPLAT KN2016008
 BARKER SUB #2 KN2022075

This map is prepared for Kenai Peninsula Borough Assessing Dept. use only and is not intended for conveyance nor is it a survey.
 Note- Assessor's block Numbers Shown in Ellipses
 Assessor's Parcel Numbers Shown in Circles