

047

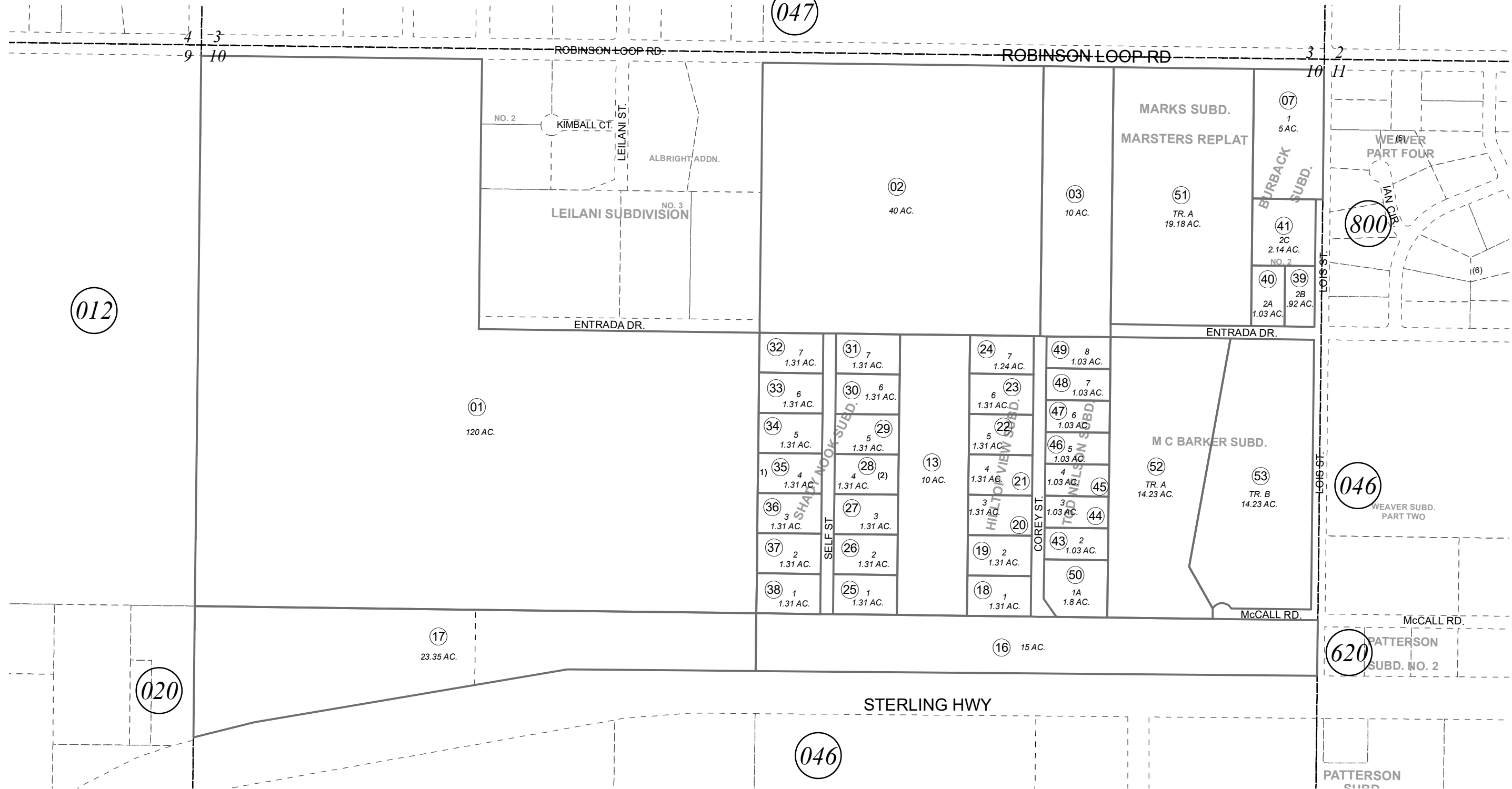
012

800

046

620

046



JULY 24, 2020

For 2021 assessment roll		
Delete	Add	Revise
To		
09,10	52,53	

SHADY NOOK SUB KN0840249
 HILLTOP VIEW SUB KN0840258
 BURBACK SUB NO 2 KN0850224
 TOD NELSON SUB KN0860107
 TOD NELSON SUB NO 2 KN0970093
 MARKS SUB MARSTERS REPLAT KN2008063
 M C BARKER SUB KN2020031

Assessor's Map
 Kenai Peninsula Borough

This map is prepared for Kenai Peninsula Borough Assessing Dept. use only and is not intended for conveyance nor is it a survey.

Note- Assessor's block Numbers Shown in Ellipses
 Assessor's Parcel Numbers Shown in Circles

