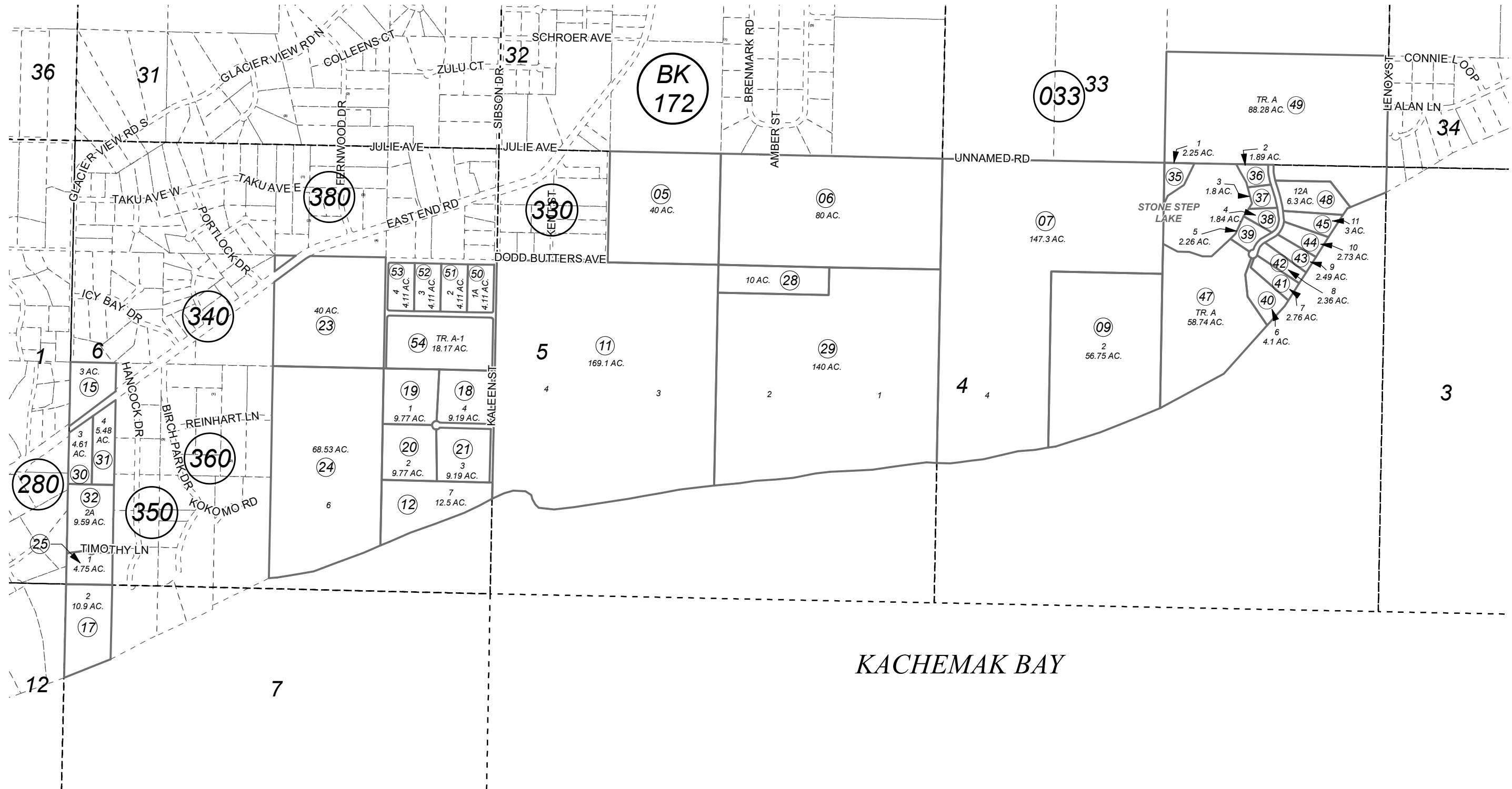


POR. SEC. 4-7, T06S, R12W, S.M.

174-320



KACHEMAK BAY

OCTOBER 30, 2023

For 2024 assessment roll		
Delete	Add	Revise
	To	
33,34	50-54	

GLEN ERIN SUB HM0880028
 GREENLANDS SUB NO 1 HM0940038
 GREENLANDS NO 2 HM0980084
 PATCH SUB HM2007046
 STONE STEP HM2007085
 STONE STEP NO 2 HM2009016
 PATCH SUB 2023 HM2023035

Assessor's Map
 Kenai Peninsula Borough

This map is prepared for Kenai Peninsula Borough Assessing Dept. use only and is not intended for conveyance nor is it a survey.

Note- Assessor's block Numbers Shown in Ellipses
 Assessor's Parcel Numbers Shown in Circles

