

POR. SEC. 1, T6S, R13W, SEWARD MERIDIAN

174-270

6

28

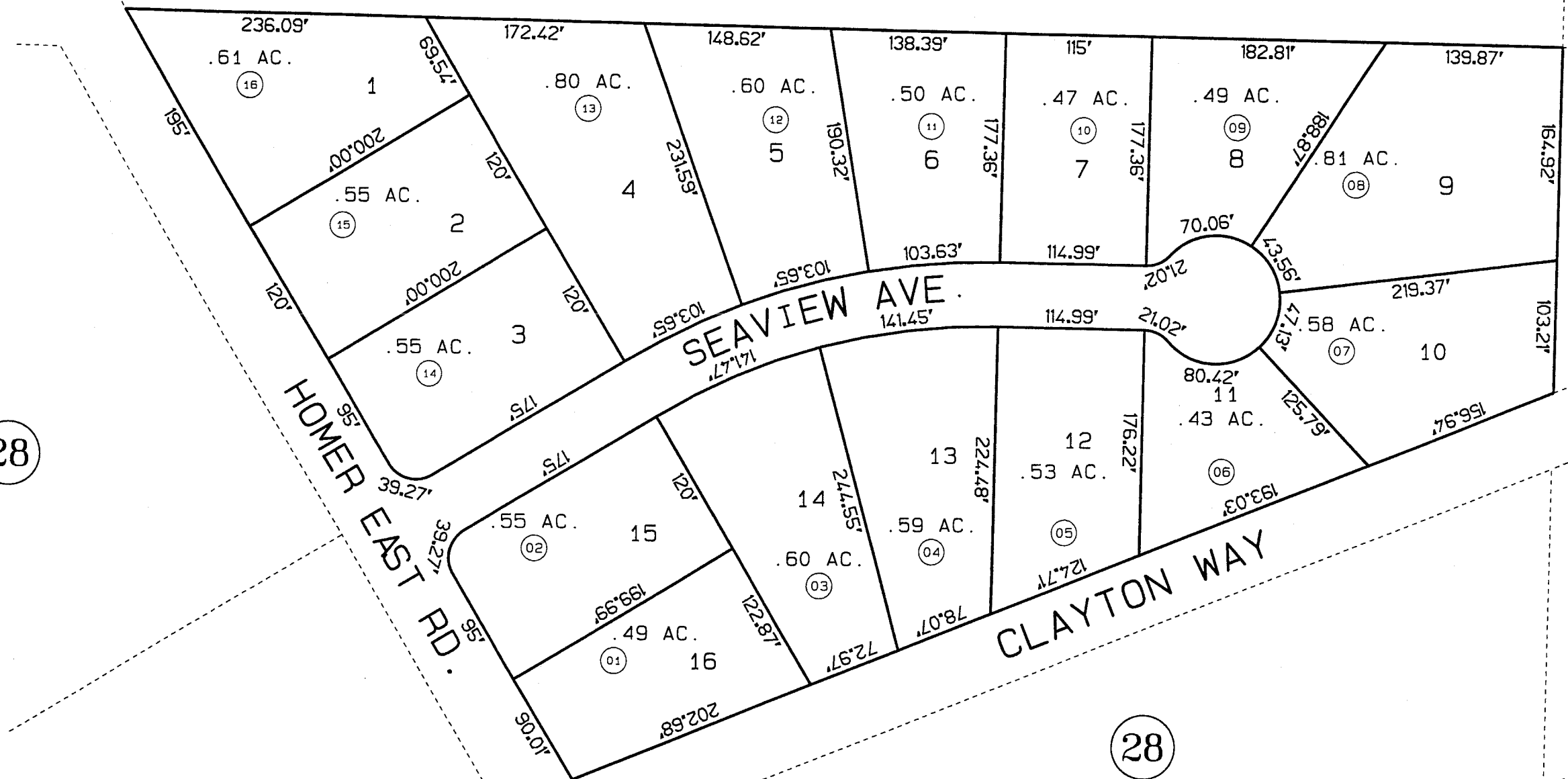
28

DATE: FEB. 6, 1996		
FOR 19 96 ASSESSMENT ROLL		
DELETE	ADD	REVISED
TO		
REVISED PAGE		

Assessor's Map
Kenai Peninsula Borough

SEAVIEW HM690641

NOTE - Assessor's Block Numbers Shown In Ellipses
Assessor's Parcel Numbers Shown In Circles



THIS MAP IS PREPARED
FOR KENAI PENINSULA
BOROUGH ASSESSING DEPT.
USE ONLY AND IS NOT
INTENDED FOR ANY
OTHER USE OR REPRESENTATION

