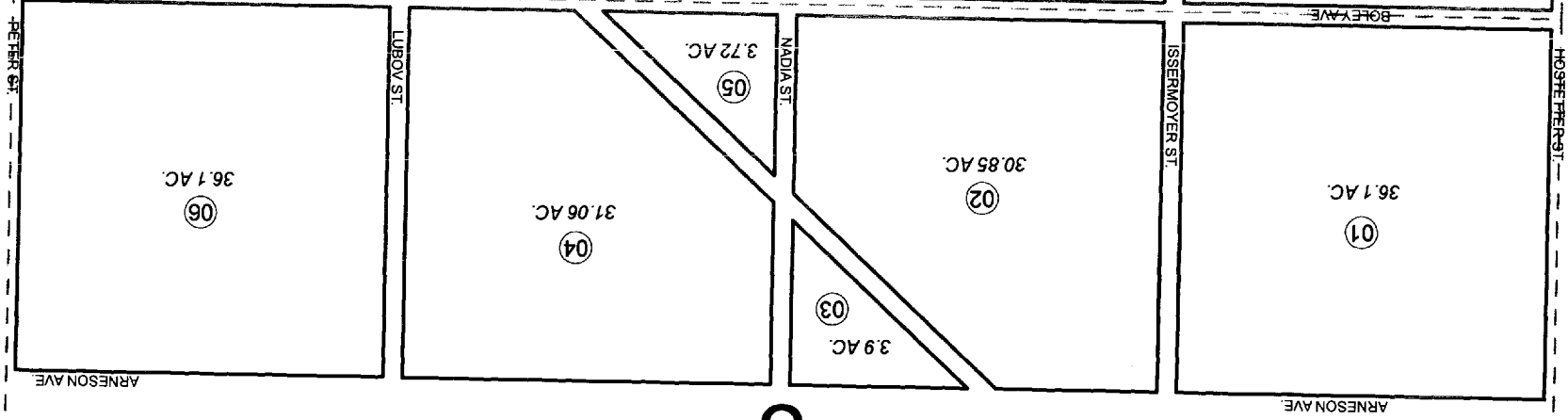


S 1/4 SEC. 8 & N 1/2 SEC. 17, T02S, R12W, S.M.

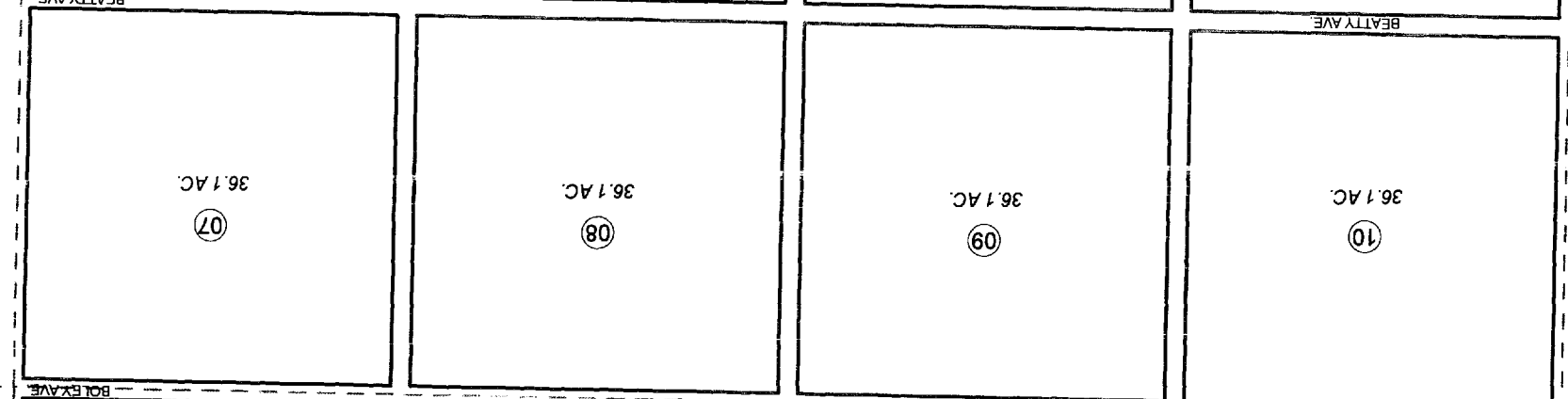
185-489

495

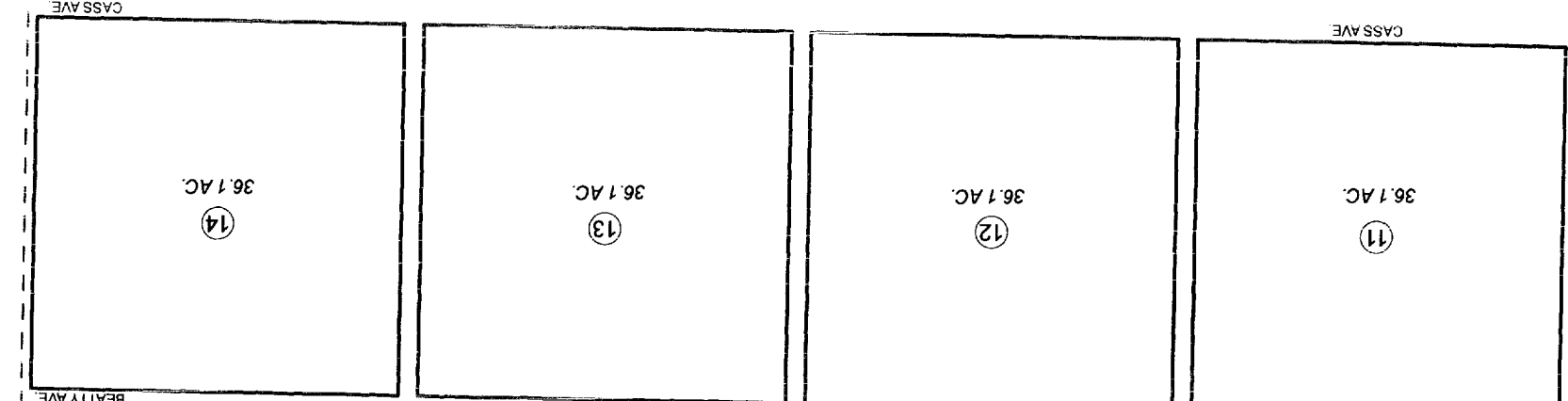
8



494



483



488

17

JANUARY 18, 2011

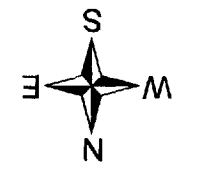
For 2011 assessment roll

Delete Add Revise

02-05

(ACREAGE CHANGE)

Assessor's Map
Kenai Peninsula Borough



This map is prepared for Kenai Peninsula Borough Assessing Dept. use only and is not intended for conveyance nor is it a survey. Note- Assessor's block Numbers Shown in Ellipses Assessors Parcel Numbers Shown in Circles