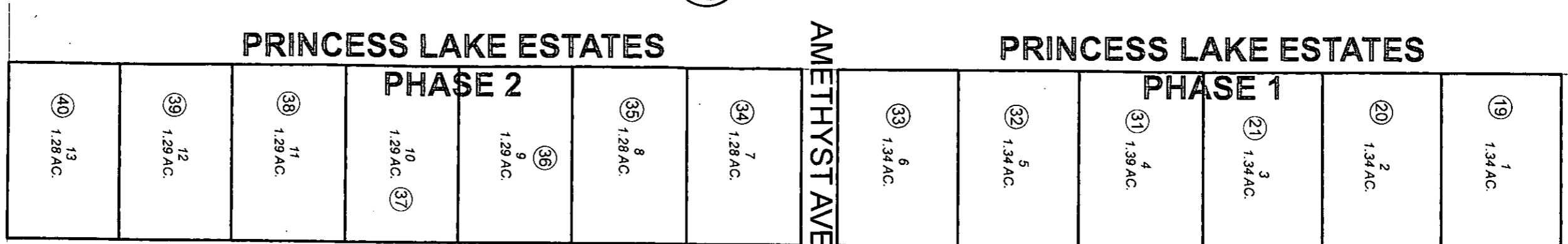
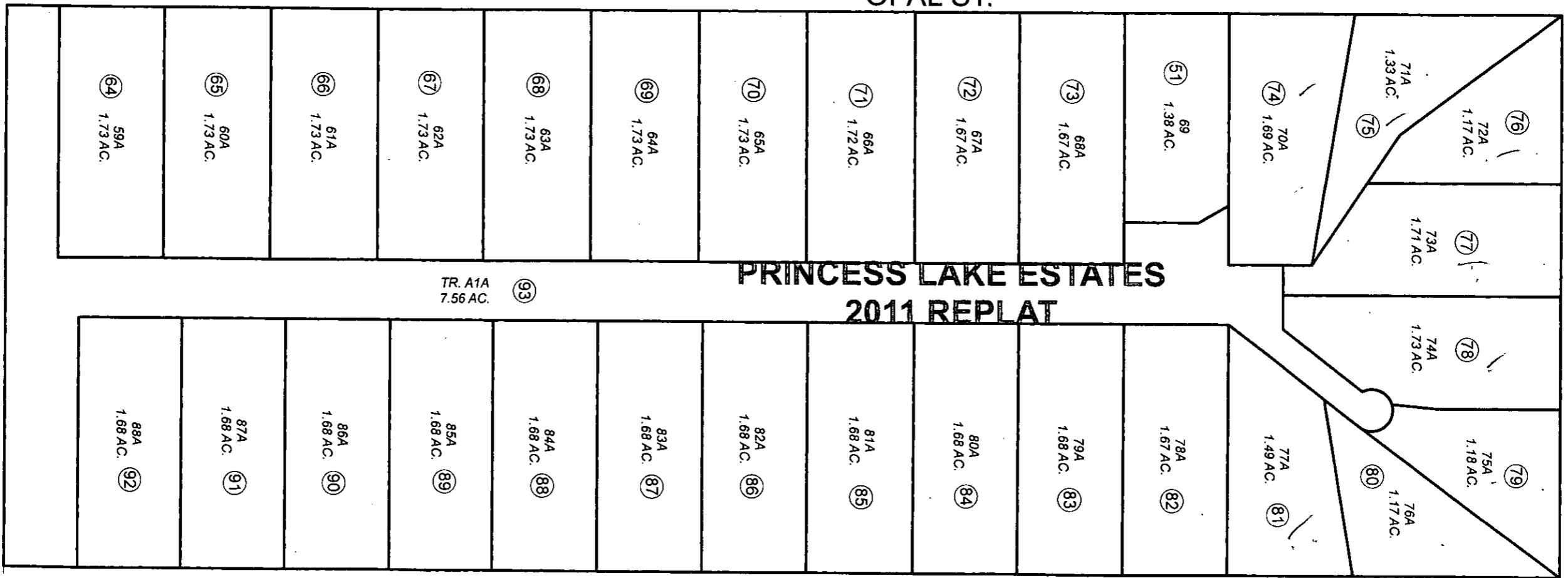


260



OPAL ST.



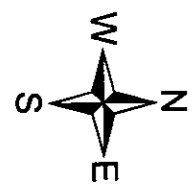
WALLERS ST.

080

LOWER SALAMATOF AVE.

254

260



1" = 200 feet

Assessor's Map
Kenai Peninsula Borough

Note- Assessor's block Numbers Shown in Ellipses
Assessor's Parcel Numbers Shown in Circles

This map is prepared for Kenai Peninsula Borough Assessing Dept. use only and is not intended for conveyance nor is it a survey.