

LOWER SALAMATOF AVE.

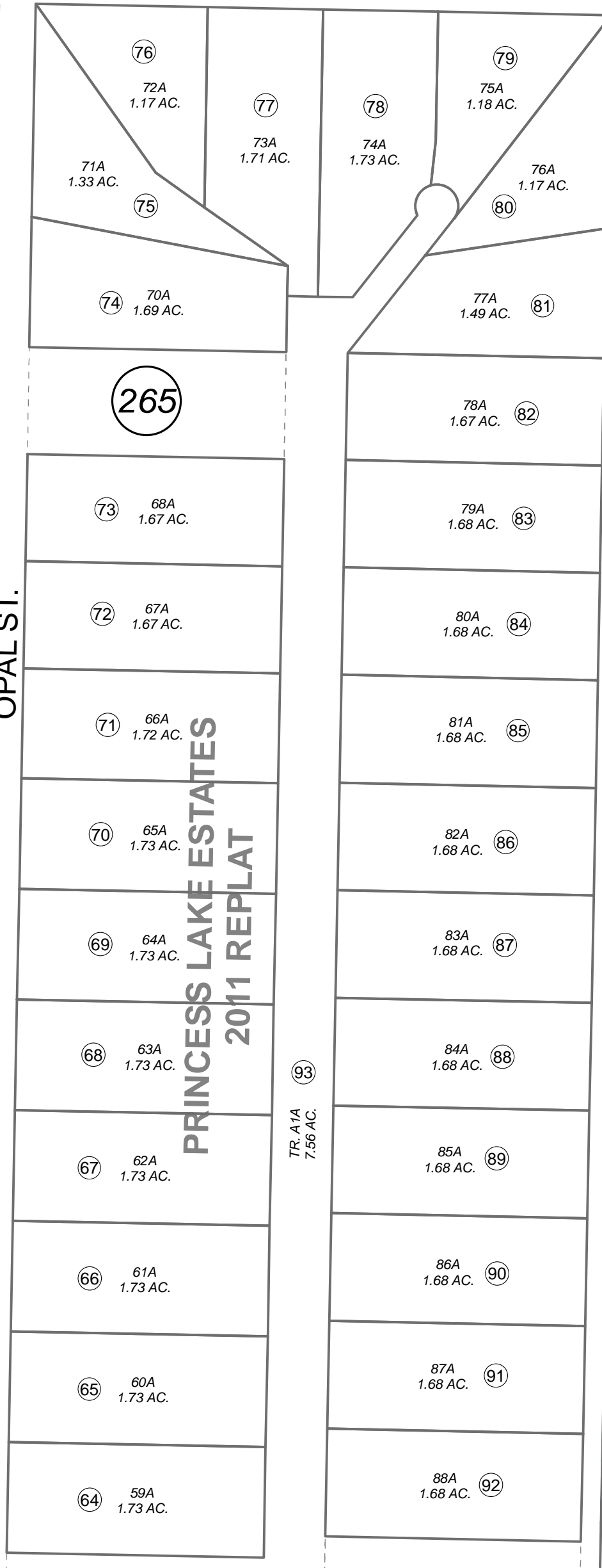
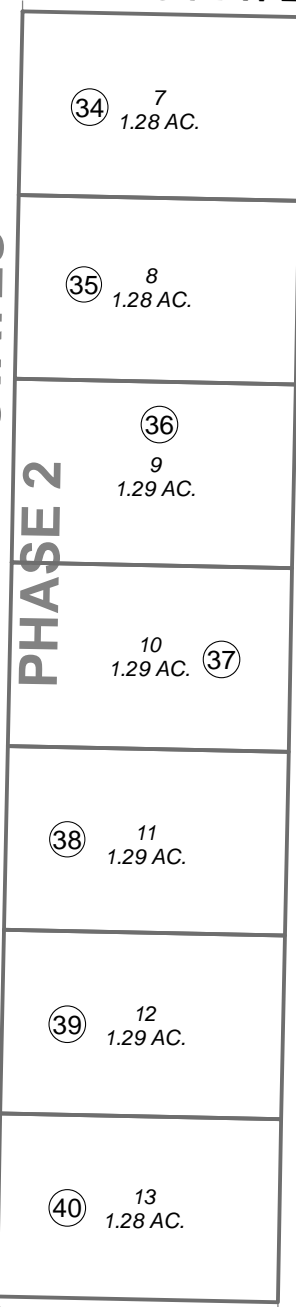
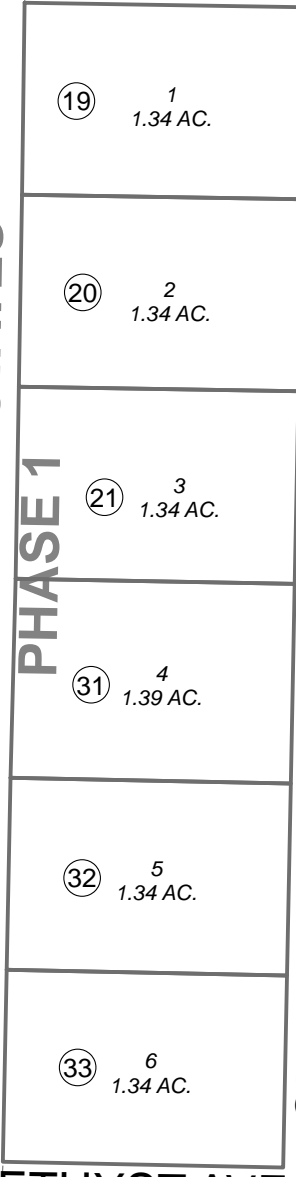
254

1 6
12 7

PRINCESS LAKE ESTATES
PHASE 1

PRINCESS LAKE ESTATES
PHASE 2

PRINCESS LAKE ESTATES
2011 REPLAT



OPAL ST.

AMETHYST AVE.

WALLERS ST.

TR. A1A
7.56 AC.

260

080

260



0 100 200 Feet

This map is prepared for Kenai Peninsula Borough Assessing Dept. use only and is not intended for conveyance nor is it a survey.

Note- Assessor's block Numbers Shown in Ellipses Assessor's Parcel Numbers Shown in Circles

Assessor's Map
Kenai Peninsula Borough