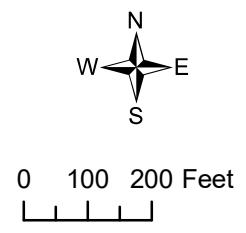
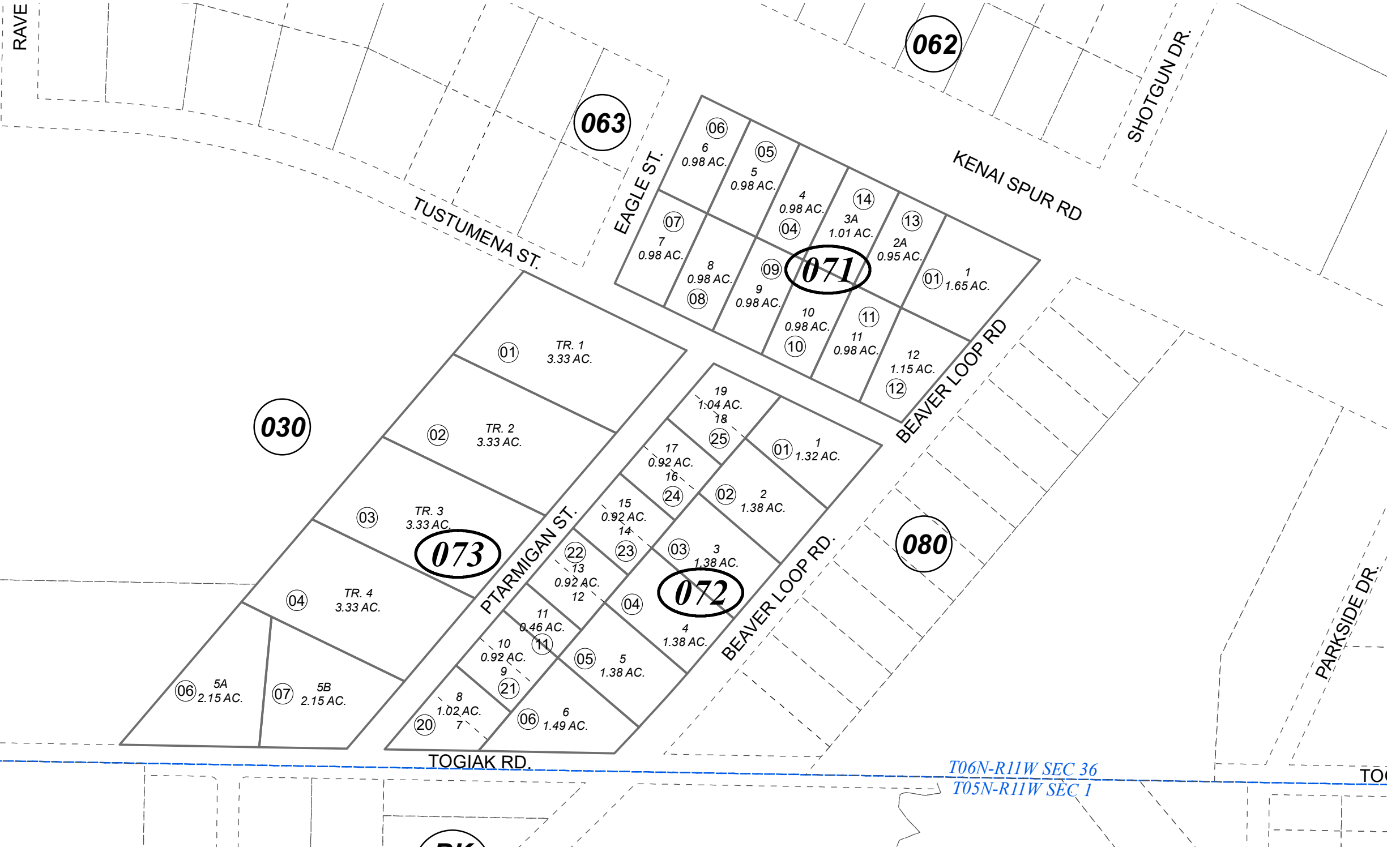


POR. SEC. 36, T06N, R11W, S.M.

041-070



DECEMBER 27, 2022

For 2023 assessment roll

Delete	Add	Revise

To

07102,	07113,
07103	07114

Assessor's Map  
Kenai Peninsula Borough

**BK**  
**049**

BEAVER CREEK ALASKA SUB AMENDED KN0810101  
 BEAVER CREEK ALASKA SUB SHERWOOD ADDN KN2007141  
 BEAVER CREEK ALASKA SUB 2020 REPLAT KN2022079

This map is prepared for Kenai Peninsula Borough Assessing Dept. use only and is not intended for conveyance nor is it a survey.

Note- Assessor's block Numbers Shown in Ellipses  
 Assessor's Parcel Numbers Shown in Circles