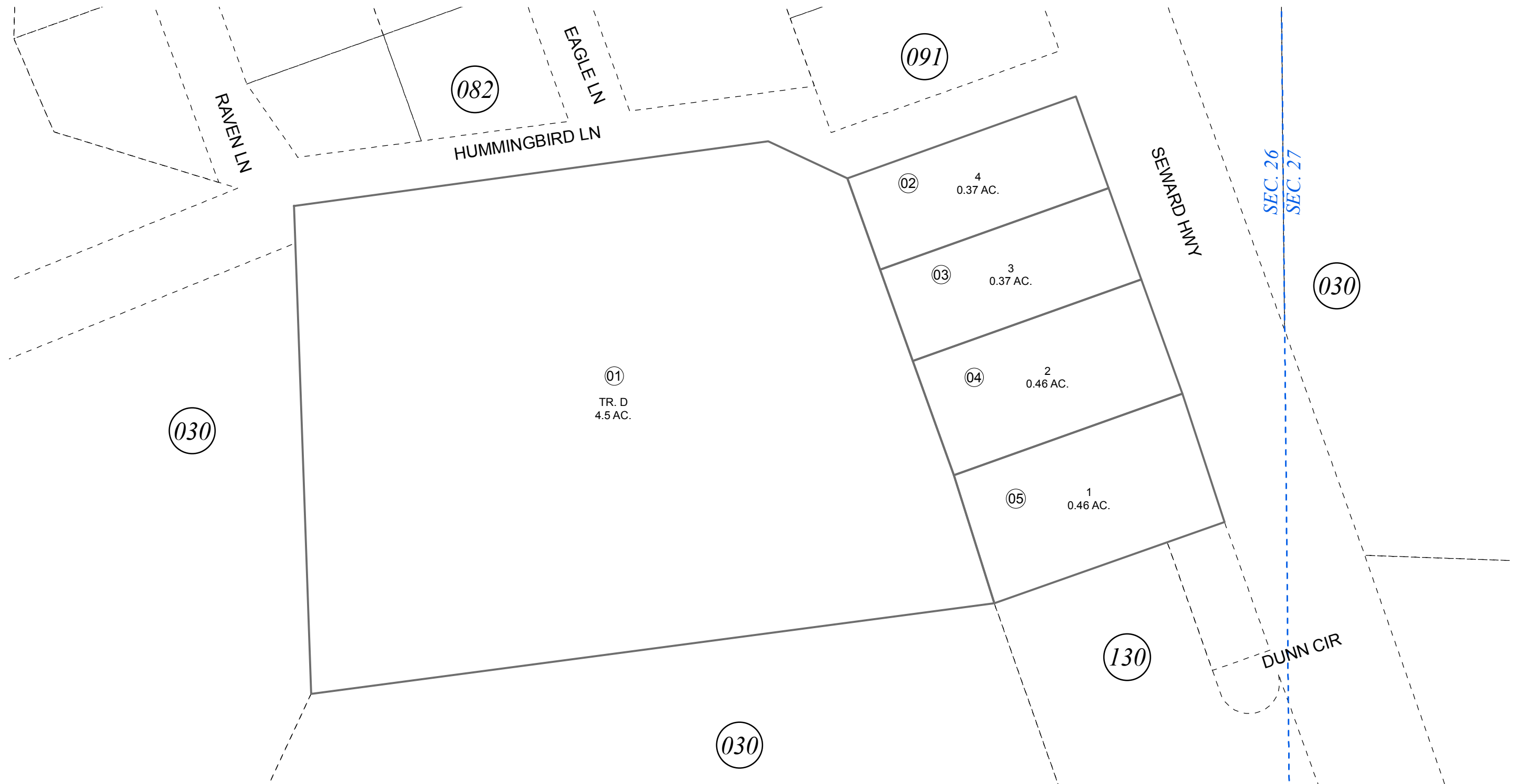


POR. SEC. 27, T01N, R01W, S.M.

144-100



JANUARY 20, 2017

For 2017 assessment roll		
Delete	Add	Revise
To		
		04,05
(ACREAGE CORRECTION)		



0 25 50 100 Feet

Assessor's Map
Kenai Peninsula Borough

FOLZ SUBD REVISED SW0000024

This map is prepared for Kenai Peninsula Borough Assessing Dept. use only and is not intended for conveyance nor is it a survey.

Note- Assessor's block Numbers Shown in Elipses
Assessor's Parcel Numbers Shown in Circles