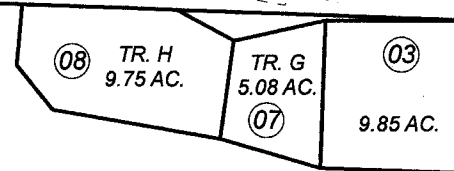


SEC. 35, 36 & POR., 25, T06N, R18W, S.M.

221-102

103



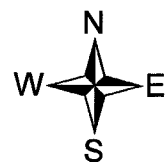
100

639.86 AC.
②

646.09 AC.
⑥

113

140



DECEMBER 31, 2008

For 2009 assessment roll

Delete	Add	Revise
To		
		6 - 8

Assessor's Map
Kenai Peninsula Borough

ALASKA STATE LAND SURVEY 86-27 AN0870065
ALASKA STATE LAND SURVEY 2005-24 AN2007138

This map is prepared for Kenai Peninsula Borough Assessing Dept. use only and is not intended for conveyance nor is it a survey.

Note- Assessor's block Numbers Shown in Elipses
Assessor's Parcel Numbers Shown in Circles