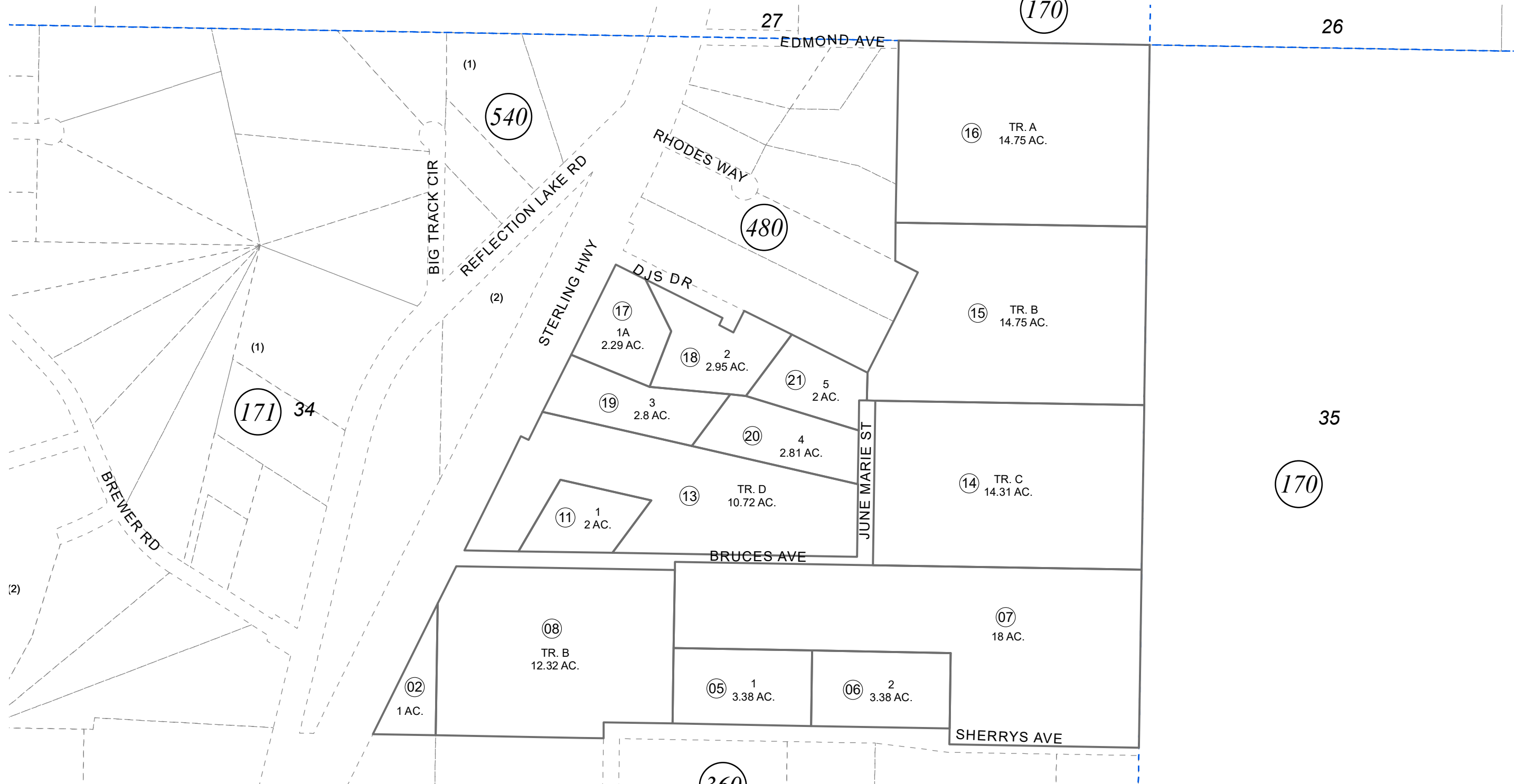
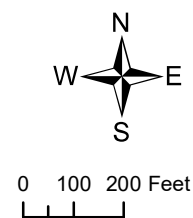


POR. NE1/4 SEC. 14, T04N, R11W, S.M.

131-700



DECEMBER 4, 2023



For 2024 assessment roll		
Delete	Add	Revise
To		
480-50,		
700-12	17-21	

Assessor's Map
Kenai Peninsula Borough

MCGUINNESS SUB NO 2 KN0820111
 MCGUINNESS SUB NO 3 KN0970087
 PLAT WAIVER RESOLUTION 98-52 KN0988513
 MALLETT HOMESTEAD NO 2 KN0990079
 MALLETT HOMESTEAD SUB NO 3 KN2023054

Note- Assessor's block Numbers Shown in Ellipses
 Assessor's Parcel Numbers Shown in Circles

This map is prepared for Kenai Peninsula Borough Assessing Dept. use only and is not intended for conveyance nor is it a survey.