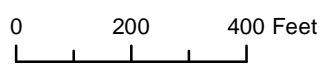
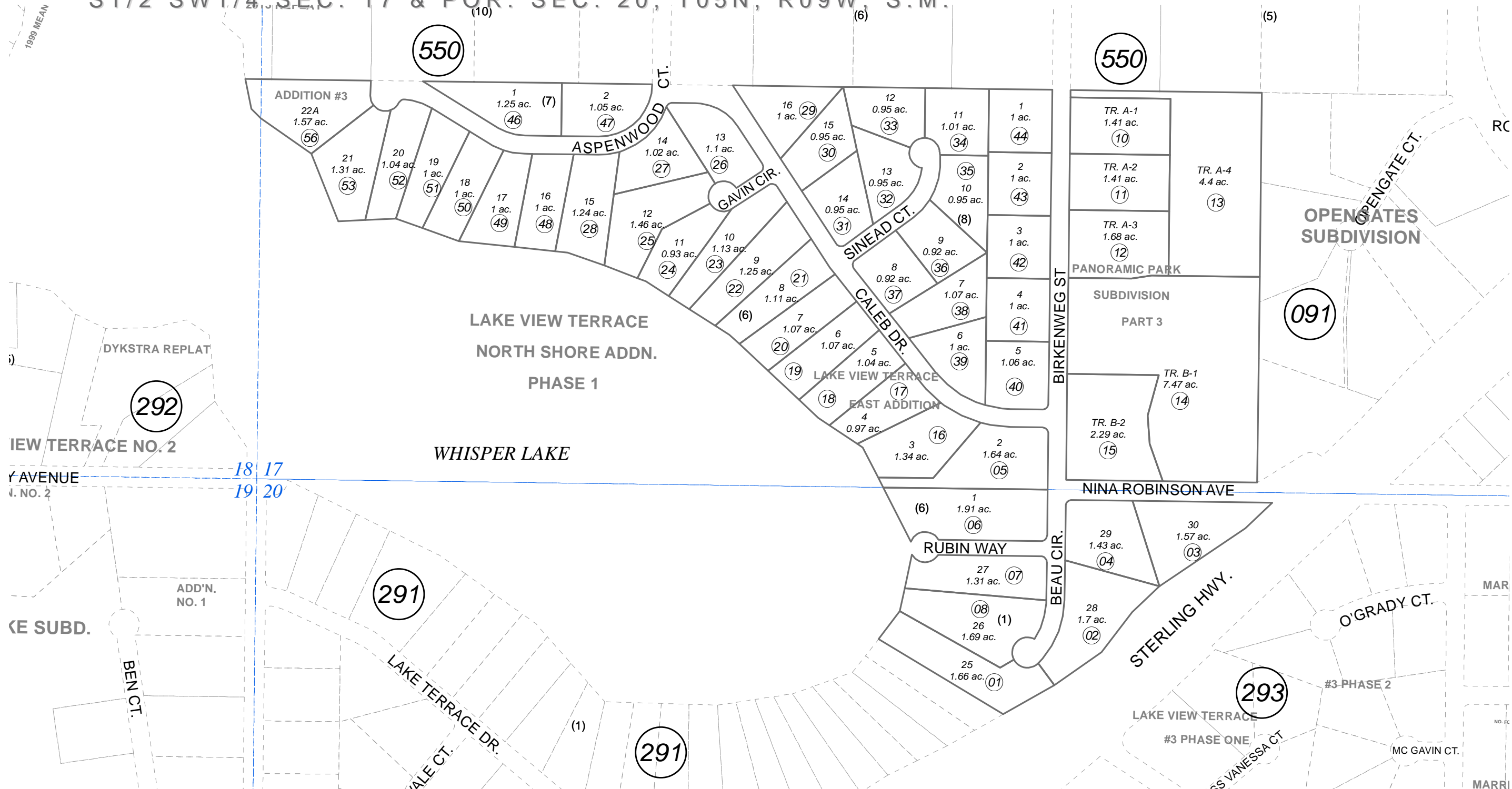


S 1/2 SW 1/4 SEC. 17 & POR. SEC. 20, T05N, R09W, S.M.

063-093



NOVEMBER 12, 2014

For 2015 assessment roll		
Delete	Add	Revise
To		
57	063-550+	

Assessor's Map  
Kenai Peninsula Borough

LAKE VIEW TERRACE SUB EAST ADDN KN0940062  
 PANORAMIC PARK SUB PART 3 KN0940069  
 LAKE VIEW TERRACE NORTH SHORE ADDN PHASE 1 KN0950055  
 LAKE VIEW TERRACE NORTH SHORE ADDN PHASE 2 KN2000033  
 LAKE VIEW TERRACE NORTH SHORE ADDN #3 KN2003042

This map is prepared for Kenai Peninsula Borough Assessing Dept. use only and is not intended for conveyance nor is it a survey.  
 Note- Assessor's block Numbers Shown in Ellipses  
 Assessor's Parcel Numbers Shown in Circles