

057-570

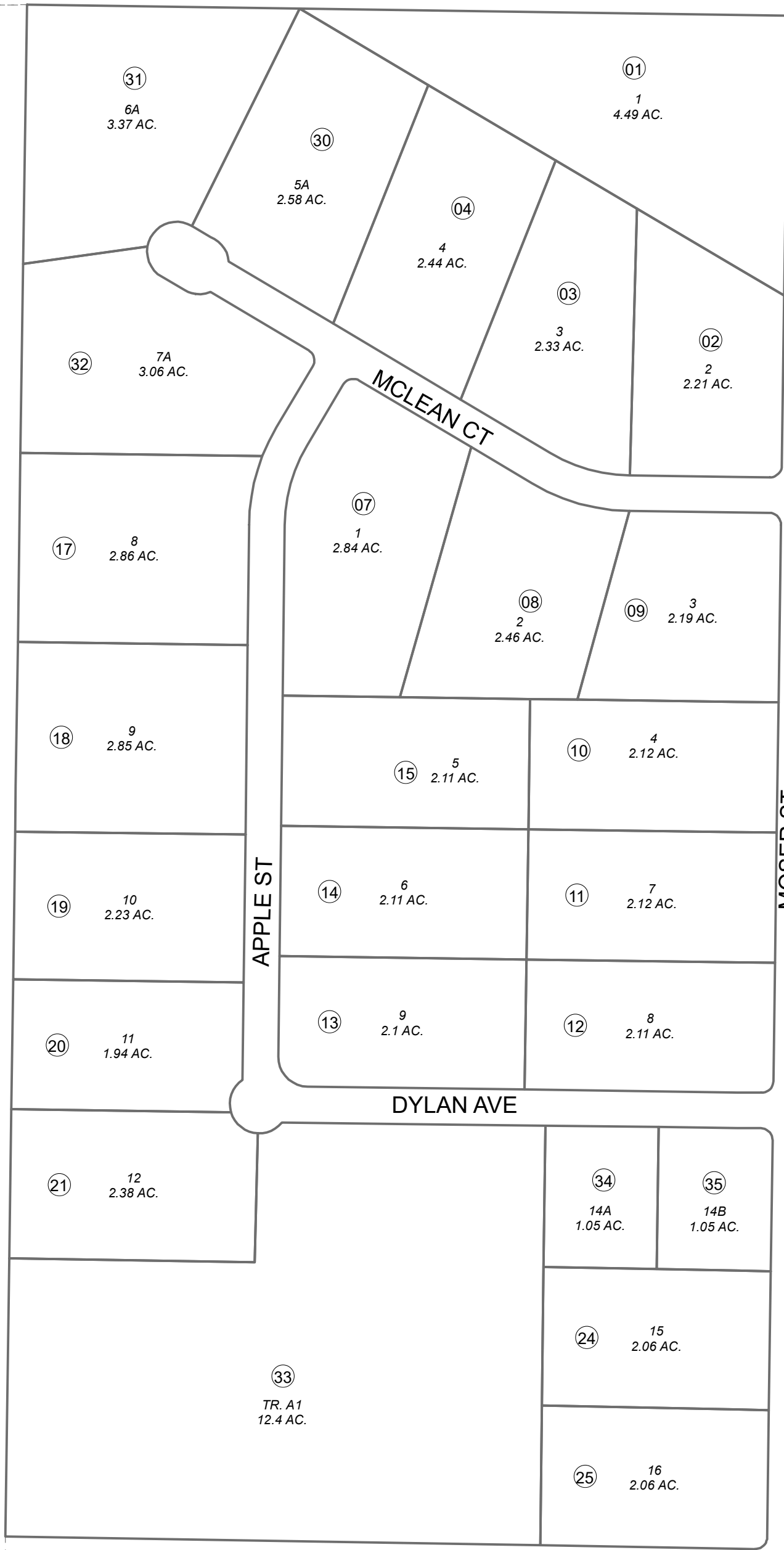
E 1/2 SE 1/4 SEC. 17, T05N, R10W, S.M.

043

043

043

411



0 100 200 Feet

SEPTEMBER 13, 2022	
For 2023 assessment roll	
Delete	Add
	Revise
To	
23	34,35

This map is prepared for Kenai Peninsula Borough Assessing Dept. use only and is not intended for conveyance nor is it a survey.

Note- Assessor's block Numbers Shown in Ellipses Assessor's Parcel Numbers Shown in Circles

HIRIDGE SUB AMENDED KN0760132  
 HIRIDGE SUB 1984 IMLE ADDN KN0840306  
 HIRIDGE SUB NO 3 KN0850210  
 HIRIDGE SUB 1984 IMLE ADDN DIXSON REPLAT KN2011089  
 HIRIDGE SUB AMENDED THOMPSON ADDN HM2022041

Assessor's Map  
 Kenai Peninsula Borough