

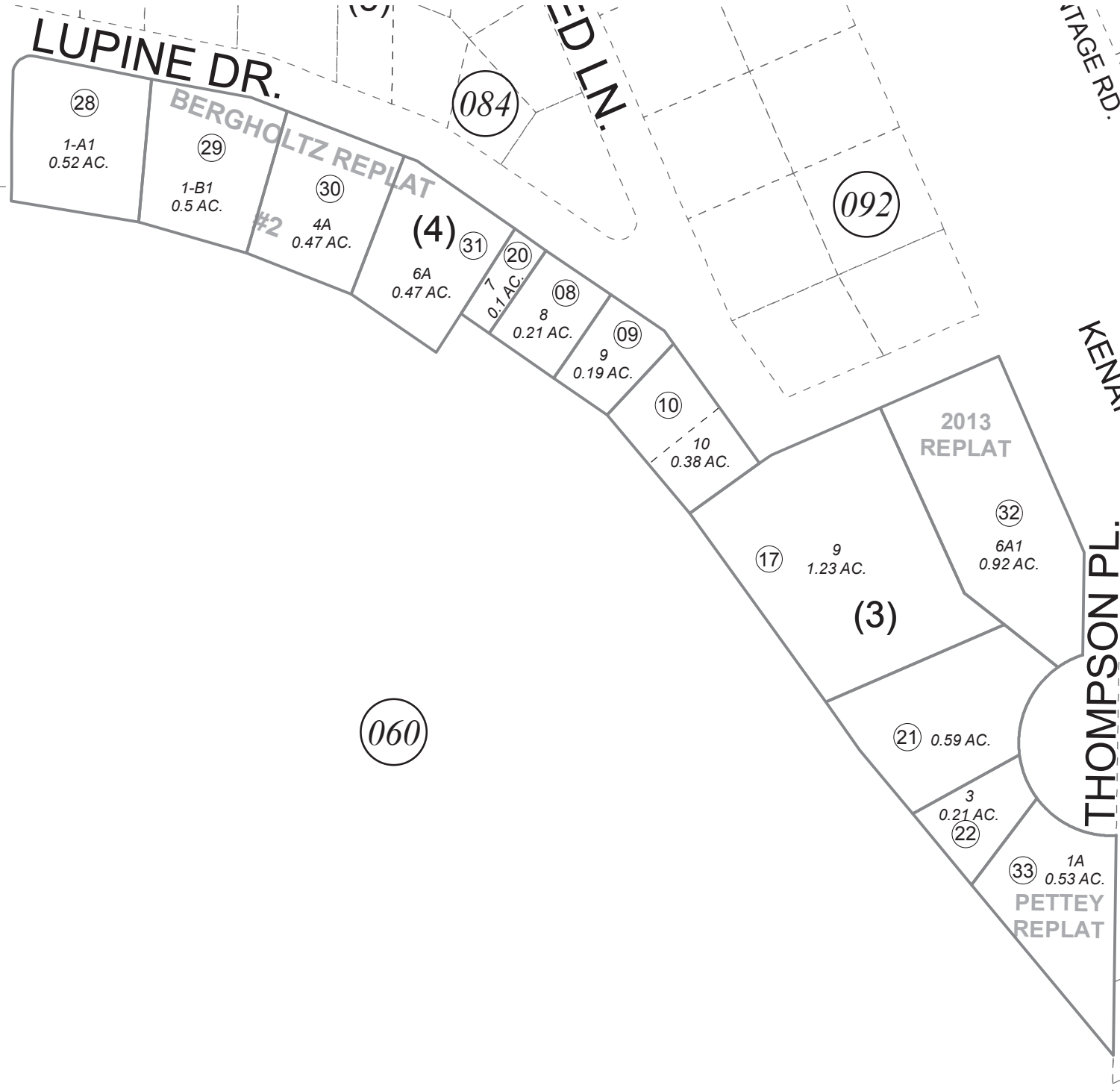
POR. SEC. 6, T05N, R10W, S.M.

049-070

5)

280

RS REPLAT
NO. 2



DECEMBER 5, 2017

For 2017 assessment roll		
Delete	Add	Revise
To		
16	33	

Assessor's Map
Kenai Peninsula Borough

THOMPSON PARK SUB KN0001047
 THOMPSON PARK SUB OF LOT 5 BLOCK 3 KN0720016
 THOMPSON PARK SUB RESUB OF LOTS 1 & 2 & KN0770007
 THOMPSON PARK ONE STOP REPLAT KN2000019
 THOMPSON PARK BERGHOLTZ REPLAT #2 KN2009087
 THOMPSON PARK 2013 REPLAT KN2014082
 THOMPSON PARK SUB PETTEY REPLAT KN2017063

Note- Assessor's block Numbers Shown in Elipses
 Assessor's Parcel Numbers Shown in Circles

This map is prepared
 for Kenai Peninsula
 Borough Assessing Dept.
 use only and is not
 intended for conveyance
 nor is it a survey.



0 50 100 200 Feet