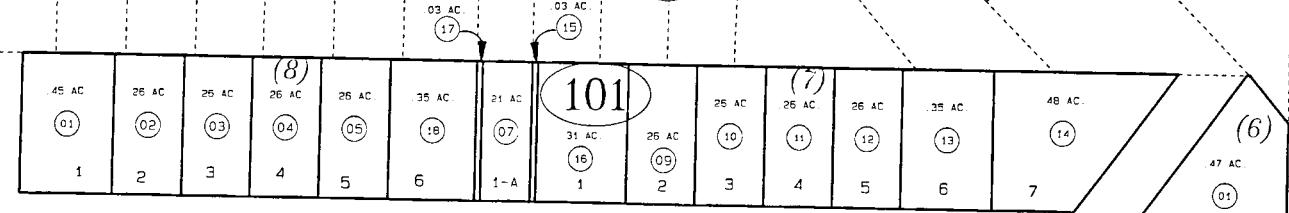


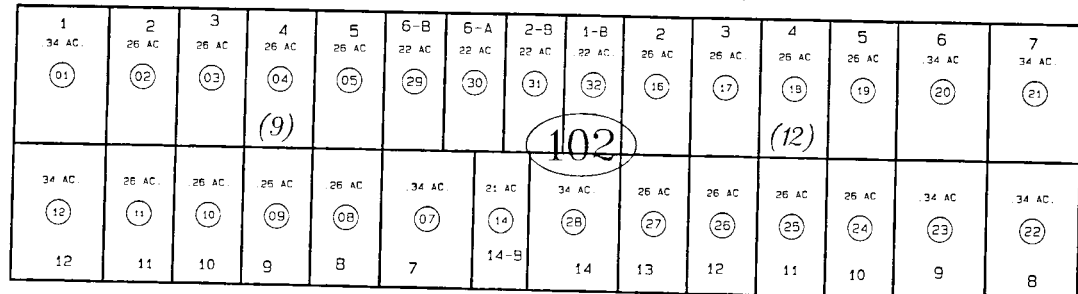
PORTION OF SEC. 25, T6N, R12W, SEWARD MERIDIAN

039-100

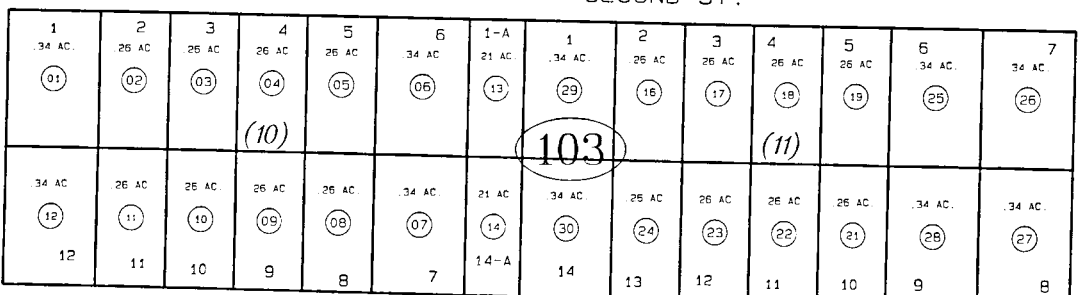
6



FIRST ST.



SECOND ST.



THIRD ST.

MOMMSEN'S ADD'N. NO. 2

11

12

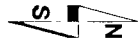
FLORIDA AVE.

CALIFORNIA AVE.

BK  
17

DATE: FEB. 5, 1997

FOR 19 97 ASSESSMENT ROLL		
DELETE	ADD	REVISED
TO		
03910315	03910329	
	03910330	



Assessor's Map  
Kenai Peninsula Borough

MOMMSENS SUB ADDN NO. 2 KN001355  
MOMMSENS SUB ADDN NO 2 AMENDED KN780215

THIS MAP IS PREPARED FOR KENAI PENINSULA BOROUGH ASSESSING DEPT. USE ONLY AND IS NOT INTENDED FOR ANY OTHER USE OR REPRESENTATION

NOTE - Assessor's Block Numbers Shown In Ellipses Assessor's Parcel Numbers Shown In Circles