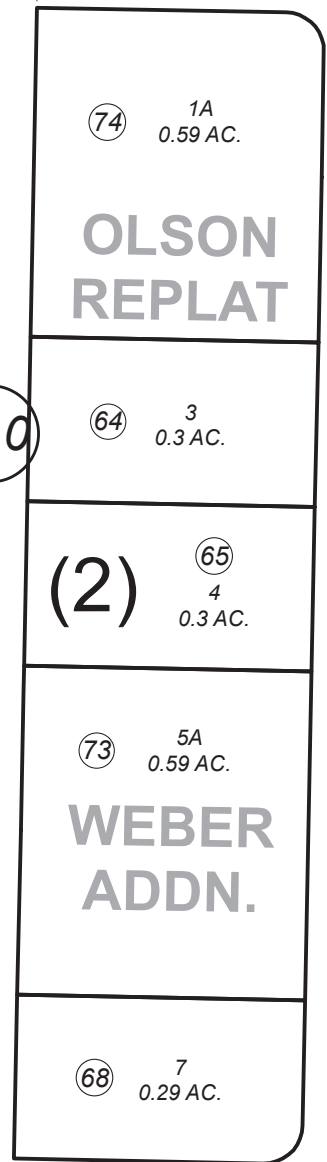


020

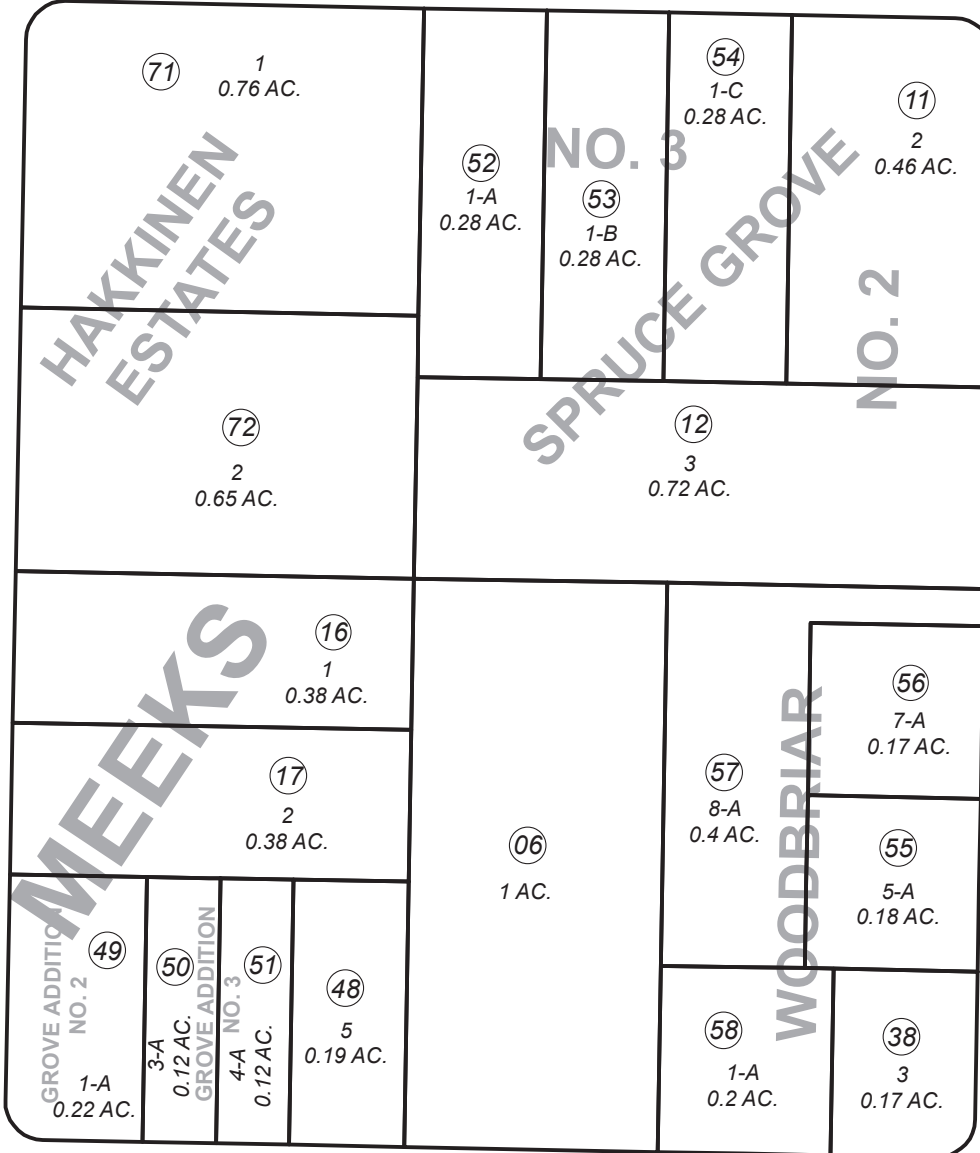
010

070

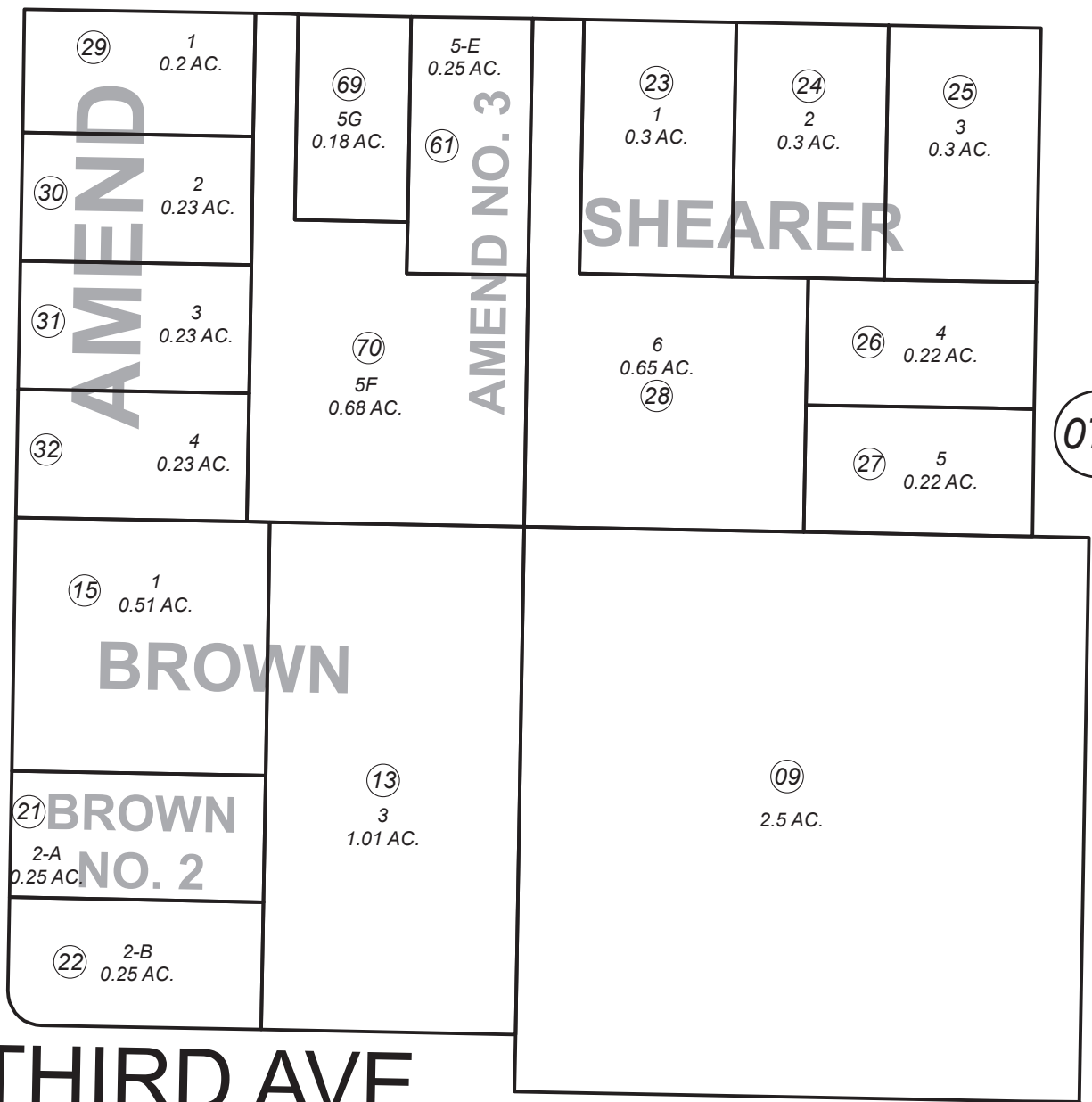
100



EVERGREEN ST.



HALLER ST.



THIRD AVE.



0 50 100 Feet

OCTOBER 26, 2016

For 2017 assessment roll		
Delete	Add	Revise
	To	
62,63	74	

Assessor's Map
Kenai Peninsula Borough

- SPRUCE GROVE-SUB.NO 2 KN 0780138
- BROWN SUB KN 0780158
- MEEKS SUB KN 0830045
- BROWN SUB NO 2 KN 0830132
- AMEND SUB KN 0830178
- SHEARER SUB KN 0830209
- MEEKS SUB EVERGREEN GROVE ADDN KN 0840162
- WOODBRIAR SUB KN 0840163
- MEEKS SUB EVERGREEN GROVE ADDN NO 2 KN 0840319
- MEEKS SUB EVERGREEN GROVE ADDN NO 3 KN 0840320
- SPRUCE GROVE SUB NO 3 KN 0850057
- WOODBRIAR SUB NO 2 KN 0850096
- WOODBRIAR SUB NO 3 KN 0860009
- AMEND SUB NO 3 KN 0870036
- EVERGREEN SUB KIM ADDN KN 0940006
- AMEND SUB NO 4 KN 0940064
- HAKKINEN ESTATES SUB KN 0960012
- EVERGREEN SUB WEBER ADDN KN 2006008
- EVERGREEN SUB KIM ADDN OLSON REPLAT KN2016059

This map is prepared for Kenai Peninsula Borough Assessing Dept. use only and is not intended for conveyance nor is it a survey.
Note- Assessor's block Numbers Shown in Ellipses
Assessor's Parcel Numbers Shown in Circles