

T03S, R23W, R24W, S.M.

231-070

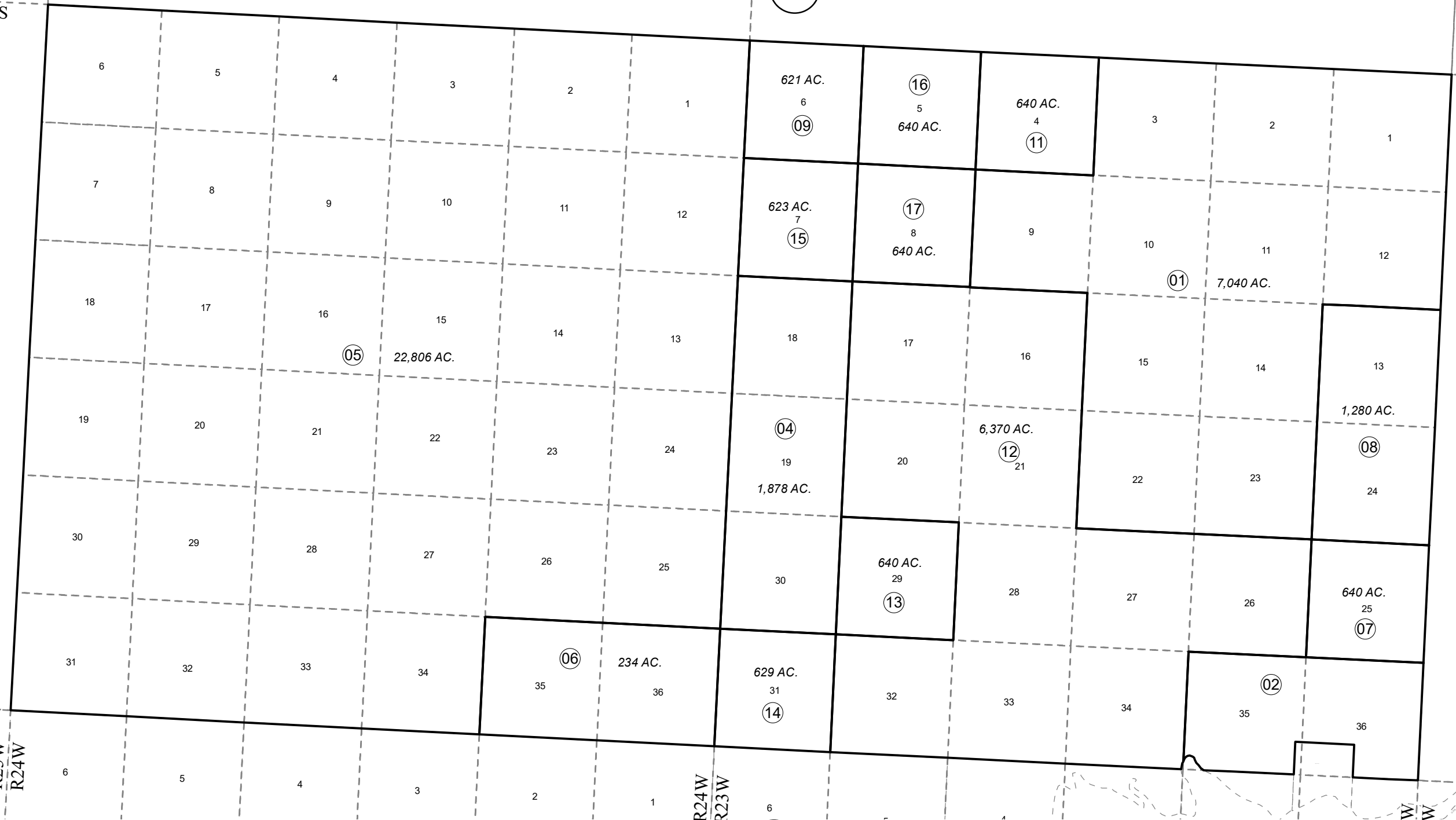
T02S  
T03S

220

080

040

100



FEBRUARY 1, 2022

For 2022 assessment roll		
Delete	Add	Revise
To		
10	16,17	



0 2,000 4,000 Feet

Assessor's Map  
Kenai Peninsula Borough

This map is prepared for Kenai Peninsula Borough Assessing Dept. use only and is not intended for conveyance nor is it a survey.

Note- Assessor's block Numbers Shown in Elipses  
Assessor's Parcel Numbers Shown in Circles