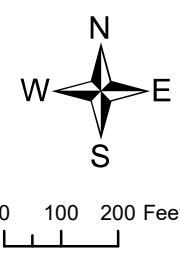
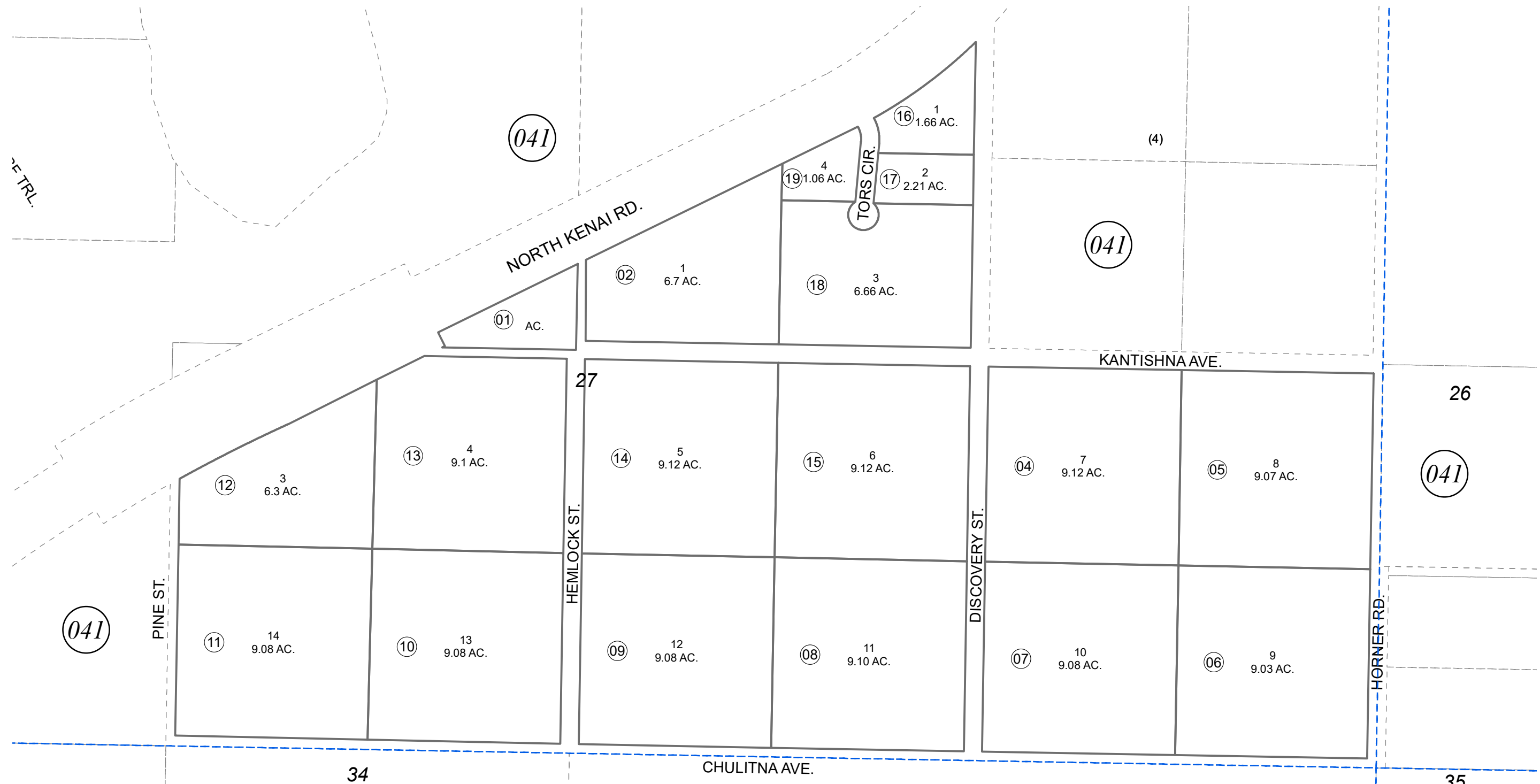


POR. S1/2 SEC. 27, T08N, R11W, S.M.

013-290



JUNE 2, 2023

For 2024 assessment roll		
Delete	Add	Revise
To		08
(ACREAGE REVISION)		

Assessor's Map  
Kenai Peninsula Borough

NIKISHKA BAY WOODS SUB KN0740012  
RECORD OF SURVEY KN2023005

Note- Assessor's block Numbers Shown in Ellipses  
Assessor's Parcel Numbers Shown in Circles

This map is prepared for Kenai Peninsula Borough Assessing Dept. use only and is not intended for conveyance nor is it a survey.