

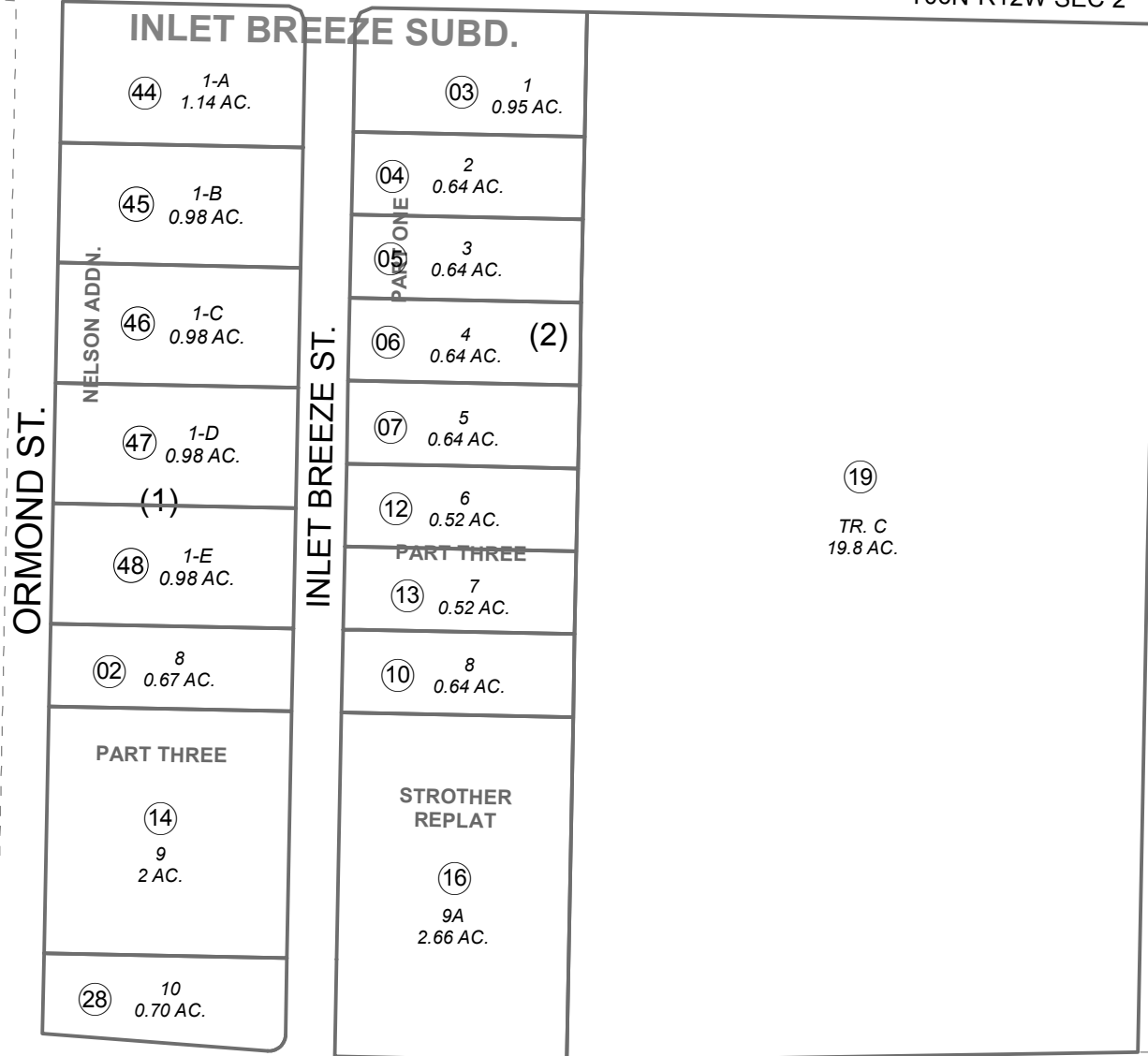
017-255

POR. W1/2 NE1/4 SEC. 2, T06N, R12W, S.M.

BK 015

MILLER LOOP RD.

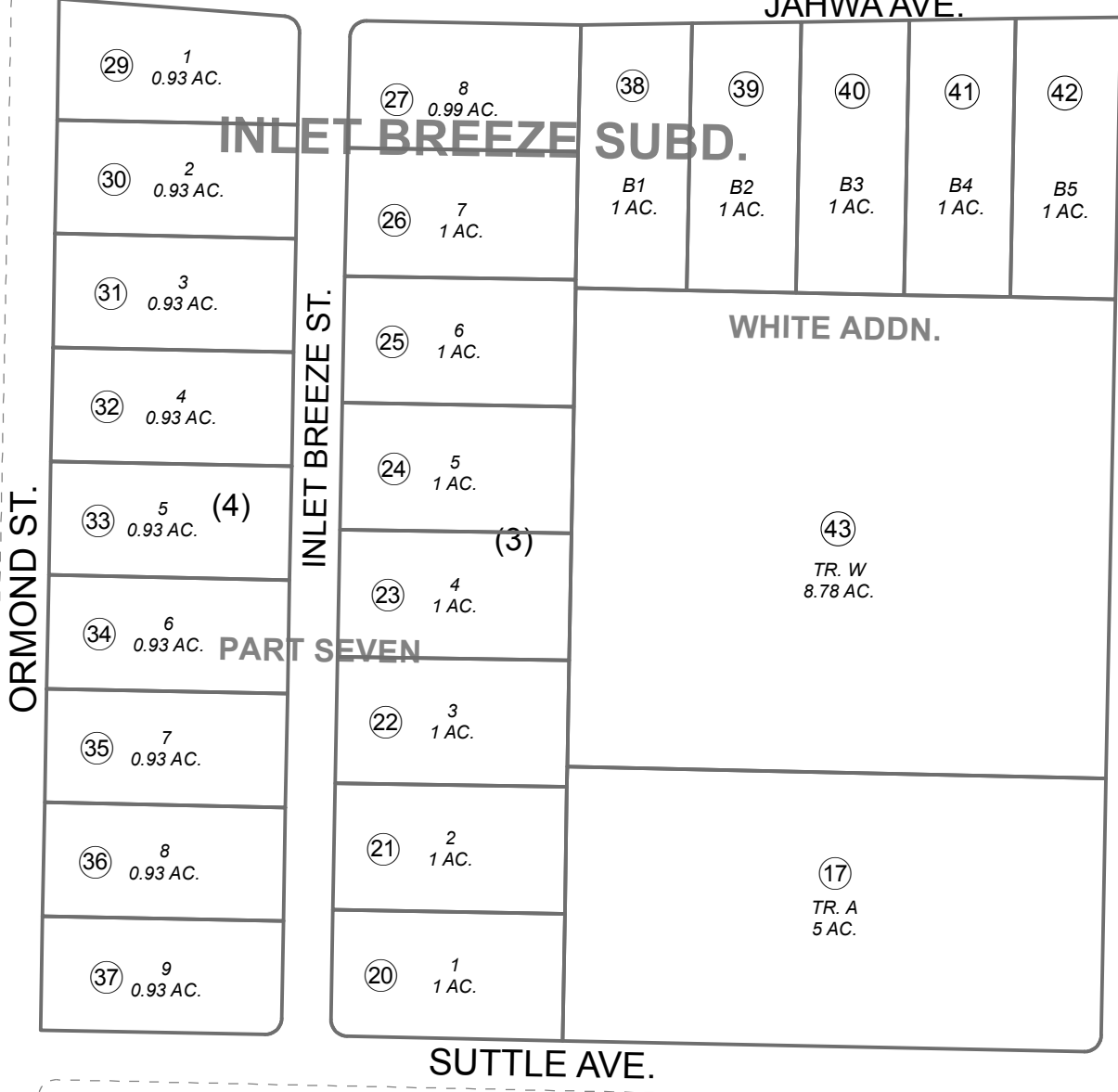
T07N-R12W SEC 35
T06N-R12W SEC 2



030

250

JAHWA AVE.



ORMOND ST.

INLET BREEZE ST.

CLAUDE ST.

SUTTLE AVE.

252

This map is prepared for Kenai Peninsula Borough Assessing Dept. use only and is not intended for conveyance nor is it a survey.

Note- Assessor's block Numbers Shown in Ellipses Assessor's Parcel Numbers Shown in Circles

INLET BREEZE SUB PART ONE KN2001093
INLET BREEZE SUB PART THREE KN2004079
INLET BREEZE SUB STROTH REPLAT KN2009092
INLET BREEZE SUB PART SEVEN KN2013052
INLET BREEZE SUB WHITE ADDN KN2014069
INLET BREEZE SUB NELSON ADDN KN2017022

Assessor's Map Kenai Peninsula Borough



0 50 100 200 Feet

MAY 23, 2017

For 2018 assessment roll	
Delete	Add
	Revise
To	
01	44-48