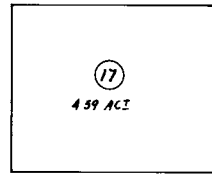


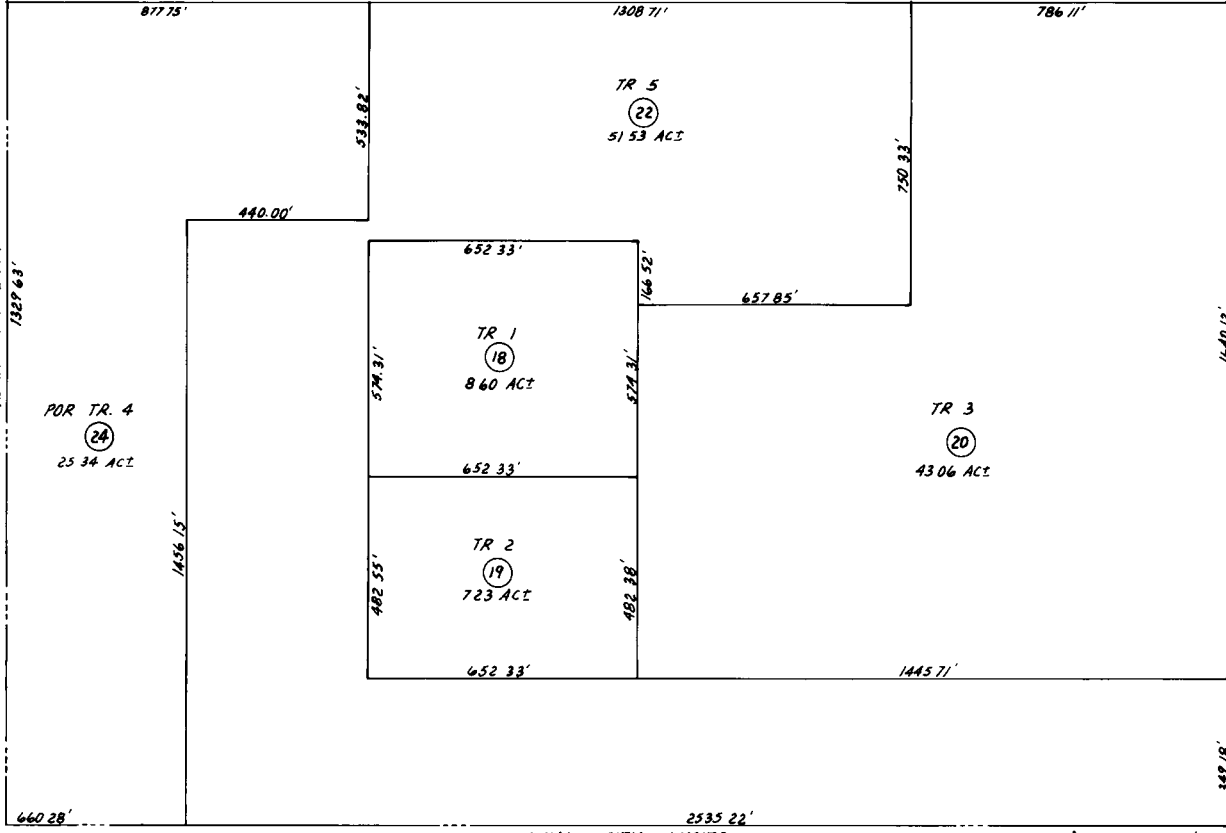
23 24  
26 25

20

24 19  
25 30



UNSUBDIVIDED  
23  
39.97 AC±



BK  
039  
010  
PG

KENAI CITY LIMITS

23  
WILLOWOOD CORRECTIONS KN92-73

KENAI CITY LIMITS

Assessor's Map  
Kenai Peninsula Borough, Alaska

BK  
039  
010  
PG

NOTE - Assessor's Block Numbers Shown in Ellipses  
Assessor's Parcel Numbers Shown in Circles