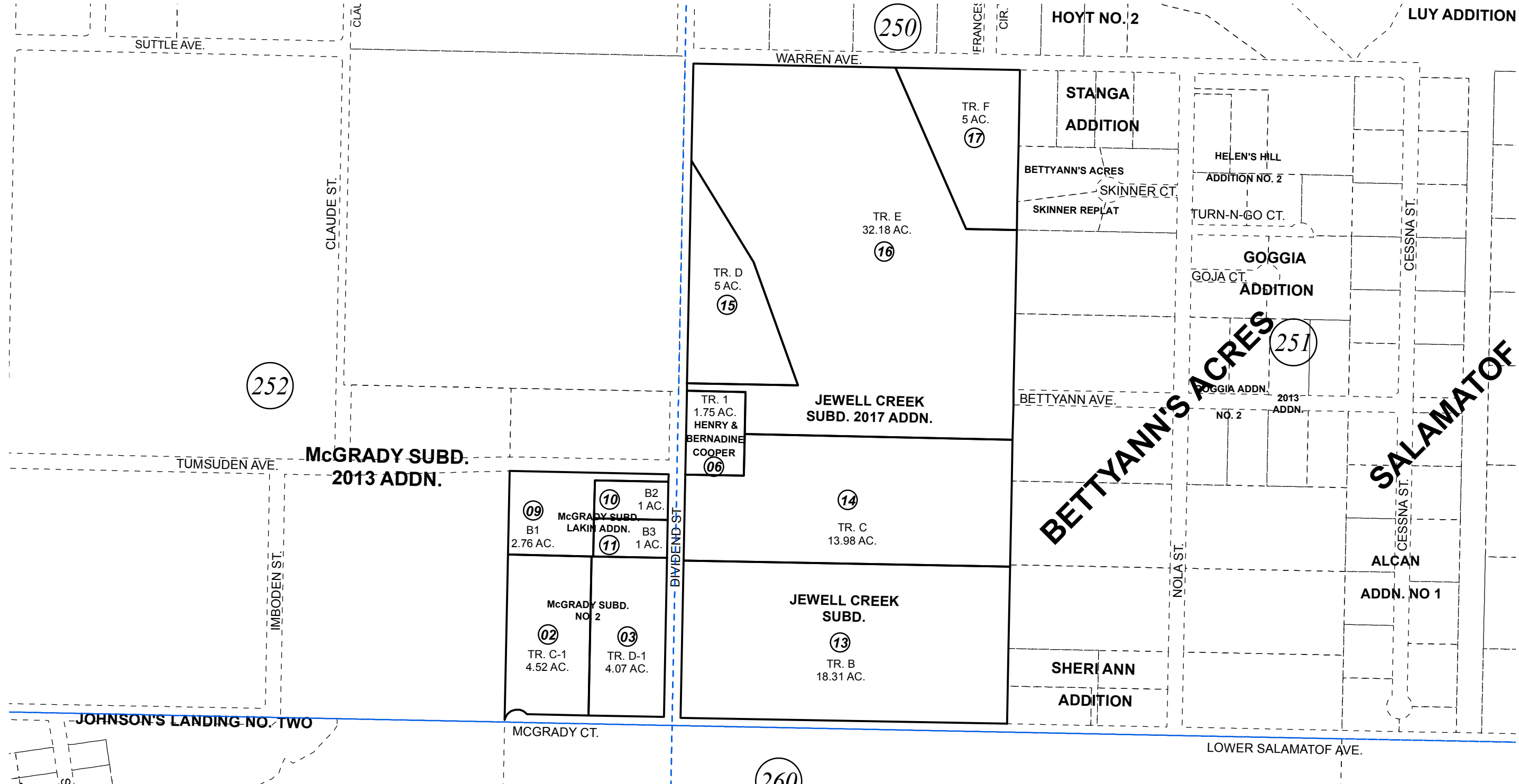


SW 1/4 SW 1/4 SEC. 1 & E 1/2 SE 1/4 SEC. 2, T06N, R12W, S.M.

017-320



252

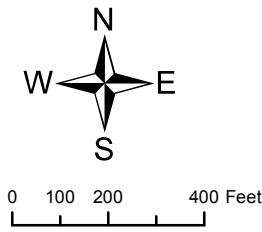
250

251

260

MAY 5, 2017

For 2018 assessment roll		
Delete	Add	Revise
	To	
12	14-17	



Assessor's Map
Kenai Peninsula Borough

MCGRADY SUB KN0750088
 MCGRADY SUB NO 2 KN0790094
 HENRY & BERNADINE COOPER SUB KN0830150
 MCGRADY SUB LAKIN ADDN KN2010022
 JEWELL CREEK SUB KN2015064
 JEWELL CREEK SUB 2017 ADDN KN2017019

This map is prepared for Kenai Peninsula Borough Assessing Dept. use only and is not intended for conveyance nor is it a survey.
 Note- Assessor's block Numbers Shown in Elipses
 Assessor's Parcel Numbers Shown in Circles