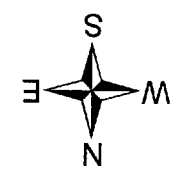


POR. SEC. 26, T07N, R12W, S.M.

015-201



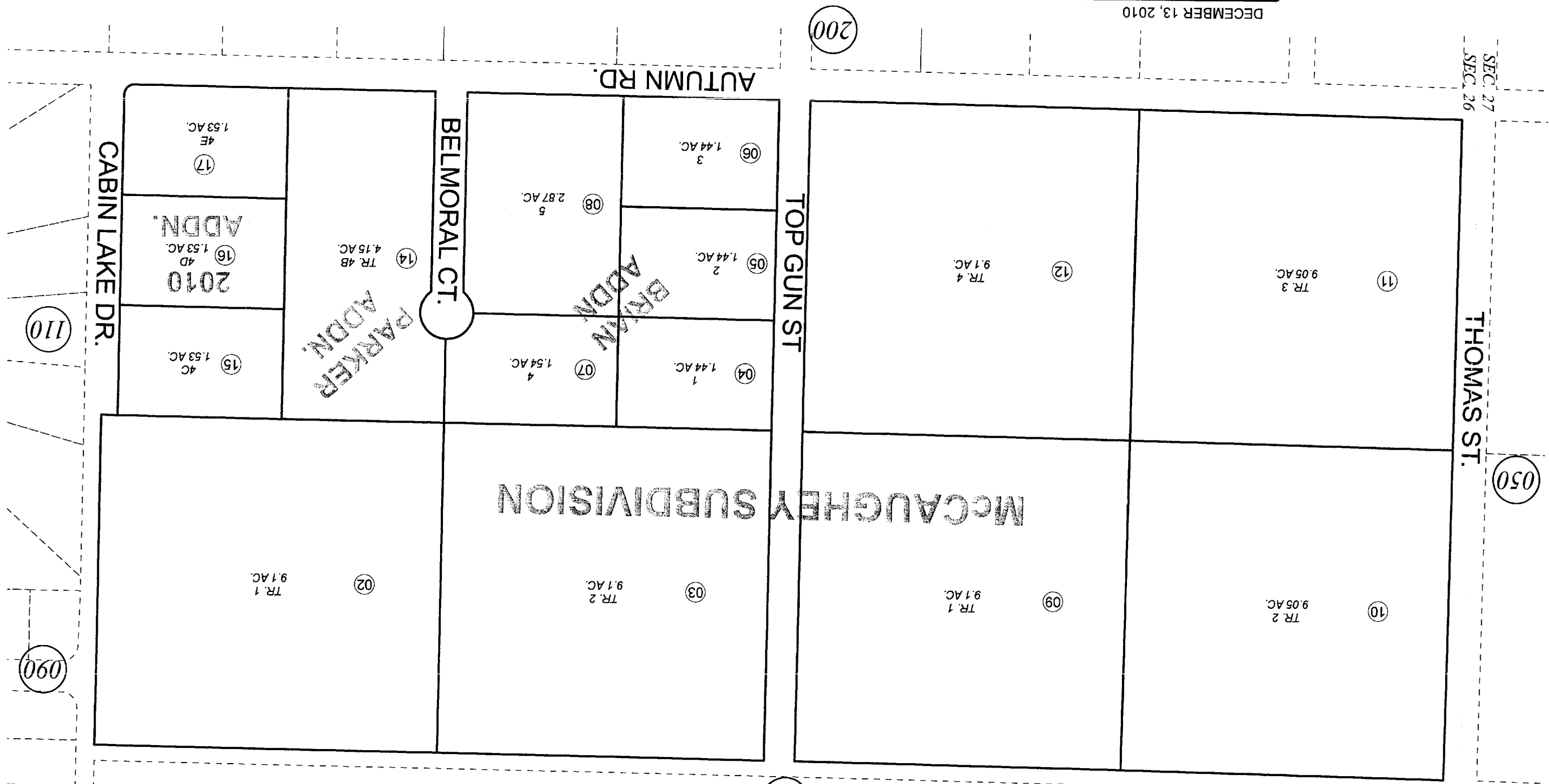
For 2011 assessment roll	
Delete	Add
Revise	
To	
13	15-17

DECEMBER 13, 2010

Assessor's Map
Kenai Peninsula Borough

MCCAUGHEY SUB KN0750125
MCCAUGHEY SUB BRIAN ADDN KN0830161
MCCAUGHEY SUB PARKER ADDN KN2000004
MCCAUGHEY SUB 2010 ADDN KN2010071

This map is prepared for Kenai Peninsula Borough Assessing Dept. use only and is not intended for conveyance nor is it a survey.
Note- Assessor's block Numbers Shown in Ellipses
Assessor's Parcel Numbers Shown in Circles



150

050

SEC. 27
SEC. 26

200

110

090