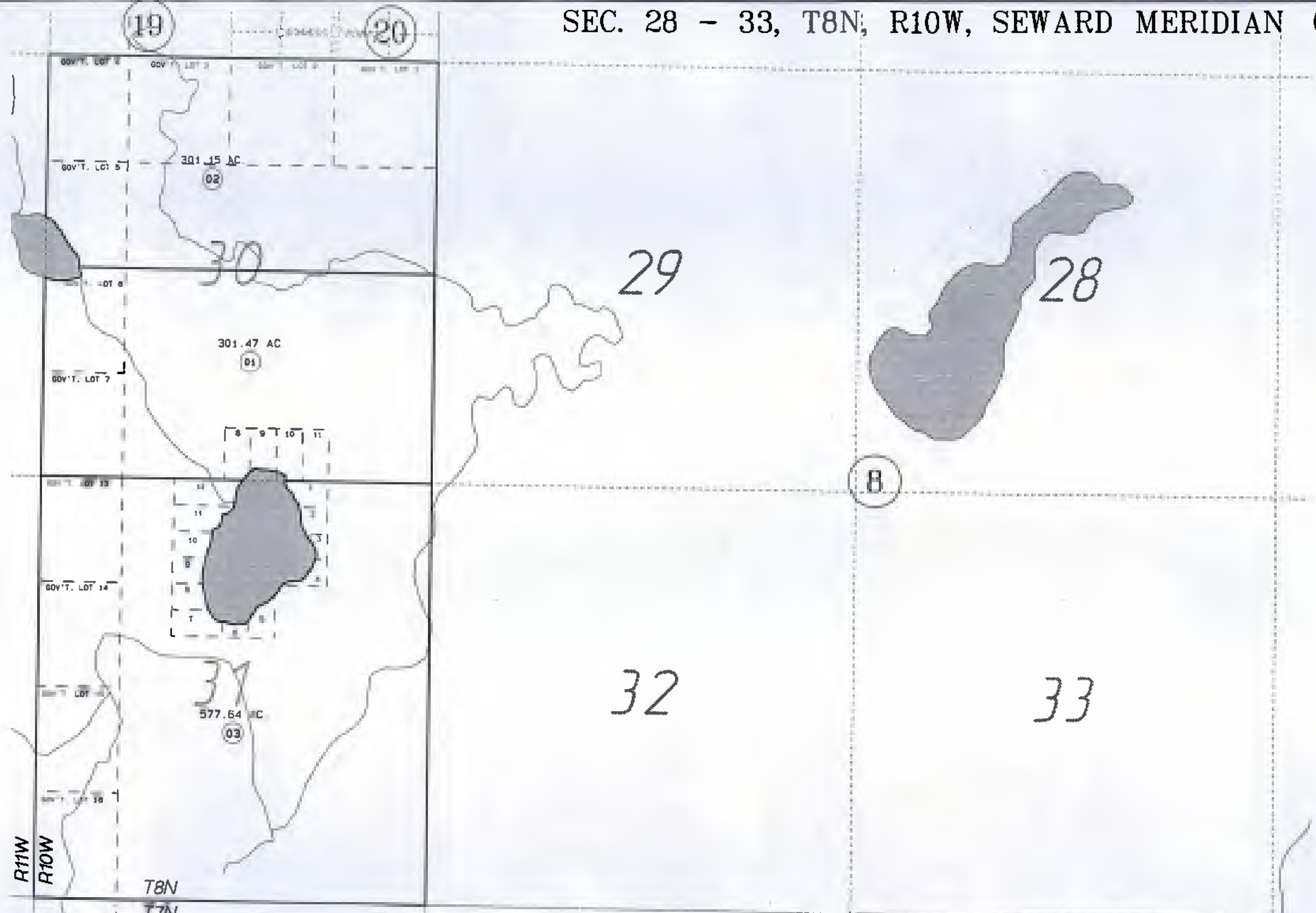


SEC. 28 - 33, T8N, R10W, SEWARD MERIDIAN 025-210



BK  
13

DATE FEB 22, 1996

FOR 1996 ASSESSMENT ROLL
DELETE    ADD    REVISED
TD
3

Assessor's Map  
Kenai Peninsula Borough

THIS MAP IS PREPARED FOR KENAI PENINSULA BOROUGH ASSESSING DEPT. USE ONLY AND IS NOT INTENDED FOR ANY OTHER USE OR REPRESENTATION

NOTE - Assessor's Block Numbers Shown in Ellipses  
Assessor's Parcel Numbers Shown in Circles