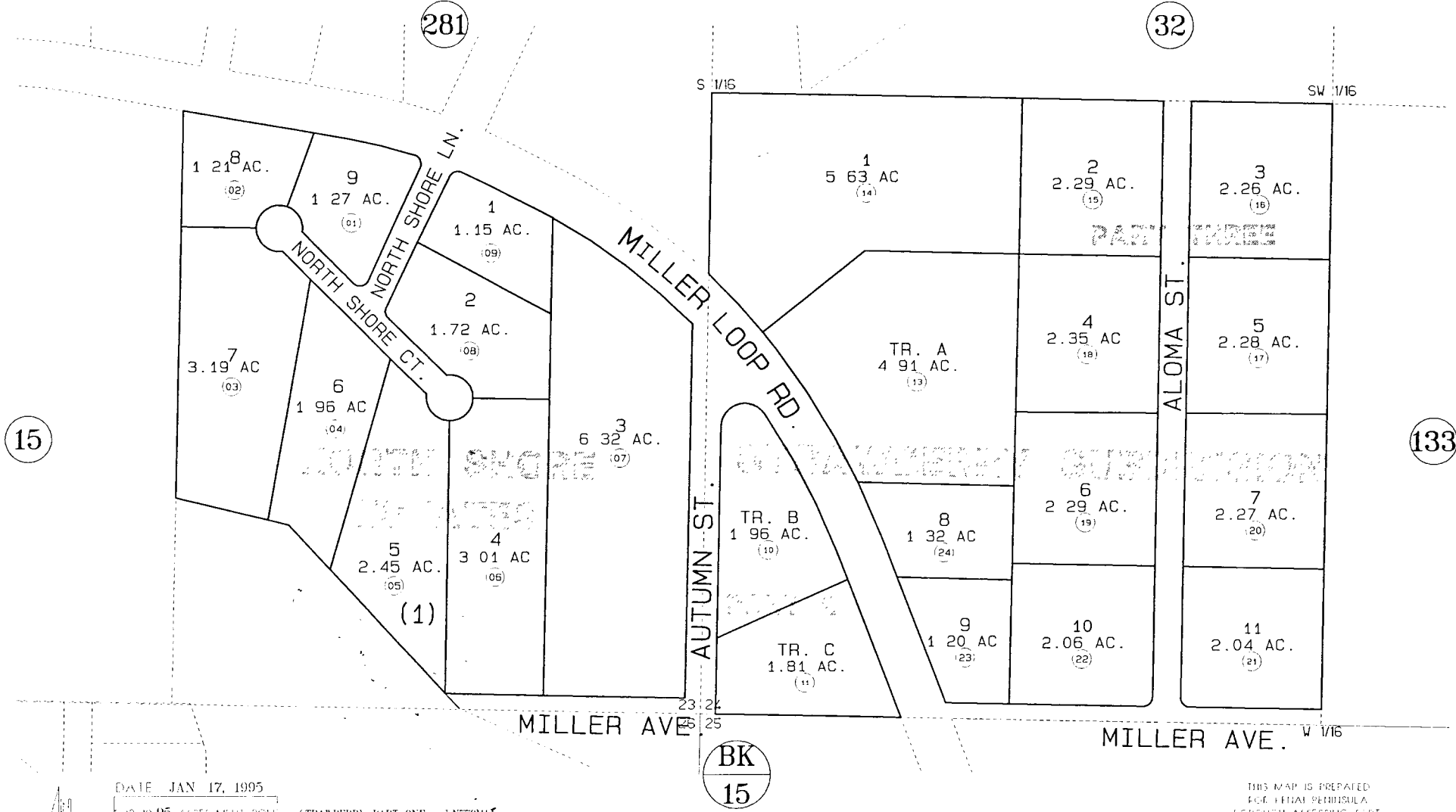


POR. LOT 1, SEC. 23 & SW1/4 SW1/4 SEC. 24, T7N, R12W, SEWARD MERIDIAN 014-270



DATE JAN 17, 1995

NO.	1995 ASSESSMENT ROLL	DELETE	ADD	REVIEW
12				11-21

STRAWBERRY PART ONE KN770011
 NORTH SHORE ESTATES KN780015
 STRAWBERRY PART TWO KN800021
 STRAWBERRY PART THREE KN910007
 Assessor's Map
 Kenai Peninsula Borough

THIS MAP IS PREPARED FOR KENAI PENINSULA BOROUGH ASSESSING DEPT. USE ONLY AND IS NOT INTENDED FOR ANY OTHER USE OR REPRESENTATION.

NOTE - Assessor's Block Numbers Shown In Ellipses
 Assessor's Parcel Numbers Shown In Circles