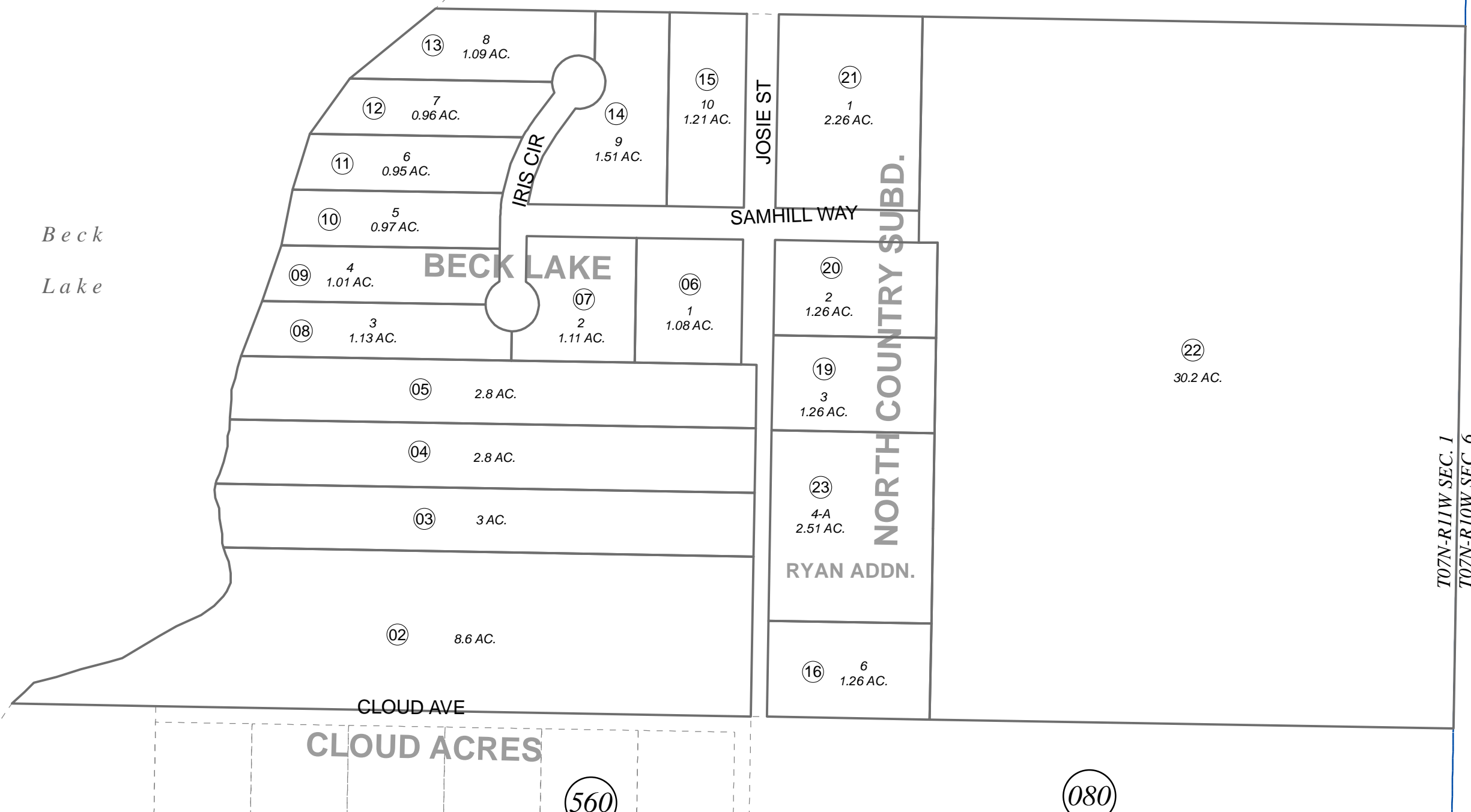


S1/2 NE1/4 SEC. 1, T07N, R11W, S.M.

013-480



0 50 100 200 Feet

MAY 7, 2012

For 2013 assessment roll		
Delete	Add	Revise
To		
17,18	23	

Assessor's Map
Kenai Peninsula Borough

BECK LAKE SUB KN0790100
NORTH COUNTRY SUB KN0860043
NORTH COUNTRY SUB RYAN ADDN KN2012008

Note- Assessor's block Numbers Shown in Elipses
Assessor's Parcel Numbers Shown in Circles

T07N-R11W SEC. 1
T07N-R10W SEC. 6

BK
025

080

560

080