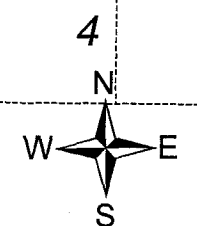
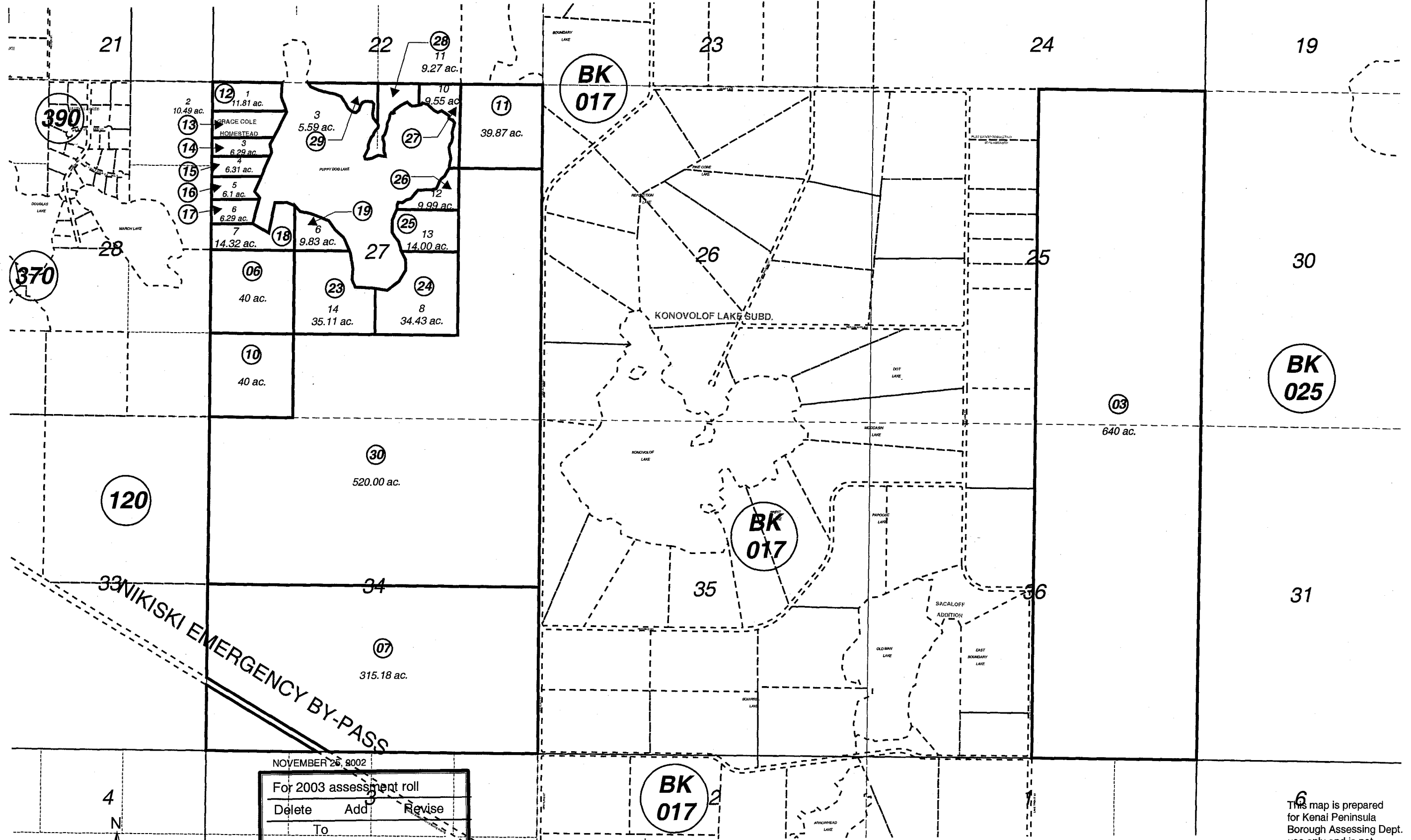


SEC. 25-27 & 34-36, T07N, R11W, S.M.

013-130



NOVEMBER 26, 2002

For 2003 assessment roll		
Delete	Add	Revise
To		
20-22	23-30	

Assessor's Map
Kenai Peninsula Borough

GRACE COLE HOMESTEAD KN0910021

This map is prepared for Kenai Peninsula Borough Assessing Dept. use only and is not intended for conveyance nor is it a survey.
Note- Assessor's block Numbers Shown in Ellipses
Assessor's Parcel Numbers Shown in Circles