

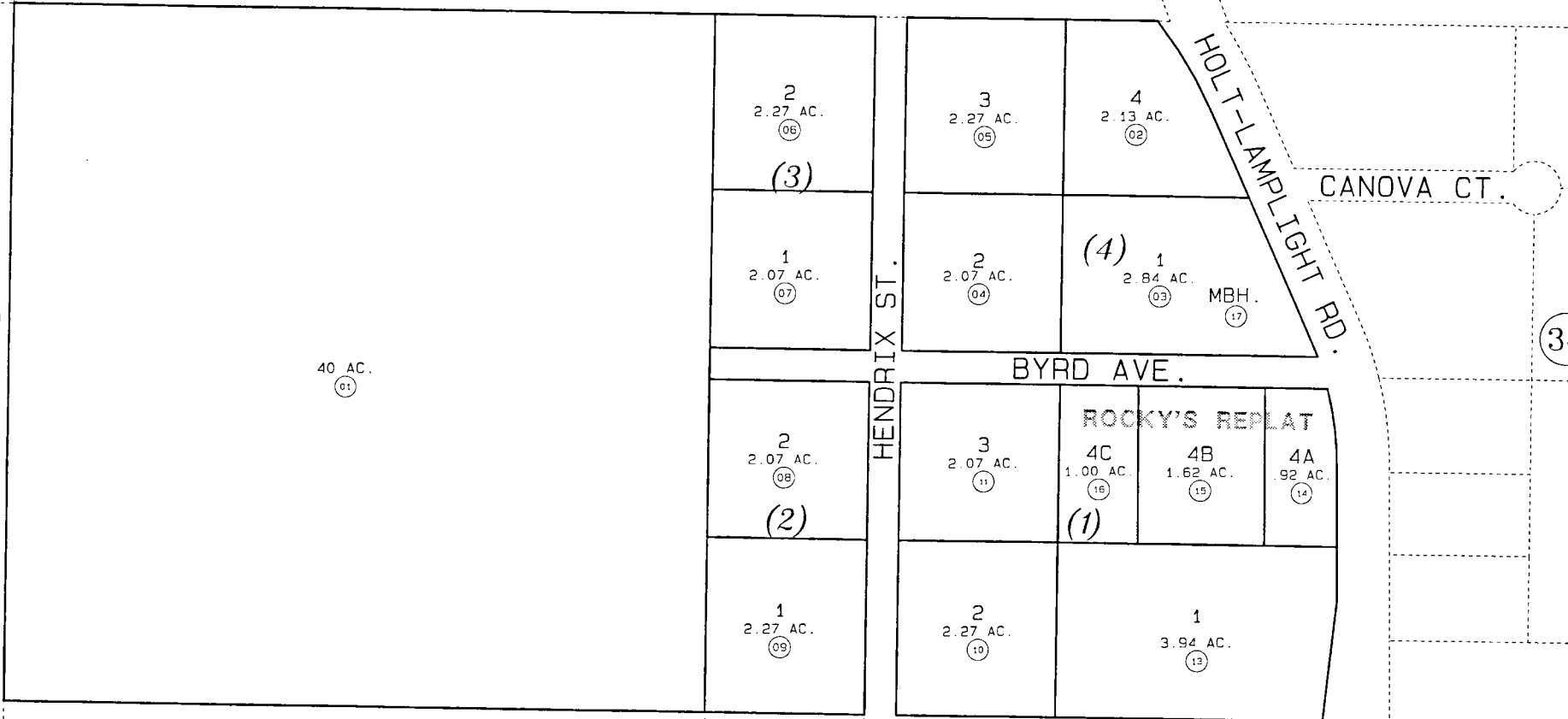
PORTION OF N1/2 SEC. 29, T7N, R11W, SEWARD MERIDIAN

013-380

(12)

(12)

(34)



DATE SEE BELOW

FOR 19 97 ASSESSMENT ROLL		
DELETE	ADD	REVISED
TO		
JAN. 14, 1997	14-16	
OCT. 6, 1997	17	

Assessor's Map  
Kenai Peninsula Borough

BYRD KN770054  
BYRD ROCKY'S REPLAT KN960064

(12)

THIS MAP IS PREPARED FOR KENAI PENINSULA BOROUGH ASSESSING DEPT. USE ONLY AND IS NOT INTENDED FOR ANY OTHER USE OR REPRESENTATION

NOTE - Assessor's Block Numbers Shown In Ellipses  
Assessor's Parcel Numbers Shown In Circles