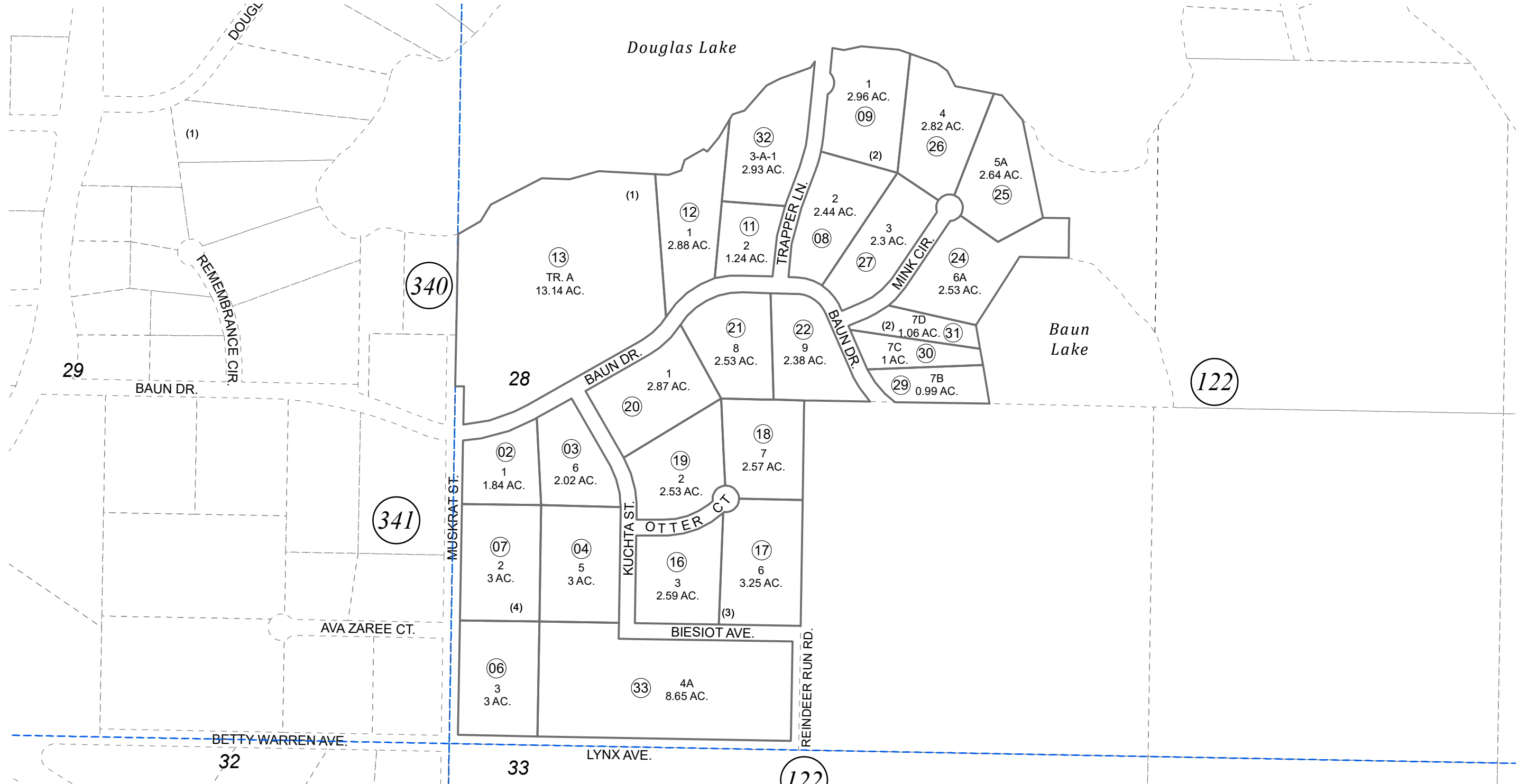


POR. SW1/4, SEC. 28, T07N, R11W, S.M.

013-370



DECEMBER 2, 2021



0 100 200 400 Feet

For 2022 assessment roll		
Delete	Add	Revise
	To	
05,14, 15	33	

Assessor's Map
Kenai Peninsula Borough

KUCHTA ESTATES PART 1 KN0770033
 KUCHTA ESTATES PART 2 KN0770189
 KUCHTA ESTATES PART 2 REPLAT LOTS 5 & 6 BLOCK 2 KN0780028
 KUCHTA ESTATES PART TWO LOTS 7A & 7B BLOCK 2 KN0830131
 KUCHTA ESTATES PART TWO LOTS 7C & 7B BLK 2 KN0870040
 KUCHTA ESTATES PART 1 REPLAT LOT 3A BLOCK 1 KN0940086
 KUCHTA ESTATES HANSEN ADDN KN2021078

This map is prepared for Kenai Peninsula Borough Assessing Dept. use only and is not intended for conveyance nor is it a survey.
 Note- Assessor's block Numbers Shown in Elipses
 Assessor's Parcel Numbers Shown in Circles