

NW1/4 SE1/4 SEC. 17, T07N, R11W, S.M.

101

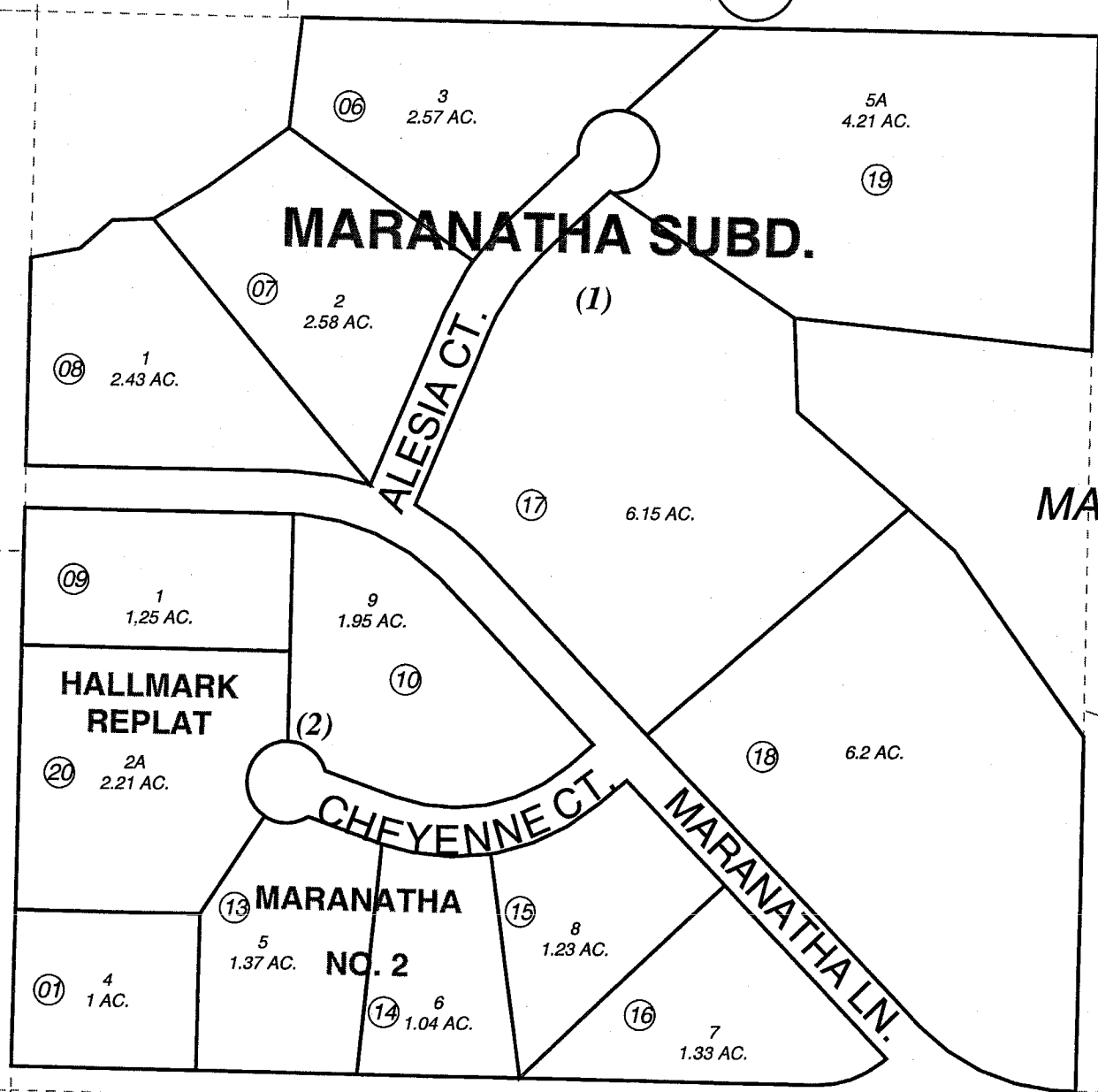
013-660

MARANATHA LN.

700

MARANATHA SUBD.

FOUR SEASONS



MARANATHA LAKE

102

HALLMARK REPLAT

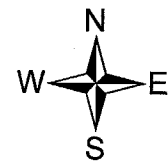
FAVRETTO REPLAT

MARANATHA NO. 2

FOUR SEASONS PT. ONE

PARSON'S AVE.

102



JULY 29, 2004

For 2005 assessment roll

Delete	Add	Revise
	To	
11,12	20	

Assessor's Map
Kenai Peninsula Borough

MARANATHA SUB □ KN0820073
 MARANATHA SUB NO 2 □ KN0820121
 MARANATHA SUB □ KN0930080
 MARANATHA SUBD NO 5 □ KN0950080
 MARANATHA SUB HALLMARK REPLAT □ KN20040033

This map is prepared for Kenai Peninsula Borough Assessing Dept. use only and is not intended for conveyance nor is it a survey.

Note- Assessor's block Numbers Shown in Elipses
 Assessor's Parcel Numbers Shown in Circles