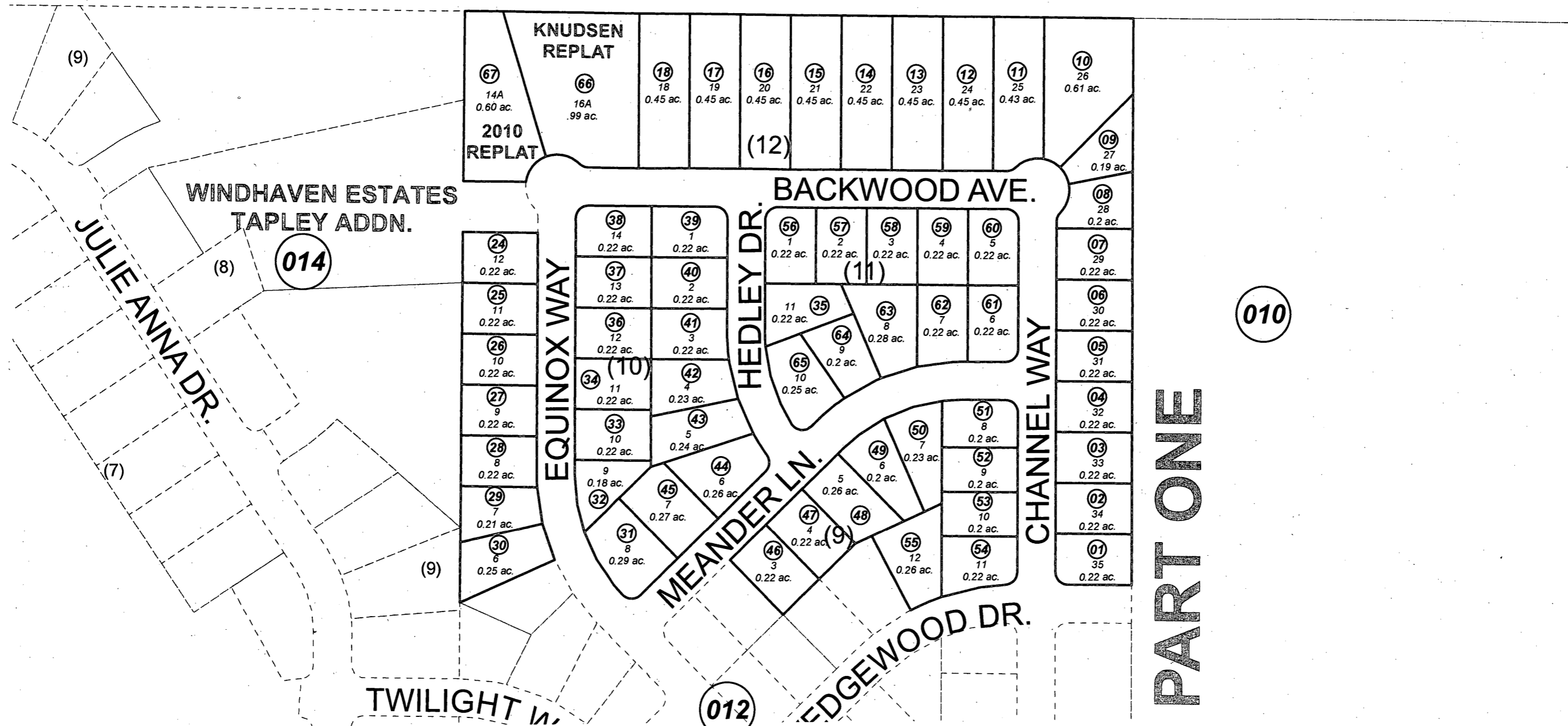


**BK**  
**017**



AUGUST 17, 2012

For 2013 assessment roll		
Delete	Add	Revise
	To	
23		

Assessor's Map  
Kenai Peninsula Borough

INLET WOODS SUB PART ONE KN0840279  
INLET WOODS SUB KNUDSEN REPLAT KN2003025  
INLET WOODS SUB 2010 REPLAT KN2010049

**PART ONE**

This map is prepared for Kenai Peninsula Borough Assessing Dept. use only and is not intended for conveyance nor is it a survey.

Note- Assessor's block Numbers Shown in Ellipses  
Assessor's Parcel Numbers Shown in Circles