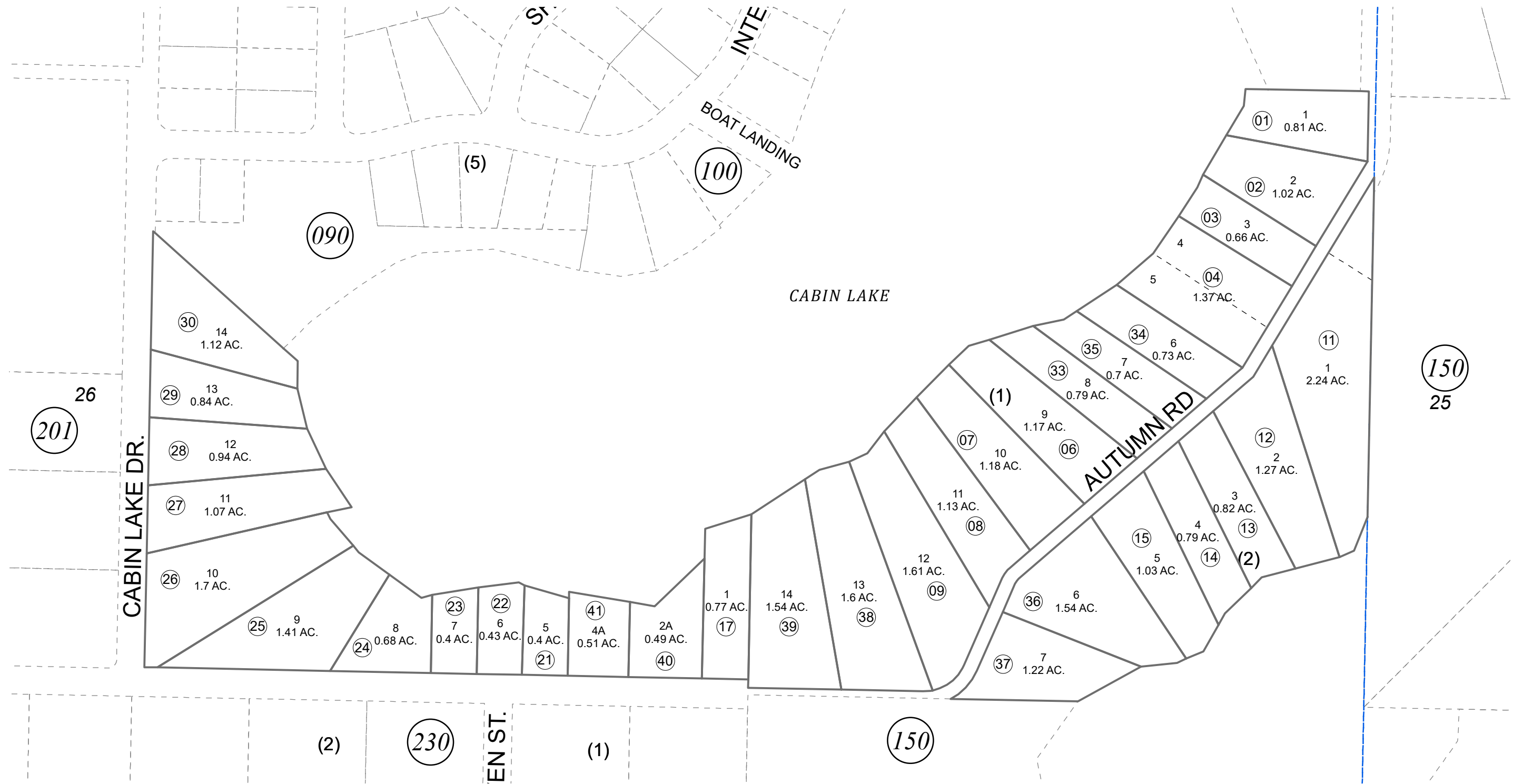


POR. SEC. 26, T07N, R12W, S.M.

015-110



0 50 100 200 Feet

JUNE 29, 2021

For 2022 assessment roll		
Delete	Add	Revise
To		
31	015-090+	

Assessor's Map
Kenai Peninsula Borough

LAKESHORE SUB KN0001429
 BELUGA SHORES SUB (AMENDED) KN0001459
 BELUGA SHORES GEOFFRION ADDN KN0950088
 RECORD OF SURVEY LOTS 11-14 BELUGA SHORES KN0970004

Note- Assessor's block Numbers Shown in Ellipses
 Assessor's Parcel Numbers Shown in Circles

This map is prepared for Kenai Peninsula Borough Assessing Dept. use only and is not intended for conveyance nor is it a survey.