

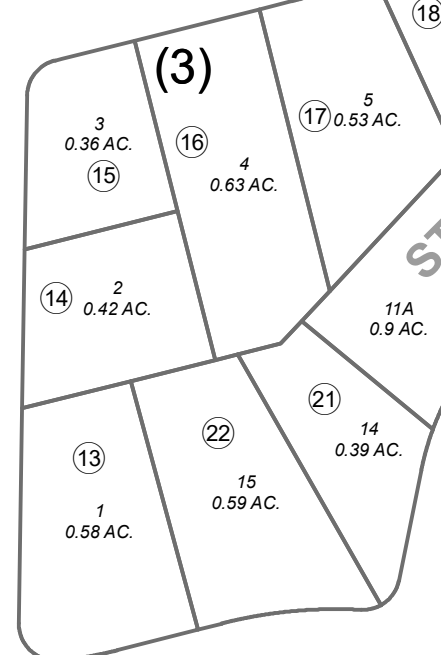
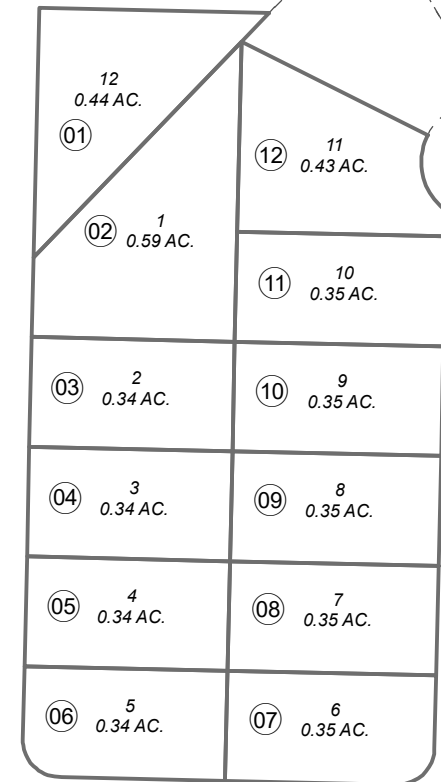
POR. SEC. 26, T07N, R12W, S.M.

015-090

CABIN LAY

070  
BARANC

ADDN.



STANLEY REPLAT

SHELIKOFF ST.

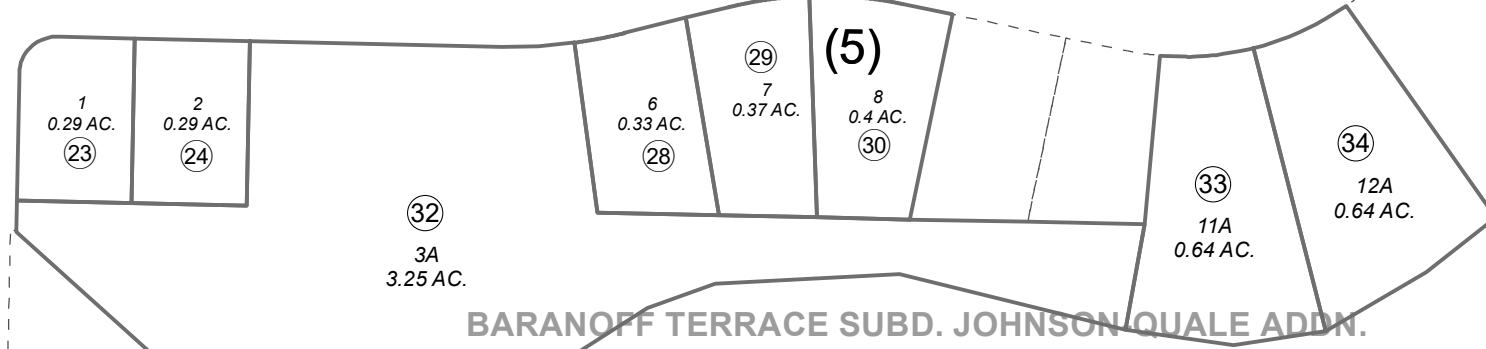
INTERLAKE DR.

BOAT LANDING

150

100

201



BARANOFF TERRACE SUBD. JOHNSON-QUALE ADDN.

110



0 50 100 200 Feet

JUNE 29, 2021

For 2022 assessment roll		
Delete	Add	Revise
	To	
25-27, 10021, 10022, 11031	32-34	

Assessor's Map  
Kenai Peninsula Borough

BARANOFF TERRACE SUB KN0001556  
 BARANOFF TERRACE SUB STANLEY REPLAT KN2010009  
 BARANOFF TERRACE SUB JOHNSON-QUALE ADDN KN2021024

This map is prepared for Kenai Peninsula Borough Assessing Dept. use only and is not intended for conveyance nor is it a survey.  
 Note- Assessor's block Numbers Shown in Elipses  
 Assessor's Parcel Numbers Shown in Circles